

# GIFT SUGGESTIONS FOR MEN, WOMEN AND THE HOME

Dependable lines that will give the fullest amount of satisfaction

## LUXURIOUS GIFT FURS

Of Special Hudson's Bay Quality, Specially Marked—Saving Many Dollars

### HANDSOME PLUSH SETS, MUFF AND TIE

TWO STYLES—One a crushed plush, the other rich, plain black plush; the muff is a novelty pillow-shape with bands of fur and lined with silk; the neckpiece is a pull-through style, with bands of fur to match the muff. Very special value and special style ..... **\$6.95**

LARGE NATURAL LYNX NECKPIECES—Made in animal shape, lined with guaranteed Skinner's Satin, finished with head and paws; very stylish ..... **\$32.50**

LARGE, ROUND, BARREL-SHAPED MUFF—with soft down bed, trimmed with head and paws; value unmatchable ..... **\$32.50**

BEAUTIFUL CAPE EFFECT—in natural wolf, trimmed with heads, tails and paws, and lined with rich silk. Special Value ..... **\$35.00**

MUFF—Made in barrel shape, with head, paws and large brush; right up-to-the-minute style ..... **\$35.00**

### 20 ONLY, BLACK WOLF SETS, PRICED SPECIALLY—\$25.00

THIS IS REALLY extraordinary value; the muff is a large pillow-shape, trimmed with head, paws and large brush, and the neck-piece is made in a very attractive open animal shape, trimmed with head, large brush and silk ties; style and value without equal ..... **\$25.00**

### HANDSOME RED FOX NECKPIECES—HUDSON'S BAY SPECIAL VALUES—\$75.00

MADE UP of the very finest grades of prime red fox skins, extra large, and in that rich, blood-red color only found in the best grades. The shape is a very handsome open animal effect, with head, paws and very rich and large bushes; lined with crepe de chine, value exceptional ..... **\$75.00**

RICH BARREL MUFF—With head, paws and large brush to match, at ..... **\$75.00**



## CHRISTMAS SUGGESTIONS FOR MEN

### INITIAL HANDKERCHIEFS

OF LINEN CAMBRIC—made in Ireland and bought direct; usual size for men, hemstitched and with neatly worked initials; 35c each, or 3 for ..... **\$1.00**

MEN'S INITIAL HANDKERCHIEFS—of fine quality Irish Lawn, with hemstitched border; letters woven in any initial; a wonderful bargain; 20c each or 3 for ... **50c**

### MEN'S NECKWEAR AT 50c

CHOICE of four-in-hand and loose-end style, with slip easy band, in self color ducape, shades of pearl grey, emerald, dark green, navy and royal blue, brown, purple and maroon; exceptional value; each in fancy box ..... **50c**

### MEN'S CHRISTMAS NECKWEAR

THOUSANDS of fancy floral weaves and novelty designs to choose from, in greens, greys, browns, blues and reds, in combination color effects, in loose end four-in-hand; in fancy box; each ..... **50c**

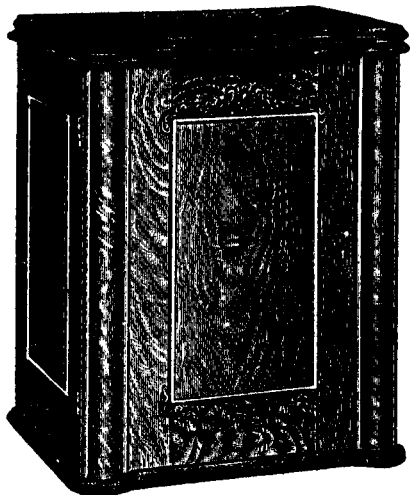
### MENS' GIFT MUFLERS

OF FIBRE SILF in plain colors with fringe ends; colors of black, white, blue, fawn, brown and red; a very useful gift for Christmas. Each ..... **\$1.00**

### MEN'S SWEATER COATS

A SPLENDID Sweater Coat with shawl collar, well made, good fitting, perfect finish, 100 per cent wool, in Oxford, maroon, fawn and pearl grey shades; all sizes; special ..... **\$7.00**

PIM'S and Atkinson's Irish Poplins, in self colors and fancy stripes and spots; also A. T. Reid's all-silk knitted neckwear in Fancy Novelty stripes, and French, English and Swiss imported silks in a large variety, specially bought for Christmas; made in loose end and four-in-hand styles, at, each ..... **\$1, \$1.50, \$2, \$2.50**



Cabinet Machine. Price ..... **\$60.00**

## IMPERIAL ELECTRIC SEWING MACHINES

ONE OF THE HANDIEST machines manufactured. Portable, and can be carried from one room to another. High grade in every respect except price, and without that wearying, tiresome treadle work that drives so many home dressmakers nearly to distraction. They are electric, and the high-grade fixture motor is made by the famous firm of Hamilton Beach. Oh, yes—the motor can be taken off and the machine used as a hand machine if necessary. Price of machine with motor ..... **\$37.50**

### IMPERIAL SEWING MACHINE, MODEL B, \$32.50 EACH

AN UP-TO-DATE MODEL in handsome design, well constructed, full high arm, and makes a double lock stitch; has an automatic drop-head and ash top. An ideal medium priced machine, complete with attachments. Price .. **\$32.50**

### IMPERIAL SEWING MACHINE, MODEL B, DESK CABINET, \$37.50

A HIGH-GRADE DESK CABINET machine at a moderate price; high arm sewing head and automatic bobbin winder; high-grade finish. Price .... **\$37.50**

### IMPERIAL SEWING MACHINE, MODEL A

A HIGH ARM, ball-bearing family sewing machine, up-to-date in every detail. Case is of quartered oak in hand-rubbed finish, with patent chain automatic lifting head, double lock stitch; complete with all attachments Price ..... **\$37.50**

### IMPERIAL ROTARY

A HIGH-GRADE machine at a price within your reach. The Rotary machine is the very latest in sewing machine construction. It is a high speed and automatic tension, and will take the finest lace or the heaviest wool without changing the adjustment. The rotary movement is the most important improvement in sewing machines in the last 25 years—a great saver of time and work. Stand Machine ..... **\$50.00**

**HUDSON'S BAY COMPANY, VANCOUVER, B. C.**