

in this example amounts to less than half a bushel.—By fixing upon two dimensions of a box or bin, the other can be calculated so that the receptacle shall hold any required amount. For example, a bin is wanted to hold 250 bushels of grain. Suppose it to be 8 ft. long and 6 ft. high: what must be the width?  $8 \times 6 = 48$ , this multiplied by 8 = 38—that is one foot of the width of the bin will hold 38.4 bushels, and 250 divided by 38.4 gives 6.5 or  $6\frac{1}{2}$  ft. as the required width. By carrying out the decimals, any required exactness may be attained."

#### WASH FOR BARN.

There is no cheap substitute for oil-paint. All the different kinds of whitewashing are

incapable of shutting out moisture. The sides of buildings especially exposed to rains will lose a portion of any kind of wash by the combined action of frost and moisture. This exception we have made a trial with. A rough barn which received a coating four years ago, now retains most of it, although a considerable portion is scaled off on the most exposed side. This wash is made substantially as follows: one peck of fine beach-sand, three pecks of water-lime, and four quarts of salt. These proportions might vary without detriment—there should be as much sand as can be conveniently applied with a brush. A farm laborer applied this mixture early last summer to two rough barns, one about 30 by

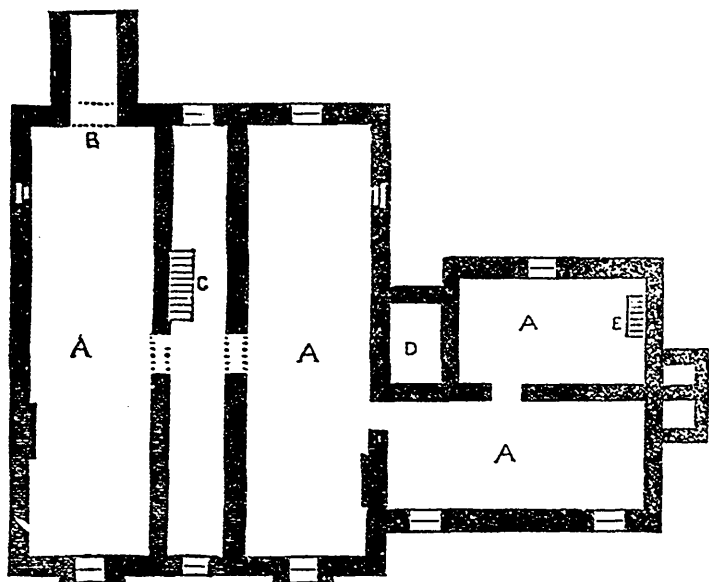


Figure No. 1.—Plan of the Cellar.

55 feet, the other 20 by 30, in three and a half days consuming two bushels of water lime, which was nearly the whole cost of material. This coating, now nearly one

year's standing, appears to be as good as the day it was put on. It will be perceived that the expense will only be about one-tenth the cost of a coat of paint.—*C. Gent.*

## HORTICULTURAL DEPARTMENT.

### WHEN TO PLANT FRUIT TREES—FALL OR SPRING.

THE Fruit Growers' Association addressed this inquiry to every Horticultural and Agricultural society in Upper Canada, besides sending it to many gentlemen interested in the

culture of fruit. About fifty replies were received, and the committee charged with the preparation of the report, state that not more than one-fourth of them were in favor of fall planting; a few expressed the opinion that the time *when* is not of as much importance as the manner *how*. A letter