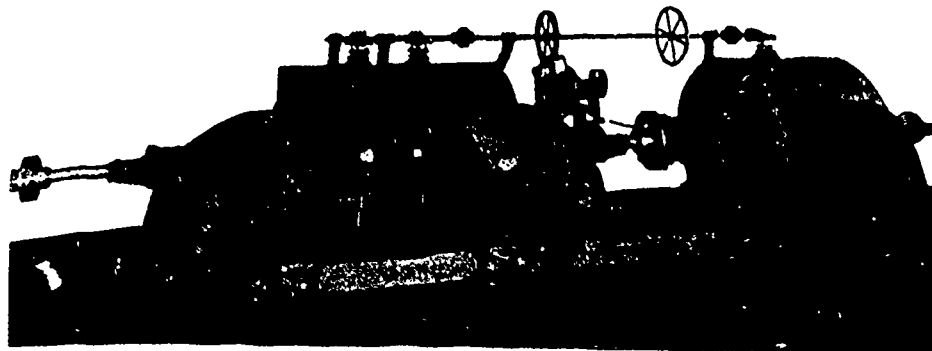


# The McCormick Turbine © All Sizes Tested at Holyoke.....



This Engraving represents three 21 inch Turbines, operating under 64 head, in the Plant of Chas T. Westcott, Baltimore, Md

©

Enormous Power and Higher Efficiency than is obtained from any other make.

Hundreds Driving Electrical Machinery.

Write for Catalogue.

©

S. MORGAN SMITH CO. - YORK, PA.

**TENDERS WANTED**

A Weekly Journal of advance information and public works. The recognized medium for advertisements for Tenders.

**CANADIAN CONTRACT RECORD**  
TORONTO.

TENDERS WANTED

## The National Tube Works Company

The Largest Makers of All Sizes and Kinds of

**Special Wrought Mild Steel and Best Wrought Iron Tubular Goods in the World.**

Control the Manufacture of

**Wrought Tubular Goods,**

—Made of a High Class of Mild Steel from the Ore to the Finished Product—and Unqualifiedly Recommend NATIONAL STEEL PIPE for all uses as Better than any Iron Pipe made.

McKEESPORT, PA.

# GEORGE WHITE-FRASER

MEM. CAN. SOC. C. E. MEM. AM. INST. ELEC. ENG.

## Consulting and Constructing Electrical Engineer

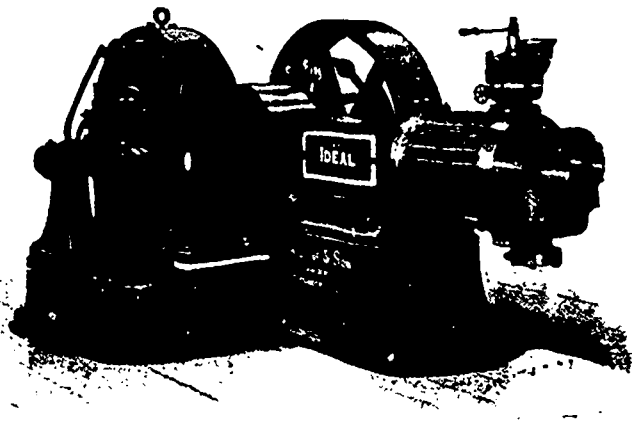
PLANTS RECENTLY INSTALLED: Goderich, Stratford, Clinton, Collingwood, Chatham, N. B.; Fraserville, P. Q.; Windsor Mills, P. Q.; &c., &c.

SPECIFICATIONS, PLANS, TESTS AND SUPERVISION

# THE Goldie & McCulloch Co. LIMITED

MANUFACTURERS OF

**IMPROVED STEAM ENGINES AND BOILERS**



THE "IDEAL" HIGH SPEED ENGINE, DIRECT-CONNECTED.

Flouring Mills, And the Erection of Same in the Most Complete Style of Modern Improvement.

Wool Machinery, Wood-Working Machinery, Saw Mill, Shingle and Stave Machinery, Fire and Burglar-Proof Safes and Vault Doors.

SPECIAL ATTENTION called to the "WHEELLOCK" IMPROVED STEAM ENGINE, also the "IDEAL" HIGH SPEED ENGINE, cut of which appears above, as being Unequaled for Simplicity, Efficiency and Economy in Working, and Especially Adapted for Electric Lighting, Street Railways, Etc.

† GALT, ONT.