

# Your Last Chance

To purchase the following List of Groceries at the rock bottom price of **\$9.80**

|  | Our Retailer's Price | Price  |                                | Our Retailer's Price | Price |
|--|----------------------|--------|--------------------------------|----------------------|-------|
| 20 lbs. Redpath Granulated Sugar               | \$ 50                | \$1 25 | 1 lb. Soluble Cocoa            | 30                   | 70    |
| 5 lbs. Black or Green Tea                      | 1 50                 | 2 50   | 5 lbs. Best Cheese             | 50                   | 1 00  |
| 2 lbs. Mocha and Java Coffee                   | 60                   | 1 00   | 10 lbs. White Beans            | 50                   | 70    |
| Two 2 1/2 oz. bottle Vanilla and Lemon Extract | 35                   | 50     | 2 Cotton Clothes Lines, 45 ft. | 25                   | 40    |
| 20 lbs. Rice                                   | 1 00                 | 1 40   | 1 Scrub Brush                  | 20                   | 25    |
| 10 lbs. Tapioca                                | 60                   | 80     | 1 lb. Mixed Candies, FREE      |                      |       |
| 1 lb. Black Pepper                             | 25                   | 40     |                                |                      |       |
| 1 lb. Cinnamon                                 | 22                   | 40     |                                |                      |       |
| 2 lbs. Shredded Coconut                        | 35                   | 60     |                                |                      |       |
| 5 lbs. Pure Baking Powder in 1-lb. tins.       | 50                   | 75     |                                |                      |       |
| 6 Jelly Powders                                | 40                   | 50     |                                |                      |       |
| 5-lb. Tin A. D. S. Jam, any kind               | 60                   | 80     |                                |                      |       |
| 1 lb. Mustard, Coleman, bulk                   | 30                   | 45     |                                |                      |       |
| 10 lb. pot Barley                              | 40                   | 70     |                                |                      |       |
| 5 lbs. New Orleans Molasses                    | 18                   | 25     |                                |                      |       |

### SOME REAL SNAPS

|  |        |
|--|--------|
| Lombard Plum, 2-lb. tins, per case of 2 doz. | \$1 90 |
| Raisins, Seeded, 16 oz. pkt., per doz.       | 85     |
| Apples, 2 1/2-gal. tin, per case of six      | 1 35   |
| Prunes, 70-80 per 25-lb. box                 | 1 75   |
| Peaches, 25-lb. box                          | 1 95   |

## DUNGAN & HUNTER

MAIL ORDER GROCERS

519 LOGAN AVE.

WINNIPEG, Man.

### WORLD'S FAIR BURNED

A Brussels cable of August 15 said: "The white city of the world's fair, as the Belgians have called their 1910 exhibition is tonight a mass of flames and smouldering ruins. A spark falling into inflammable material in the telegraph building burst into flames which, driven by a high wind, swept rapidly in all directions. Soon the Belgian, English and French sections were destroyed. Firemen and detachments of soldiers found themselves baffled by the gale, which carried the burning embers to all parts of the grounds.

### Kermesse Afire

"To the left of the main building arose the picturesque roofs and spires of Bruxelles Kermesse, a Belgian Coney Island, with water chutes, toboggan slides and scores of side shows. This place was alive with Sunday crowds, and before they could be got out with any semblance of order, the Kermesse was afire. The crowds became panic stricken and men, women and children fought madly to escape. The exits became choked with the struggling masses and men used their fists to clear the pathway. Many were trampled under foot and badly injured.

### Forty Houses Destroyed

"An engine corps from Antwerp attempted to dynamite the bridge of the French section, in the hope of checking the fire, but the flames leaped across and engulfed the Italian, Russian, Austrian, Japanese, Chinese and Norwegian buildings. Forty houses on the avenue Solbosch adjoining the exhibition were destroyed.

"At the time of the outbreak not less than 100,000 persons were circulating in the grounds and the Kermesse. Troops were ordered out and came at double quick to aid the police in clearing the grounds. This was accomplished in fair order, except within the limits of the Kermesse. Considering the rapidity of the conflagration the small loss of life is mar-

velous. So far as is known up to a late hour tonight only two are dead. The injured, as officially announced, number 30, but probably many hundreds received minor hurts.

"As the flames reached the menagerie it was decided to shoot the beasts, but the heat drove the soldiers back, and the animals were left to their fate. The multitude of people were driven back to a safe distance and watched the destruction of the white city.

### Rich Treasures Burned

"Many jewel exhibitors were uninsured. In the French art section priceless gobelins, paintings and sculptures were ruined, as were rich treasures in the British, Belgian, Persian and Turkish sections. All the archives were burned, and it will therefore be impossible to confer medals and diplomas.

"The fire was due to a short circuit. In addition to the panic that prevailed in the Kermesse, there were several other minor panics at other points within the grounds, and women and children were crushed in the rush. Some wild animals escaped from their cages and added terror to the scene. It is believed several of them are still at large.

"The fire was finally got under control. The Belgian and British sections are in ruins, while all the other sections, including American, were partly destroyed.

"Bands of thieves engaged in pillage, and a soldier was stabbed while attempting to arrest three men whom he found rifling the jewelry exhibit. The loss is estimated at \$100,000,000. Diamond exhibit owners are heavy sufferers."

\*\*\*

### LLOYDMINSTER FAIR

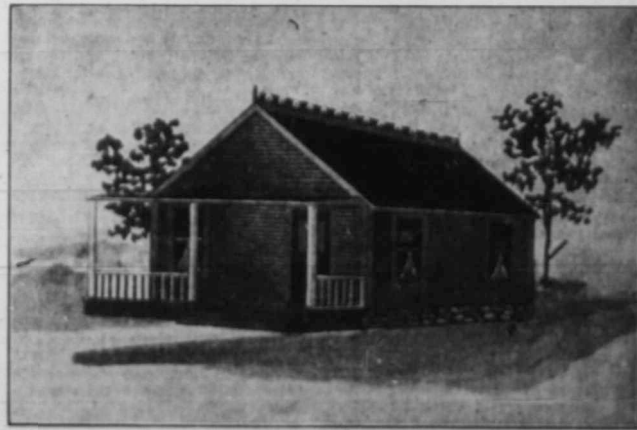
A Lloydminster wire of August 14 said: "The Lloydminster Agricultural Society's sixth annual exhibition this week was a very successful affair. The attendance from all points was good and some first-class stock was exhibited. A noticeable feature of this show was the marked improvement in the heavy type of horse shown as compared with earlier years. The Clydesdale stallion Gowanlock, winning first prize, is a magnificent animal, and is half brother to the stallion which captured first prize this year at the royal show in the old country. All the heavy horses exhibited were of particularly good stamp, with plenty of bone and good action. Some exceptionally fine roadsters and saddle horses were exhibited, the quality of this class testifying to the prosperity of the local farmers who own them. Cattle made a good showing, Shorthorns, Herefords and Polled Angus being well represented.

"Another marked feature of this year's show was the large number of high-class hogs and sheep put before the judges. The dry season accounts for the small exhibits in grain, vegetables and fruit, but as regards stock the show was an unprecedented success."

# Did You See our Houses at the Fair?

And notice how warm and simple were our

## WEIR MADE COTTAGES



4 Rooms 18 x 24 \$394.00

Mr. Farmer you have to build a new house this fall. Why not order a Weir Ready-made House and save time and money? Built absolutely wind proof and cold proof, simple, substantial and economical. The cheapest and warmest houses on market. Send for FREE Catalogue showing twelve different designs.

## WM. S. KING CO.

Selling Agents 228 Portage Avenue, Winnipeg

# Grain Growers

Don't forget at the next meeting of your local Association to bring up the question of carrying a card in the columns of The Guide similar to that carried by the Swan River Association. We have pointed out the advantages which will accrue both to your own local Association as well as to the Grain Growers' movement as a whole. We think you agree with us that it would be a splendid move.

Its success, however, depends on its being taken up generally, so that we will have a Directory of a page or more of these Cards.

Don't fail therefore to bring the question up at your next meeting, and authorize your Secretary to send us instructions for the insertion of YOUR Card.

Remember the special rate only \$16.00 per year for a four line card.

THE GRAIN GROWERS' GUIDE :: Winnipeg

## Send for a Pair Today!



Delay means you will lose your chance to get a pair of these economical, long-wearing British-made shoes. Cost only

Prepaid to your Post Office. **\$3.35**

Size 11 1/2 to 11 3/4

This light farming shoe, as shown in illustration, is solid leather throughout, waterproof, genuine, and for 1

steps. Send for a pair today, and for our illustrated catalogue of British-made shoes FREE. Dealers write for our profit-giving offer to Agents. These shoes cannot be equalled in Canada for the money.

SCOTTISH WHOLESALE SPECIALTY CO. 184 PRINCESS ST. WINNIPEG, MAN.