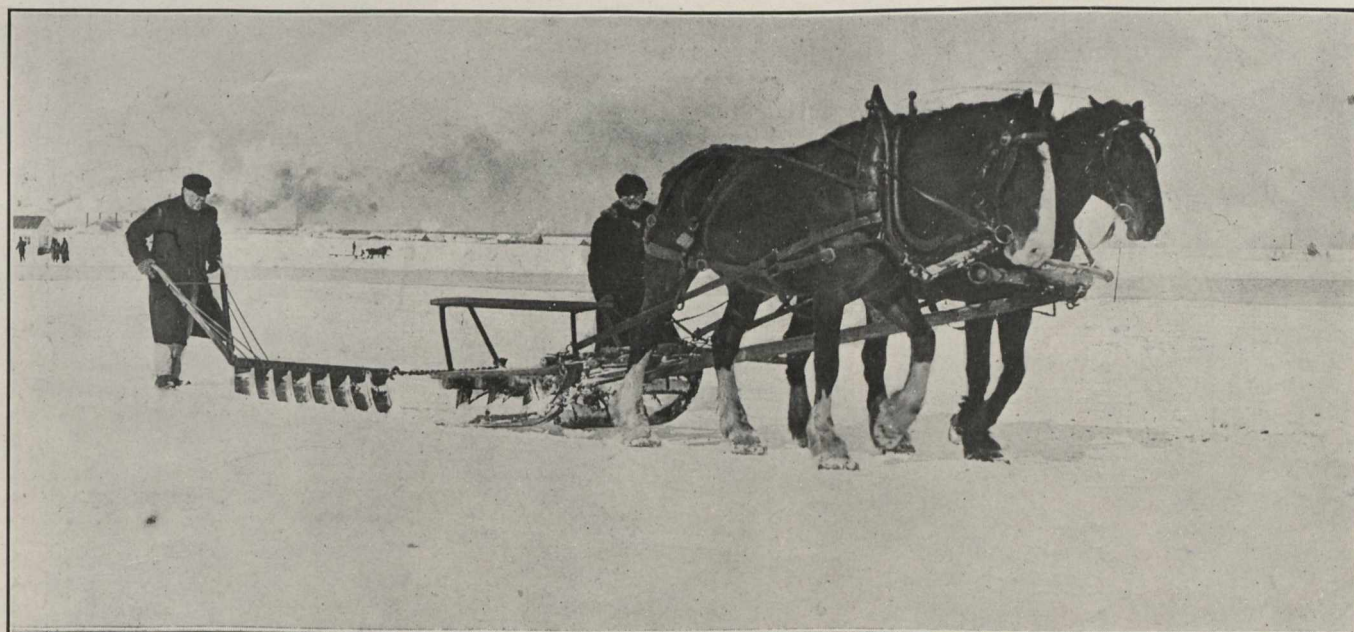


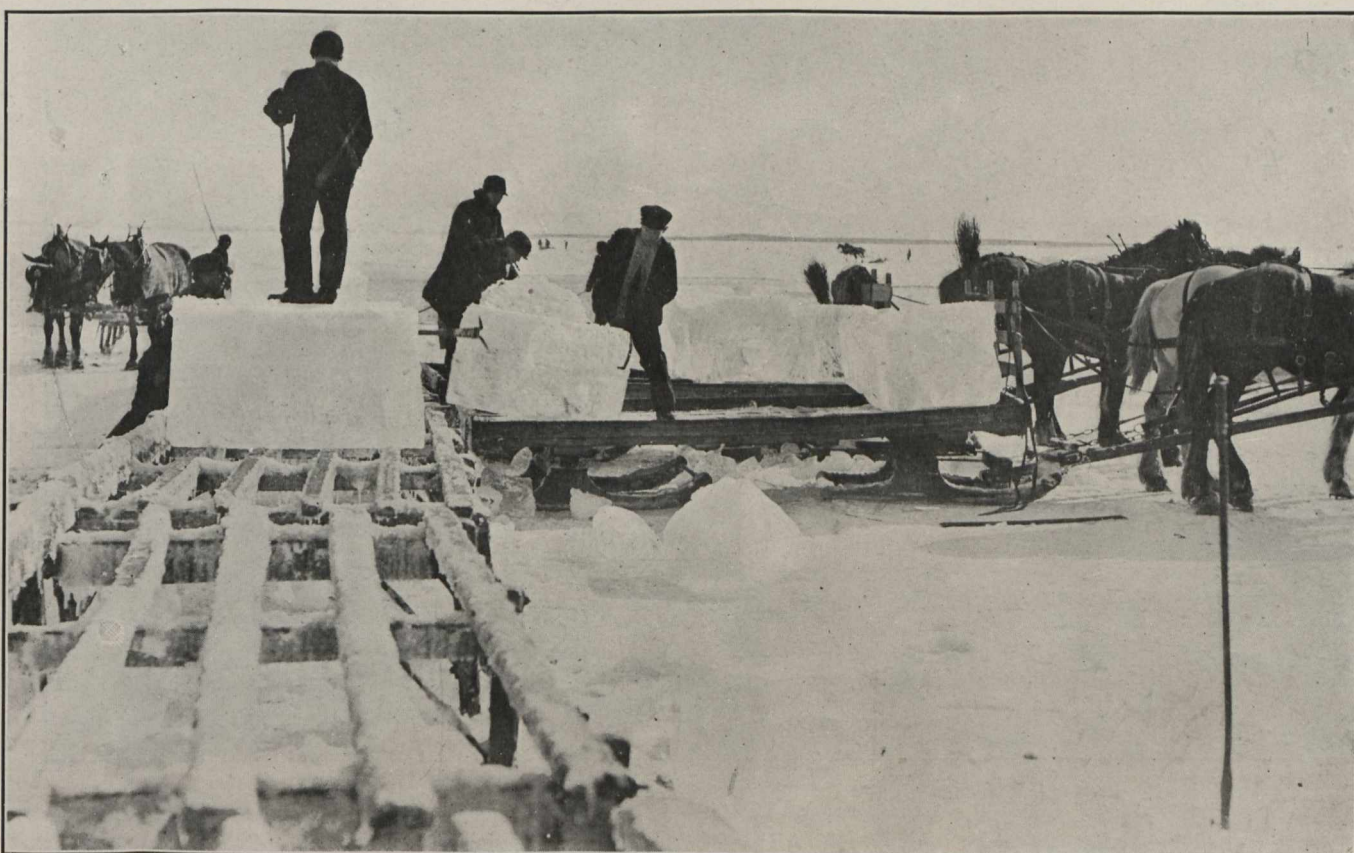
Harvesting Ice for the Palace

A great deal of difficulty has been experienced this season in getting ice of sufficient thickness to be used for building purposes. An ice field in the St. Lawrence is here illustrated. In the distance is seen the Victoria Bridge, across which there is railway, street car, and ordinary vehicular traffic. It is nearly two miles in length. The machine is scraping the snow off before the ice is cut.



Laying Out the Field

A sort of plough is used to mark off the huge squares, which are then sawed up into suitable sizes for handling.



Transporting the Blocks

Twenty thousand such blocks as these, each 48 inches long, 22 inches wide, and 28 inches thick have been used in the construction of the Ice Palace, the total weight of which is about four thousand tons.

—Photos by Gleason.