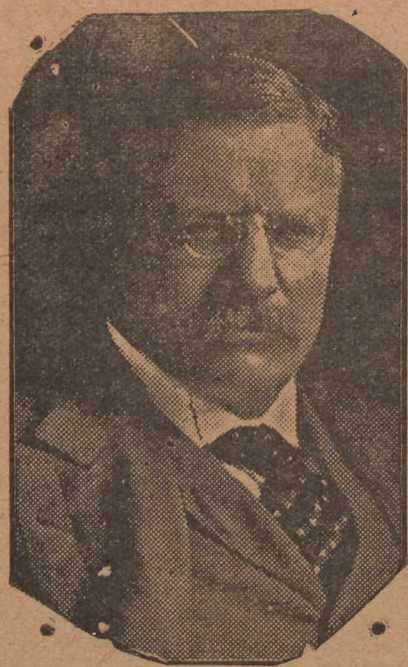


# Mentioned in Despatches



**THEODORE ROOSEVELT,**  
Ex-President of the United States, who died on  
January 6, 1919.

**COLONEL THEODORE ROOSEVELT**, who died a few days ago, was President of the United States for two terms. On the first occasion he succeeded the late William McKinley when that individual was assassinated. The ex-President was born in New York City in 1858, and educated at Harvard. In turn he was a member of the New York Legislature, head of the New York Police Board, assistant secretary of the Navy, organized the Rough Riders in the Spanish American War, and later was elected Governor of New York State. In 1900 he was elected to the Vice-Presidency of the United States, became President a year later, and was re-elected in 1904. He was defeated for the Presidency some years ago in a three-cornered fight between Wilson, Taft and himself. Roosevelt was the great apostle of the strenuous life, and as a rancher, a rough rider, writer and speaker, made a deep impression on his fellow Americans. He was the author of a number of books, was a frequent contributor to newspapers, magazines and in brief was the most prominent and biggest American of his generation. During late years he made his home at Oyster Bay. In the recent war he had four sons at the front, the youngest being killed in action and two others wounded.

**BENJAMIN TOOKE**, president of Tooke Brothers, Limited, who died on Sunday, was born in this city 71 years ago. In company with his brother, R. J. Tooke, he founded the firm of Tooke Brothers, and on his brother's retirement many years ago continued the business alone. He was also a director of the Spanish River Pulp & Paper Company, and of a number of other corporations. The late Mr. Tooke was a prominent Mason, and an enthusiastic golfer, founding and being the first president of the Beaconsfield Golf Club.

**CHARLES WYNDHAM**, the actor, who died in London on Sunday was born in Liverpool in 1837. He was the son of a prominent physician. Intended for the church he took to the stage after obtaining his degrees in medicine. He made his first appearance in 1862. He later went to America and took part in the war as a surgeon with the Confederate army. For twenty years he successfully managed the Criterion Theatre in London and he was also proprietor of Wyndham's Theatre and the New Theatre, which produced one success after another. The late King Edward bestowed knighthood upon him at the time of the coronation in 1902.

**GEORGE McLAREN BROWN**, European manager of the Canadian Pacific Railway, is now Sir George. He was given a K.C.O.V.E., in the New Year's lists. Sir George Brown was born in Hamilton in 1865, and has spent his entire business life in the transportation business. For some years he was stationed in Montreal, but was sent to England in 1910.

**COUNT VON HERTLING**, who died a few days ago, was the Imperial German Chancellor for upwards of a year during the war. He was appointed in October, 1917, and resigned a few weeks before the armistice was signed. Von Hertling was born in Bavaria in 1843, and had been a member of the Reichstag for upwards of a third of a century. He became head of the Clerical party in 1909. Von Hertling was known throughout Germany as a scholar and a writer as well as for his political attainments.

**MR. GUSTAVE FRANCO**, of Montreal, sailed Jan. 12th as a delegate to a pre-peace labor conference slated for Lauzanne, Switzerland, next week. Mr. Franco is one of two delegates chosen by the Trades and Labor Congress of Canada for this inter-allied conference. The other delegates is **MR. P. M. DRAPER**, familiarly known in Ottawa as "Paddy," who is secretary of the Trades & Labor Congress of Canada and who accompanied Sir Robert Borden on his mis-

sion to the peace conference, being at present in Europe, where he will join Mr. Franco.

Franco is a jovial hale fellow well met; is rosy, fat and happy—perhaps forty, too—and hosts of friends and others know him as "Gus." He is a Belgian and a year ago stood alone for conscription at the annual convention in Ottawa of the Trades and Labor Congress of Canada. For this he suffered a slight reprimand from the union for which he was a delegate and latterly was deposed from the post of secretary of the Montreal Trades and Labor Congress. All this was soon forgiven, because of Franco's remarkable strength in the labor movement, and even his own Typo-Union urged him to again become their delegate at the council. This he did.

In the latest list of five Victoria Crosses awarded to Canadians, there is a wide diversity in the nationality and occupations of the recipients of the honor.

**CAPT. JOHN MacGREGOR, V.C., M.C., D.C.M.**, enlisted as a private in the Second Mounted Rifles, and won his commission on the field; he is a carpenter by trade, and his birthplace was in Scotland. **LIEUT. GEORGE FRASER KERR**, was born at Deseronto, Ontario, and is a chemist by profession. **LIEUT. MILTON F. GREGG** enlisted as a private and won his commission on the field; he was born in Scotland, and was a school teacher by profession. **LIEUT. SAMUEL L. HONEY** was born at Conn, Ontario, and won his commission on the field; he was also a school master by profession. **SERGT. WILLIAM MERRIFIELD** was born in England. He was farming in Ontario prior to the outbreak of hostilities.

## WEEK'S RECORD OF ACTIVE MONTREAL STOCKS.

Sales.	Open.	High.	Low.	Last sale	Net ch'ge.	— 1918 —	High	Low.
205 Ames-Holden ...	27	28	27	27	+1	28	15	
590 Do. pfd. ...	69½	71½	69½	70½	+ ½	72½	47	
121 Asbestos ...	*46½	*46½	*46½	*46½	unch.	45¾	15	
190 Brazilian ...	52¾	52¾	52½	52½	— ¾	60	32	
182 Brompton ...	61	61	60¾	60¾	+ ¾	63¼	41¾	
355 Can. Car ...	31¼	31½	30	30	—1½	38¼	18½	
396 Do. pfd. ...	85	85¾	84¾	84¾	— ¼	92	49½	
322 Can. Cement ...	*65	*65½	*65	*65	unch.	69½	*57	
113 Can. Forgings ...	192	192	192	192	—2	213	150	
575 Can. Steamship ...	45¾	45¾	45	45¼	— ½	50¾	39¼	
299 Do. pfd. ...	78¾	78¾	78½	78½	— ¼	80¼	76	
14,312 Con. Smelters ...	25	27¼	25	26¼	+1¼	26	25	
963 Dom. Steel ...	62	62½	62	62	unch.	65	*53	
1,339 Laurentide ...	197	197	192	195	—2	*198	152	
410 Maple Leaf ...	*133½	*133¾	*133¼	*133½	unch.	140	94	
1,275 Mont. Power ...	87¾	88	87½	87½	— ¼	88½	68½	
225 Nat. Breweries pfd. ...	53	53	53	53	+3	50	50	
95 Ogilvie ...	215	224¾	215	224¾	+4¾	*210	146	
150 Shawinigan ...	115¼	115¼	114½	114½	— ½	118¼	*107	
415 St. Lawrence Flour ...	95	95	94½	95	unch.	96¾	50	
1,315 Steel of Canada ...	65¼	65½	62½	62½	—2¾	74¼	*49¾	
100 Sherwin-Williams pfd. ...	99	99	99	99	unch.	99	99	
355 Wayagamack ...	54	55	51	52	—1¾	55	50	

### BANKS

104 Commerce ...	206½	214	206½	214	+13	201	185
72 Royal ...	214	214	214	214	unch.	214	208

### BONDS

\$120,700 Can. Loan (1937) ...	96½	97½	96½	97	+ ¼	97¾	91½
137,150 Victory (1922) ..	98½	98¾	98½	98¾	+ ¼	99½	98
21,550 Do. (1927) ...	100½	100½	100	100	— ½	101¼	100½
128,650 Do. (1937) ...	102¼	102½	102	102	— ¾	102¾	101¾
26,200 Wayagamack ...	81	81½	81	81½	+ ½	81	75

### UNLISTED SHARES.

187 Laurentide Power ...	61½	61½	60¾	60¾	— ¾	62	50
110 N. A. Pulp ...	2½	2½	2½	2½	— ½	4¾	2½

\*—Ex-dividend.