



Big Fortunes Are Being Made In Minnesota Iron Lands

Yes. Not only big fortunes but little ones. The smaller people are getting a "show" at the great profits. Farmers, merchants, and others who have money in the iron-bearing lands of Crow Wing County, Minnesota, are getting profits in cash that exceed their fondest hopes. These iron-bearing lands are money makers for those who take out ore. They are situated in the Cuyuna Iron Range which lies along the Northern Pacific Railroad between Deerwood and Brainerd.

End of Ore In Some Old Sections

Although \$1,500,000 in dividends were distributed this year to the stockholders of only one company in Northern Minnesota, still the indications are that the iron-ore in older sections is getting scarcer and scarcer every year. New mines will have to be opened in greater numbers than before in other sections.

Your Opportunity—Our Proposition

This then is your opportunity. Many consider it the chance of a lifetime. We control a quantity of iron-bearing land in Township 46, Range 20, Crow Wing County, Minnesota. It is but 3/4 miles from Deerwood, a town on the

Northern Pacific Railroad between Duluth and Brainerd.

A Rich Strike Nearby

A short distance North of this property a prominent ore company has sunk a shaft and is now mining. In every direction drills have disclosed valuable finds of iron ore. Within 80 rods of this land drills have blocked out forty million tons of iron ore. The above ore company referred to has offered to supply us with money and take half the profits. We prefer, however, to develop it ourselves and divide the profits among those who invest with us in this valuable land. Consequently, we believe it will be an excellent opportunity for you to receive good dividends on your investment.

We are an organized corporation, capital \$500,000. The price per share is \$10.00 each. Our prospectus and other literature give full description of the property with pictures, guarantees, references, map, and everything that it is possible to put on paper which reflects an honest, straight-forward and reliable investment.

A visit to these lands will well repay you. Send for above prospectus quick, and ask us any questions if you feel inclined to. We will give you an honest, straight-forward answer.

IRON PRODUCING LANDS CO.,
822 Bank of Commerce Bldg., Minneapolis, Minn.

PURE BRED LIVE STOCK EASILY SECURED

Would you like to secure some pure bred live stock for just a little work in your spare time? The stock is pure bred and eligible for registration. It is not for sale but is given as premiums for New Subscriptions to **The Canadian Dairyman and Farming World**. Read Our Offer:

PURE BRED PIGS

We will give a Pure Bred Berkshire, Yorkshire, or Tamworth Pig, of either sex, and from six to eight weeks old, for **Only Seven New Subscriptions** to **The Canadian Dairyman and Farming World** at \$1.00 each. Animals are Pure Bred, with Pedigree, eligible for registration. They will be delivered now or next fall, whichever you prefer.

PURE BRED CALVES

We will give a Pure Bred Ayrshire or Jersey Bull or Heifer Calf, or a Holstein Bull Calf, for only **Thirty New Subscriptions** to **The Canadian Dairyman and Farming World** at \$1.00 each.

We will give a Pure Bred Holstein Heifer Calf for **Forty-Five New Subscriptions** to **The Canadian Dairyman and Farming World** at \$1.00 each.

If you would prefer Cash Premiums write for particulars regarding our

SPECIAL \$1,500 OFFER

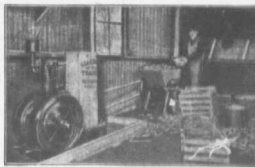
We will give **\$1,500 for 1,000 New Subscriptions** to **The Canadian Dairyman and Farming World** at \$1.00 a year. Cash Prizes offered for any number of **New Subscriptions** from 1,000 down to 50 or less. **Prizes are not simply to one, but to all.** Further particulars furnished on application.

A Post Card will bring Sample Copies and All Necessary Outfit to Canvass for Subscriptions. WRITE TO-DAY.

THE CANADIAN DAIRYMAN AND FARMING WORLD
PETERBORO, ONT.

It is desirable to mention the name of this publication when writing to advertisers.

EVERY FARMER NEEDS A FAIRBANKS-MORSE JACK-OF-ALL-TRADES ENGINE



They will Pump Water, Thresh, Grind Feed, Turn Separator, Churn, and make life easier.

OUR CATALOGUE WILL TELL YOU all about this Labor saver. Sent Free.

FAIRBANKS' STANDARD SCALES

The Canadian Fairbanks Co.

LIMITED

Montreal, Toronto, St. John, Winnipeg, Calgary, Vancouver

The SUCCESS MANURE SPREADER



OLDEST
NICEST WORKING
BEST WORK
LIGHTEST DRAFT
MOST DURABLE

The "Success" has the largest rear axle and strongest drive-chain of any spreader made. It is the only machine with heater freemoving and many other points covered by strong patents. Our catalogue tells all about it and gives most valuable information for farmers. Write for it.

MANUFACTURED BY

The Paris Plow Co., Limited.
WESTERN BRANCH: WINNIPEG, MAN. PARIS, ONTARIO.

The Maple Leaf Gold Sheaf Harvest Tools



These tools are tempered by the same process used in the tempering of the famous Maple Leaf Saws. They are the best goods of the kind ever offered to the Canadian public. Every tool is warranted. Handles made of best second-growth white ash. It pays to see the best. If your merchant has not got them, send to the

Maple Leaf Harvest Tool Co., Ltd., Tillsonburg, Ont.

who are the manufacturers. None genuine that do not have the Gold Sheaf on the label
J. C. DREIERICH, President.
C. J. SHURLY, Vice-president.
F. D. PALMER, Treasurer.
C. K. JANNEN, Secretary