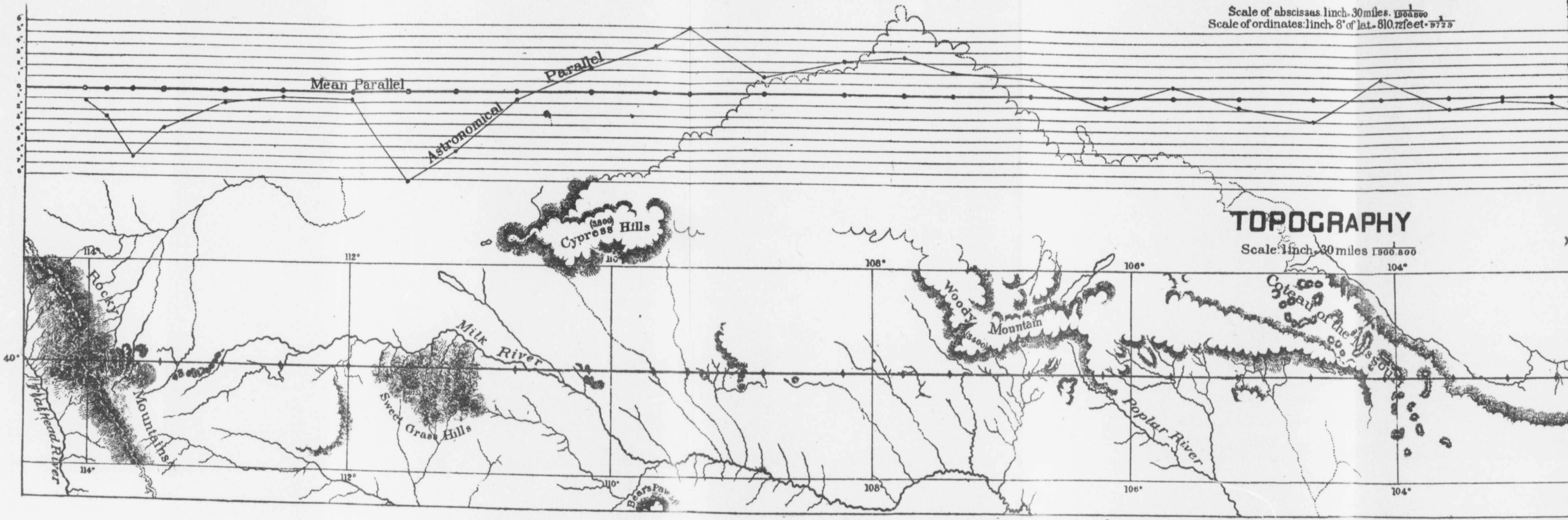
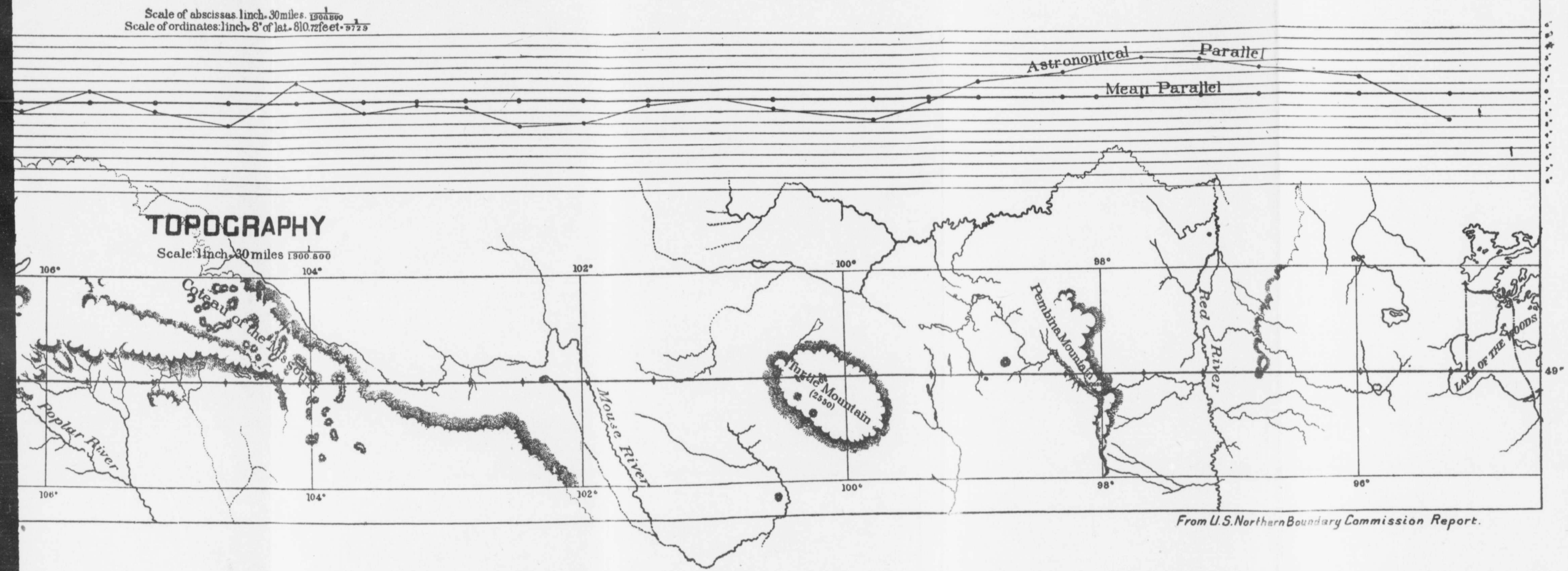


Scale of abscissas: 1 inch = 30 miles $\frac{1}{300000}$
Scale of ordinates: 1 inch = 8' of lat. $\frac{1}{800000}$



Scale of abscissas: 1 inch = 30 miles $\frac{1}{300000}$
Scale of ordinates: 1 inch = 8' of lat. $\frac{1}{800000}$



From U.S. Northern Boundary Commission Report.