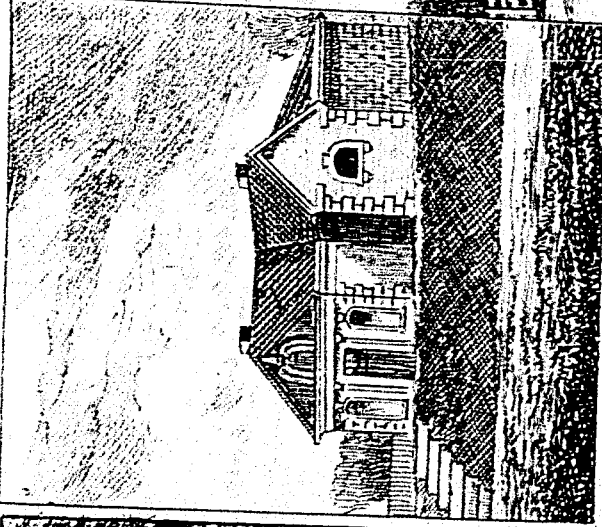
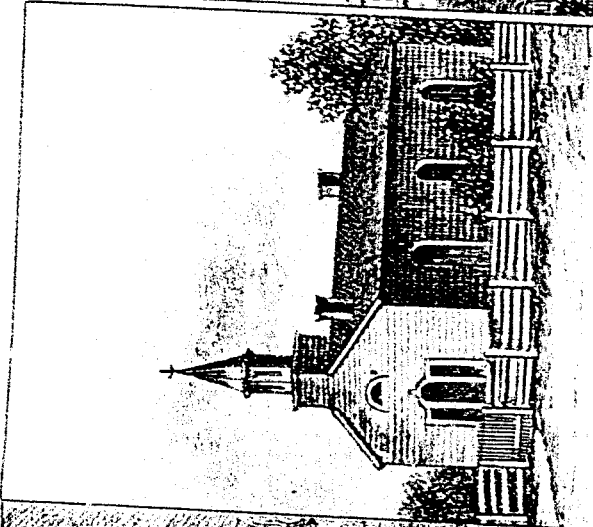




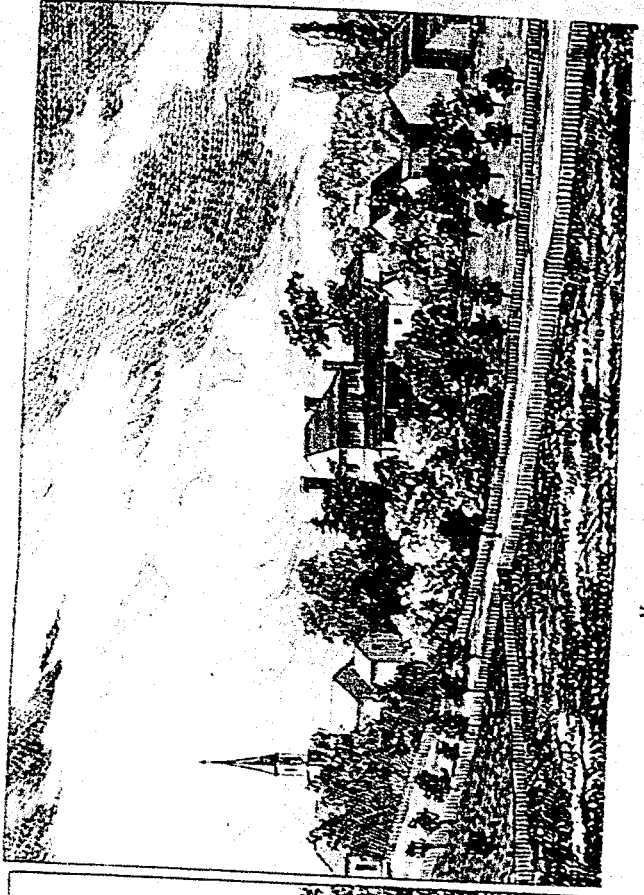
AS U. E. LOYALIST SCQUIRE'S HOME, 80 YEARS AGO.



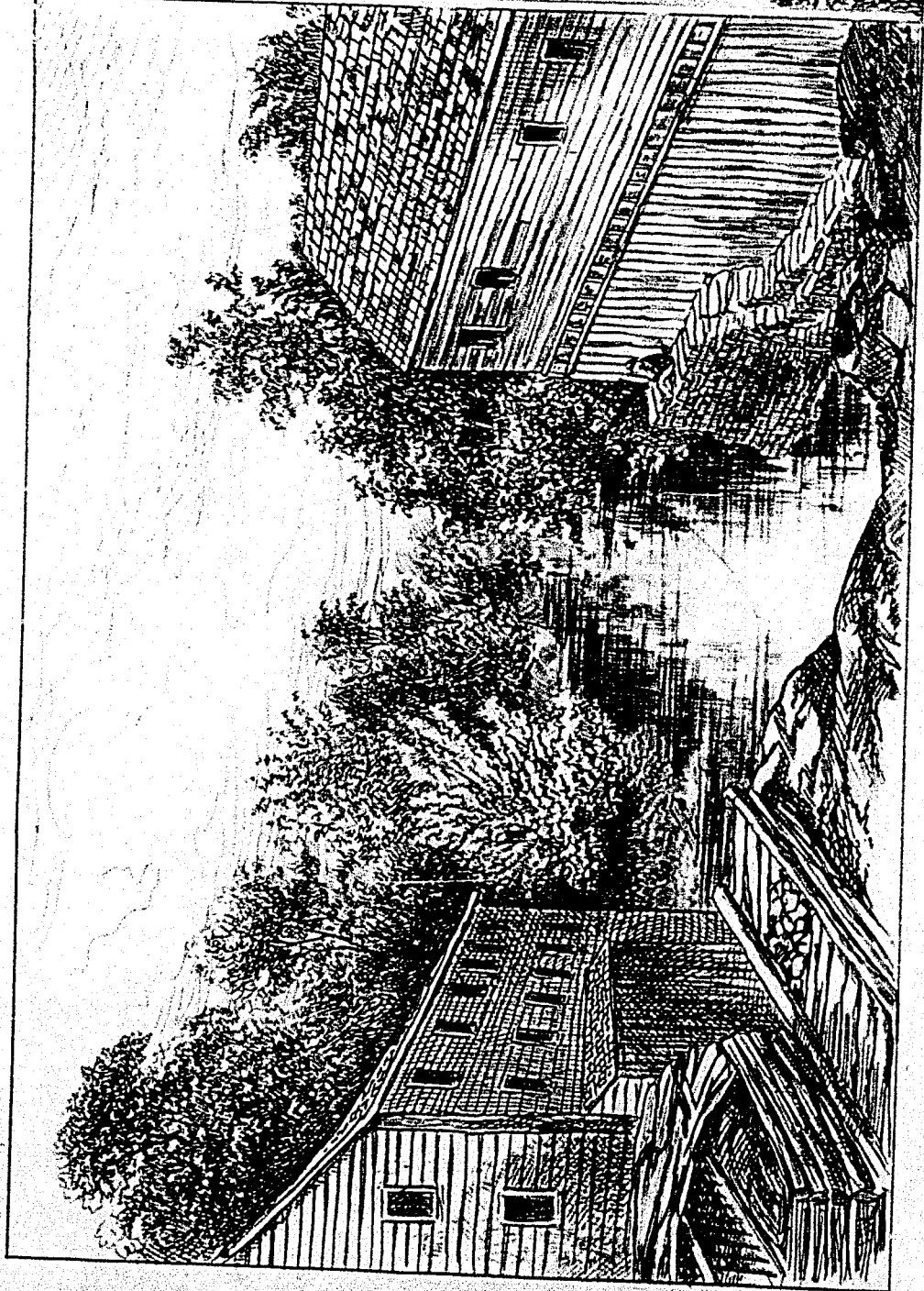
THE ELLISON MAUSOLEUM, ADOLPHUSTOWN.



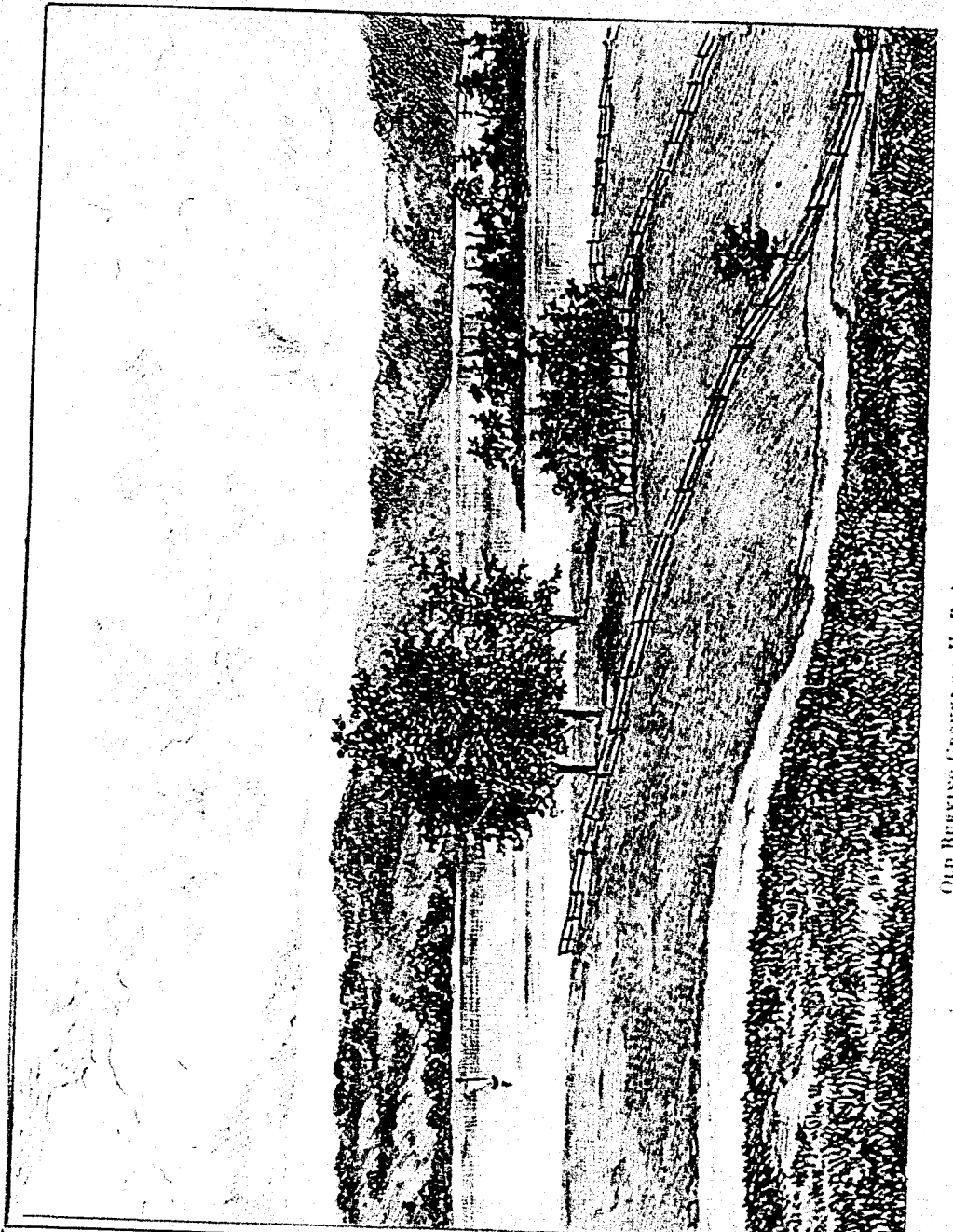
Old English Church, Adolphustown.



VIEW IN ADOLPHUSTOWN, GLENWOOD.



Old Mill at MICHAVEN, NEAR BATH



Old BERRYING GROVE OF U. E. LOYALISTS, ADOLPHUSTOWN

BAY OF QUINTE, ADOLPHUSTOWN. FROM SKETCHES BY A. W. MOORE.