

**BELDING, PAUL & CO.,**  
**Silk Manufacturers,**  
 MONTREAL.

ORGANZINES, TRAMS, SPUN SILK YARNS  
 and all threads for manufacturing purposes  
 made to order.

CORRESPONDENCE SOLICITED.

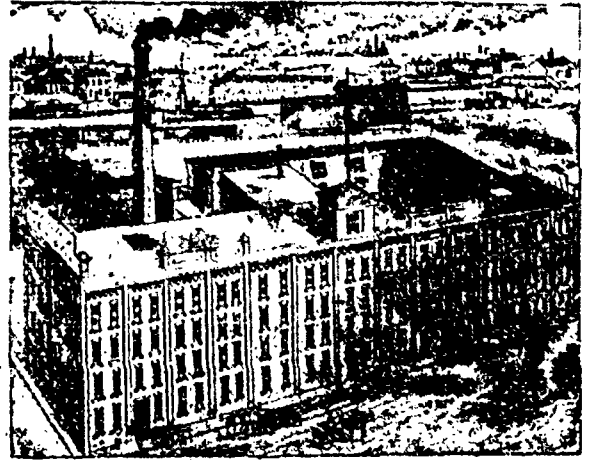
USE  
**MUCKLOW'S**  
 DYEWOOD EXTRACTS  
 AND DYEWOODS.  
 DOMINION DYEWOOD AND CHEMICAL CO.,  
 TORONTO,  
 SOLE AGENTS FOR CANADA.

A. R. CLARKE.

F. G. CLARKE.

O. E. CLARKE.

**A. R. CLARKE & CO.,**



MANUFACTURERS OF  
**GLOVES & MITTS.**  
 Office: 25 Front St. East. Works: 153 to 181 Eastern Ave., TORONTO.  
 Branches at Montreal, Quebec, Halifax, Winnipeg and Victoria.

**GEO. D. ROSS & CO.,**  
 Woolen Commission Merchants  
 AND  
 MANUFACTURERS' AGENTS.

*Correspondence Solicited.*  
*Advances made on Consignments.*

MONTREAL: - 648 CRAIG STREET,  
 TORONTO: 19 FRONT STREET, WEST.

**ROBERT S. FRASER,**  
 465 St. Paul Street, - MONTREAL.  
 WOOLS, NOILS, COTTONS, MOHAIR  
 Fancy Worsted Yarns.

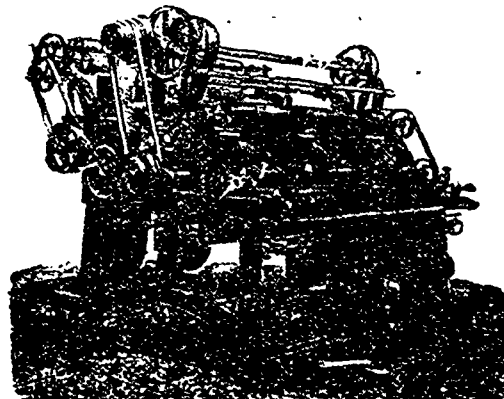
**L. M. TETLOW & SON'S,**  
 ENGLISH \* CARD \* CLOTHING,  
 Belting and Special Mill Furnishings.

N.B.—Stock of card clothing, belting and mill supplies kept in Montreal.

**BALL ELECTRIC**  
 LIGHT CO.  
 70 PEARL ST.  
 TORONTO - LTD.

INCANDESCENT \* ARC \* LIGHTING  
 PLANTS. GENERAL ELECTRICAL  
 SUPPLIES. POWER GENERATORS  
 AND MOTORS.  
 SEND FOR CATALOGUE

**CHARLES HEAP,**  
**French Napping Machines.**



**GROSSELIN-MOSER UNIVERSAL,**  
 For all kinds of Cotton, Woolen and Mixed Fabrics, either WET or DRY.  
 CAPACITY equal to eight Teasel Gigs or six card machines of other makes.

**GROSSELIN-MOSER DOUBLE-ACTION,**  
 Which naps both with and against pile.  
 FOR FACES OF FINEST WOOLENS, CAPACITY EQUAL TO TEN TEASEL GIGS.

**MOSER-MARTINOT LEVER,**  
 DOUBLE ACTION, IMITATION HAND NAPPER.  
 For FACES and BACKS of WOOLENS and WORSTEDS in all makes, and for  
 BLANKETS and PAPER MAKERS' FELTS especially,  
 CAPACITY, 4 Rollers, equal to 5; and 8 Rollers, to 10 Teasel Gigs.  
 Extra Card Rolls, also Card and Brush Clothing MADE ESPECIALLY for these Machines  
 constantly on hand. The only complete Machines on the Market. For full particulars, &c.,  
 Address, **HERBERT H. HEAP, Agent.**  
 600 Atlantic Avenue, Room 98, Boston.