

A translation of this Essay has been made for the Hartford Times, and has appeared lately in the excellent Chess column of that paper.

With one foot already at the brink of eternity, at the end of an existence which has frequently suffered from the most cruel trials...

(Chessplayer's Chronicle, May, 1879.)

CHESSES IN FRANCE.

The Handicap Tourney of fifty-one players, at the Cafe de la Regence, ended in the first prize, a work of art presented by M. Thibaud, being won by M. Chamier...

(Tour, Field and Farm.)

The match between Mr. Max Judd and eight St. Louis amateurs at odds of Kt has been concluded; it resulted in a splendid victory for Mr. Judd...

(Land and Water)

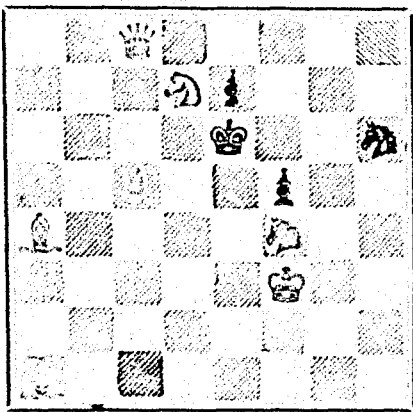
Last Tuesday Mr. J. H. Blackburne played blindfold against seven members of the Croydon Chess Club, viz., Dr. McNamee, and Messrs. Estridge, Cooper, Fritsch, Brown, Rattenbury, and Ready...

The two move problem which we give in our Column this week seems to have met with many admirers. The Derbyshire Advertiser says: "In our opinion this two-mover is simply perfect."

PROBLEM No. 227.

By A. Norlin. (Stockholm, Sweden.)

BLACK.



WHITE

White to play and mate in two moves.

GAME 263RD.

BLINDFOLD CHESSES.

One of the seven games played by Mr. Blackburne without sight of board or men at the Croydon Chess Club, on the 22nd instant:

(Evans's Gambit)

WHITE—(Mr. Blackburne.) BLACK—(Mr. Brown.)

- 1. P to K 4
2. Kt to K B 3
3. B to B 4
4. P to Q Kt 4
5. P to Q B 3
6. Castles
7. P to Q 1
8. P takes P
9. Kt to B 3
10. B to Q 3
11. P to Q 5
12. B to Kt 2
13. Kt to K 2
14. Q to Q 2
15. Kt takes Kt
16. B to B 3
17. B takes P
18. B takes Kt
19. Kt to Kt 3
20. Q R to B sq
21. B to B 3
22. K to R sq (ch)
23. P to K R 3
24. P to B 4
25. P to K 5
26. P takes P
27. P to K 6
28. Q to Kt 5

NOTES.

(a) A useless move, with a worse than useless object for the sequel shows that he wants to play Kt to K 4. Anything probably better than B to B 4 has not yet been discovered...

(b) No compulsion, but he must, even though a Pawn oes.

(c) Which throws away another Pawn if the adversary so decides, but, as will be seen, the blindfold player refrains, not caring to win in any such calico style.

(d) Mr. Blackburne's alarm, by which his handmaid, Victory, knows that she is wanted upstairs.

(e) A disappointment for White, who was playing for something after the following style: 27 B to Kt 3, 28 Q to Kt 5, B to Q B 4, 29 Kt to B 5, R takes P, 30 Q to R 6.

INTERNATIONAL TOURNEY GAMES.

Between Jacob Frech, of Warsaw, D.C., and H. Monek, of Dublin, Ireland.

GAME 36TH.

- WHITE.—(Mr. Frech.) BLACK.—(Mr. Monek.)
1. P to K 4
2. B to Q B 4
3. K Kt to K B 3
4. Castles
5. P to K R 3
6. Q Kt to Q B 3
7. B to Q Kt 3
8. K to R 2
9. P to Q 3
10. B to K 3
11. Q Kt to K 2
12. Q Kt to K Kt 3
13. Q to Q 2
14. P to Q B 4
15. P to Q R 4
16. K Kt to K Kt sq
17. P to K B 4
18. B takes K P
19. R takes Kt
20. R to K B 3
21. Q R to K B sq
22. K to R sq
23. P takes P
24. Kt takes B
25. Q to K B 2
26. P to K Kt 4
27. P takes Kt (ch)
28. B takes R
29. Q takes Q (ch)
30. R takes R
31. Kt to K 2
32. B to Q B 2
33. P to Q 1 (dis. ch)
34. P to Q 5
35. K to R 2
36. K takes P
37. K to Kt 4
38. P to Kt 3
39. B to K Kt 6
40. K to K B 3
41. B to K 8
42. B to R 5
43. Kt to K Kt 3
44. Kt to K 4 (ch)
45. B to K 7
46. B to Q 7
47. Kt to Kt 3
48. Kt to K 4
49. Kt to Kt 5
50. Kt to Kt 4
51. Kt to K B 3
52. K takes P
53. K to Kt 4
54. K to Kt 4 (ch)
55. Kt to B 5
56. K to R 5
57. B to K 6 (ch)
58. K to Kt 6
59. K to Kt 6
60. K to R 7
61. Kt to R 4
62. Kt to Kt 6 (ch)
63. K to Kt 8
64. B to Q B 8
65. B to Q R 6
66. B to Q Kt 3 (ch)
67. K to K B 7
68. K to K 6
69. Kt to K 7
70. Kt to Kt 8
71. Kt to B 6
72. Kt to K 8 (ch)
73. Kt takes Q P

S. L. L. N.

Solution of Problem No. 25.

WHITE. BLACK.

- 1. Q to Q 2
2. B to K 2 (dis. ch)
3. R mates
If 1 K takes Kt, then 2 to Q 2 to Q 7 (ch), and 3 B to K 2, discovering mate.
If 1 Kt to K 4, or Kt to Q 5, then 2 Q to Q 4

Solution of Problem for Young Players No. 23.

WHITE. BLACK.

- 1. Q takes Q (ch)
2. R to K R 3 (ch)
3. R to K R 5 mate.

PROBLEMS FOR YOUNG PLAYERS, No. 224.

WHITE. BLACK.

- K at Q B sq
R at Q B 3
Pawns at Q 2
Q Kt 6, K B 4
And K R 6
K at Q R 8
Pawns at K B 3
K R 2, Q Kt 2
And Q R 7

White to play and mate in four moves.

THE COOK'S FRIEND BAKING POWDER

Has become a HOUSEHOLD WORD in the land, and is HOUSEHOLD NECESSITY

In every family where Economy and Health are studied. It is used for raising all kinds of Bread, Rolls, Pastry-cakes, Griddle Cakes, &c., &c., and a small quantity used in Pie Crust, Puddings, or other Pastry, will save 90% the usual shortening, and make the food more digestible.



SAVE TIME, IT SAVES TEMPER, IT SAVES MONEY

For sale by storekeepers throughout the Dominion, and wholesale by the manufacturer.

W. D. McLAREN, UNION MILLS,

7-9-30-362 35 College Street

GRAY'S SPECIFIC MEDICINE. TRADE MARK. The Great English Remedy. Before Taking... After Taking...

THE GRAY MEDICINE CO., WINDSOR, ONT. Sold in Montreal by all Wholesale and Retail Druggists...

50 Perfumed Chromo and Lace Cards, name in gold in fancy case, 10c. Davids & Co., Northford, Ct.



GOVERNMENT RAILWAY. Western Division.

SHORTEST AND MOST DIRECT ROUTE TO OTTAWA.

On and after MONDAY, APRIL 14th, Trains will leave HOCHELAGA DEPOT as follows: Express Trains for Hull at 9.30 and 5.59...

AGENTS, READ THIS.

We will pay Agents a salary of \$100 per month and expenses, or allow a large commission to sell our new and wonderful inventions...

\$10 to \$1000 invested in Wall St. Stocks makes fortunes every month. Book sent free explaining everything.

IMPORTANT NOTICE. THE Burland-Desbarats Lithographic Co.

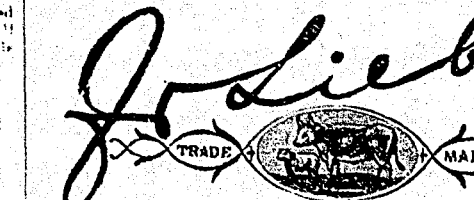
5 & 7 BLEURY ST., Regs to inform the BANKERS, MERCHANTS and BUSINESS MEN of the Dominion...

ENGRAVING. ELECTROTYPING. STEREOTYPING. LITHOGRAPHING and TYPE PRINTING.

Photo-Electrotyping & Wood Engraving. IN THE BEST STYLE, AND AT LOW PRICES.

From the facilities at their command, and the completeness of their establishment, the Company feel confident of giving satisfaction to all who entrust them with their orders.

LIEBIG COMPANY'S EXTRACT OF MEAT



"Is a success and boon for which Nations should feel grateful."—See Medical Press, Lancet, Brit. Med. Jour., &c. Consumption in England increased tenfold in ten years.

PURE COCOA. ROWNTREE'S Prize Medal ROCK COCOA.

As this article contains no admixture of Fatina, care must be taken not to put too large a quantity into the cup.

NOTE: Beware of inferior makes, sometimes substituted for the sake of larger profits.

UN DURHAM CORN FLOUR.

British American BANK NOTE COMPANY.

MONTREAL. Incorporated by Letters Patent. Capital \$100,000.

General Engravers & Printers

Bank Notes, Bonds, Postage, Bill & Law Stamps, Revenue Stamps, Bills of Exchange,

DRAFTS, DEPOSIT RECEIPTS, Promissory Notes, &c., &c., Executed in the Best Style of Steel Plate Engraving.

Portraits a Specialty. G. R. BURLAND, President & Manager.

JUST PUBLISHED

CHISHOLM'S ALL-ROUND ROUTE AND PANORAMIC GUIDE OF THE ST. LAWRENCE,

With corrections to date. It contains full descriptions of the points of interest on the "All Round Route" including Hudson River, Trenton and Niagara Falls...

CHEAPEST AND BEST. DAILY WITNESS, MONTREAL WITNESS, WEEKLY WITNESS, CANADIAN MESSENGER, NEW DOMINION, MONTHLY

JOHN DOUGALL & SON. 213 and 220, St. James Street, Montreal. Electrotyping and Job Printing, Chromo and plain