

readily be seen how a few flies wintering over may give rise to millions of flies in late summer.

The prompt treatment of horse-manure with lime in special pits should be insisted upon in towns and cities, but where flies are abundant we must continue to use screens and sticky fly-paper to mitigate the annoyance.

MOSQUITOES.—Here again, there are several species. The most common form is perhaps *Culex pungens*. The eggs are laid on the surface of the standing water of ponds, marshes and rain-barrels; the wrigglers escape from the eggs in about 24 hours, and transform to pupæ in 10 or 12 days, and the adult mosquitoes make their appearance two or three days after, a generation occupying, therefore, 14 to 16 days during warm weather. As in the case of the house fly, the winter is passed in the adult stage. It is now known that one species of mosquito is the cause of malaria and another of yellow-fever.

Careful attention to water-barrels and the drainage of ponds and marshes is absolutely necessary if freedom from mosquito attacks is desired. A little kerosene poured on stagnant water containing wrigglers will kill them.

FLEAS.—The most common flea is the Cat- or Dog-flea (*Pulex serraticeps*) (Fig. 4). These are sometimes very abundant in rooms occupied by dogs and cats. The eggs are deposited loosely among the hairs of these animals, and often drop to the floor or matting, where the larvæ develop, especially if the mats are undisturbed and the floors are not swept. Liberal dusting of the infested animals and floors with pyrethrum insect powder, the renewal of the mats for the dogs, and

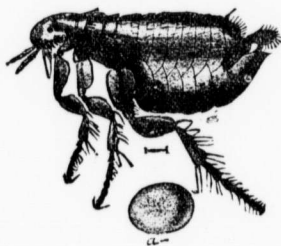


Fig. 4.—Flea and its egg, greatly magnified.

the burning of the infested mats, will control fleas.

BED BUGS.—These disgusting insects (*Cimex lectularia*) sometimes get into the houses of the most careful housekeepers, when travellers are entertained. The cheaper hotels in many parts of the west are often badly infested, and the bedrooms have a decided "buggy" odour. These festive insects hide in the daytime in the cracks of the furniture and walls,