

<p>Estimates for <b>LEATHER RUBBER "THISTLE"</b> and <b>GANDY BELTING</b> will be found favorable</p>	<p>We are the only Manufacturers in Canada making <b>GENUINE OAK TANNED BELTING</b> in "Extra," "Standard" and "Dynamo."</p>	<p>We Manufacture <b>CARD CLOTHING</b> set in <b>OAK LEATHER, FLEXIFORT and RUBBER</b></p>	<p><b>HEDDLES, LOOM REEDS, PICKERS, RUB. APRONS, Etc.</b></p>
-------------------------------------------------------------------------------------------------------------------------------	--------------------------------------------------------------------------------------------------------------------------------------------------------------	------------------------------------------------------------------------------------------------------------------------	-------------------------------------------------------------------------------

**MONTREAL \* THE J. C. McLAREN BELTING CO. \* TORONTO**

**SAMUEL LAWSON & SONS, LEEDS, England**

MAKERS OF

**Machinery for Preparing and Spinning  
Flax, Tow, Hemp and Jute**

**Special Machinery for the Manufacture of Binder and Ordinary Twines**

**Good's Patent Combined Hackling  
and Spreading Machine**

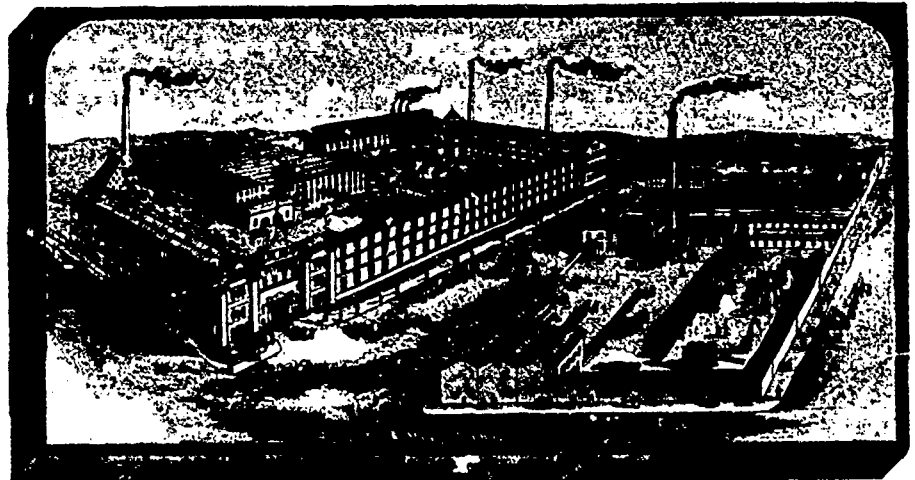
**Patent Automatic Spinning Frames  
Improved Laying Machines**

and other special machinery for the  
manufacture of Rope Yarns.

ALSO OF

**Brownell's Patent Twisting and Laying  
Machines for Twines**

Council Medal, London, 1851; Grand Medal,  
Paris, 1867; Prize Medal, Moscow, 1872; Diploma  
of Honor, Vienna, 1873; Highest Award, Phila-  
delphia, 1876; Gold Medal, Paris, 1875; Highest  
Award (Medal), Melbourne, 1880



WRITE TO THE

**PATON MFG. CO.**

**Sherbrooke, Que.**

FOR

**Worsted Knitting and Fingering Yarns**

"We hold thee safe."

**The Dominion Burglary Guarantee Co.  
Limited**

**Head Office, Montreal, Can.**

**CAPITAL, \$200,000.**

Insurance against burglary and housebreaking. Policies clear and free  
from vexatious or restrictive clauses.

**JOHN A. GROSE, GENERAL MANAGER.**

**L. S. WATSON MANUFACTURING CO.  
LEICESTER, MASS.**

**Manufacturers of WATSON'S PATENT MACHINE WIRE HEDDLES**

Guaranteed to be perfectly adapted to weaving all kinds of Woolen, Cotton and Worsted Fabrics, Fancy Cotton, etc., etc. Superior Harness Frames furnished promptly. Also Hand Cards of every description