

## NEW DISCHARGE EFFECTS IN CALICO PRINTING.

Of late some new applications of old methods and some modifications in the production of discharges have been adopted in many calico print works which have resulted in the production of many new and interesting effects that, when placed on the market, have been received with some favor. A brief account of these may not be uninteresting.

Unlike most basic dyes the Tannin Orange R and New Phosphine G of Messrs. Cassella & Co. (Wm. J. Matheson & Co., Ltd., Sole agents for United States and Canada), are easily dischargeable with a tin salts discharge to a good white. Now by taking advantage of the fact that the Diamino Dyes are also dischargeable, whereas basic dyes

such as Thioflavine T, Phosphine II, Solid Green Crystall, Safranine, Rhodamine, Tannin Holiotrope, etc., are not dischargeable and Naphtindone BB is turned red, it is astonishing what a variety of effects may be obtained. Thus by first dyeing with a Diamine Color, then printing on Tannin Orange R mixed with Safranine and next a discharge, white, red and scarlet designs can be produced on a colored ground. Where a white discharge is wanted then the following recipe may be followed: Four pounds acetate of tin, twenty eight degrees Tw., nine ounces wheat starch,  $1\frac{1}{2}$  pounds white dextrine, four ounces citric acid and  $1\frac{1}{2}$  pounds ferrocyanide of tin paste. This latter article is made by precipitating tin crystals with yellow prussiate of potash, washing and draining the precipitate of ferrocyanide of tin which is got until it is about

a fifty per cent. paste. On both Diamino Colors and Tannin Orange R and New Phosphine G, this recipe gives good whites. A short steaming after printing only is needed. When Tannin Orange R or New Phosphine G is used in combination with other tannin dyes, it will be found best to use an acetate of tin discharge, which can be made from four pounds acetate of tin, twenty-eight degrees Tw.,  $\frac{3}{4}$  pound wheat starch,  $1\frac{1}{2}$  pounds white dextrine and  $\frac{1}{2}$  pound citric acid, mixing this with the other ingredients as may be required. Now let us speak more particularly of some of the effects which can be produced.

For yellow, red and dark blue on blue, a bottom is dyed with Diaminogone Blue BB, diazotized and developed with betanaphthol, then there is printed on a mixture of Tannin Orange R and Naphtindone BB, finally a

## JOHN J. KELLER & CO.

104 and 106 MURRAY ST.  
NEW YORK

220 Church St., Philadelphia.

135 Pearl Street, Boston.

## Aniline Colors, Dyewood Extracts, Sumac and Nutgall Extracts.

**FAST COLORS** for Wool Dyeing,  
One Dip Cotton Colors, Novelties  
and Specialties for Calico  
Printing.

MANUFACTURED BY

**JOHN R. GEIGY & CO.**  
BASLE, SWITZERLAND

## LIGHT YOUR FACTORY WITH

# LUXFER PRISMS

The latest device for

## LIGHTING

dark rooms and  
offices

By Daylight

For catalogue  
and estimates  
write to

Luxfer Prism  
Co'y, Limited.

58 Yonge Street, - TORONTO.

## The Canadian Manufacturer

Toronto, Canada,

Is the OFFICIAL ORGAN of the

Canadian Manufacturers' Association,

which represents all the Important Manufacturing Industries of the Dominion of Canada.

Published Twice a Month.

### SUBSCRIPTIONS:

Canada and United States, \$1.00 per year.  
All other Countries in Postal Union, Eight  
Shillings Sterling per year, postage paid.

Importers in any country of the world desiring accurate information regarding any Canadian manufacturing industries and their products should correspond with

**THE CANADIAN MANUFACTURER,**  
TORONTO, CANADA.

No Charge Made for Giving Information.

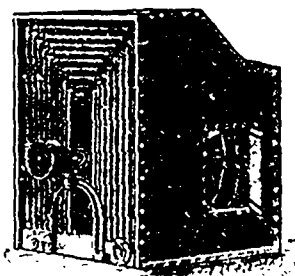
## HEATING . . .

The Fan System of Steam Heating for Heating  
of Factories and all Classes of Buildings.

## DRYING . . .

Appliances for Drying

Lumber, Brick, Wool, Cloth,  
Hair, Soap, Glue, etc.



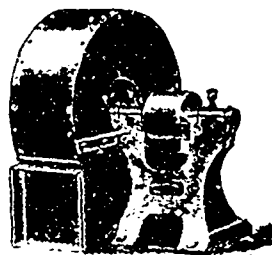
Heater and Housing.

## VENTILATING . . .

Ventilating Fans for removal of Dust, Foul Air, etc.

WRITE FOR CATALOGUE AND PRICES.

**McEachren Heating and  
Ventilating Co., GALT, ONT.**



Fan.

## F. E. ATTEAUX & CO.

53 Colborne Street  
Toronto,

15 Lemoine Street, Montreal.

Boston, New York,  
Philadelphia, Chicago, and  
Gloversville, N.Y.

**Dyewood Extracts,  
One Dip Alizarin ds,  
Aniline Colors,  
Dyestuffs and  
Chemicals.**