

# MINING SUPPLIES OF ALL KINDS

PICKS SHOVELS WIRE ROPE CHAIN  
 DYNAMITE POWDER DETONATORS FUSE  
BAR IRON STEEL DRILL STEEL IN LONG AND SHORT LENGTHS  
 STEAM & COMPRESSED AIR HOSE HARDWARE  
 PIPE VALVES FITTINGS ETC.

**RICE LEWIS & SON**  
 LIMITED  
 HARDWARE TORONTO

## THE BUCYRUS COMPANY

SOUTH MILWAUKEE, WISCONSIN.

### STEAM SHOVELS AND DREDGES.

PLACER MINING MACHINERY OF THE ELEVATOR BUCKET TYPE.

RAILROAD WRECKING CARS AND PILE DRIVERS.

CENTRIFUGAL DREDGING PUMPS.

For  
 Miners  
 Pit Sinkers

## DYNAMITE AND EXPLOSIVES

For  
 Quarrymen  
 Contractors

... Manufacturers and Dealers in ...

## ELECTRIC BLASTING APPARATUS, FUSE, CAPS, &c.

DAN'L SMITH,  
 C. A. MACPHERSON,  
 Proprietors.

**ONTARIO POWDER WORKS**

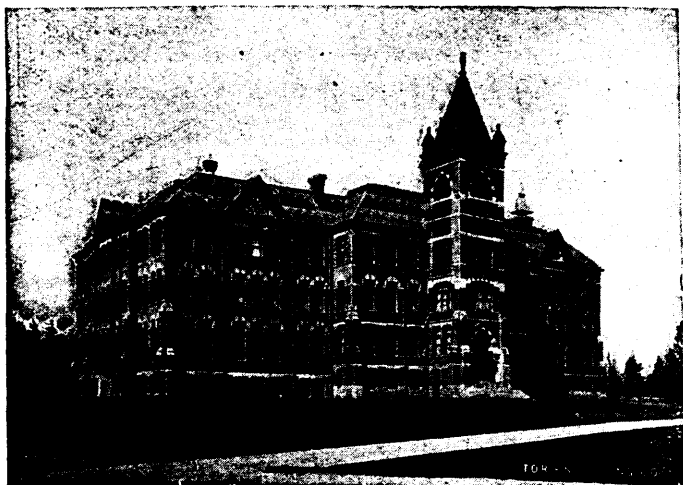
176 ONTARIO STREET

**Kingston, Ont.**

## School of Practical Science, Toronto

ESTABLISHED 1878.

AFFILIATED TO THE UNIVERSITY OF TORONTO.



This School is equipped and supported entirely by the Province of Ontario and gives instruction in the following departments:

- 1—CIVIL ENGINEERING
- 2—MINING ENGINEERING
- 3—MECHANICAL & ELECTRICAL ENGINEERING
- 4—ARCHITECTURE
- 5—ANALYTICAL AND APPLIED CHEMISTRY

Special Attention is directed to the Facilities possessed by the School for giving Instruction in Mining Engineering. Practical Instruction is given in Drawing and Surveying, and in the following Laboratories:

- |            |                |              |
|------------|----------------|--------------|
| 1—CHEMICAL | 3—MILLING      | 6—ELECTRICAL |
| 2—ASSAYING | 4—STEAM        | 7—TESTING    |
|            | 5—METROLOGICAL |              |

The School also has good collection of Minerals, Rocks and Fossils. Special Students will be received as well as those taking regular courses.

FOR FULL INFORMATION SEE CALENDAR.

**L. B. STEWART, Secretary.**