

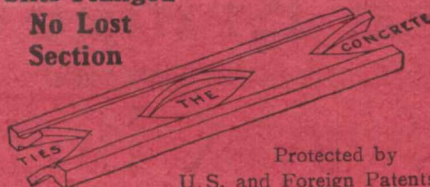
A SAFETY

Not a Bike—It does not run or slip—
Not a Razor—It does not cut—

But a **BAR** that

C. B. RUSHMER, C.E.
o Engineering Department

**Slits-Flanged
No Lost
Section**



Protected by
U.S. and Foreign Patents

Send Specifications to the Home Office

No additional Tonnage required to acquire "Safety." The tie gives that; and thus you save in the cost of your structure—Do you realize what a sure proposition the

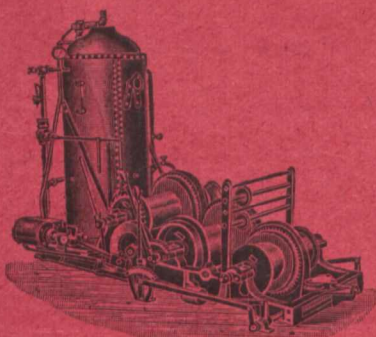
**INNER-BOND BAR FOR CON-
CRETE REINFORCEMENT IS?**

ARTHUR PRIDDLE
San Francisco, Cal., U.S.A.

Our Book Department can furnish
any book on engineering published.
Send for our latest list.

M. Beatty & Sons, Limited, Welland, Ont.

MANUFACTURERS OF



Dredges, Ditchers,
Derricks, Steam Shovels,
Steel Dump and Deck Scows,
Submarine Rock Drilling Machinery,
Centrifugal Pumps for Water and Sand,
Stone Derricks, Clam-Shell Buckets,
Steel Skips, Coal and Concrete Tubs,
and other Contractors' Machinery

AGENTS

E. Leonard and Sons, Montreal, Que. and St. John, N.B. R. Hamilton & Co.
Vancouver B.C. Canadian Fairbanks Co., Toronto, Ont. and Winnipeg Man.

MONTREAL STEEL WORKS, Ltd.

Manufacturers of

Steel Castings

Acid Open Hearth System

SPRINGS, FROGS, SWITCHES, SIGNALS,
FOR STEAM AND ELECTRIC RAILWAY

Canal Bank, Point St. Charles,
MONTREAL.

R. D. WOOD & CO.

PHILADELPHIA, PA., U.S.A.

Water and Gas Works Supplies,
Cast Iron Pipe and Castings,
Mathews Hydrants and Valves,

SUCTION PRESSURE **GAS PRODUCERS** POWER PLANTS

JEFFREY

COAL CUTTING—ELEVATING—CONVEYING—WASHING
MACHINERY—POWER TRANSMISSION—SCREENING—
CRUSHING—DRILLING—HAULING—Write for Catalogue Series
"U" and mention subjects in which you are especially interested,
THE JEFFREY MANUFACTURING CO., MONTREAL QUE.

THE CANADIAN ENGINEER

reaches weekly the
LEADING Civil, Mech-
anical, Railroad, Muni-
cipal and Provincial
Works Engineers and
Engineering Contractors
in ALL parts of Canada
and many points in the
United States and
Europe.

All Its Readers
are Buyers

THE MODERN JOINTING
FOR WATER AND GAS MAINS

LEAD WOOL
"SHREDDED LEAD"

Made in England



A Strand of Lead Wool coiled up for transit

JOHN GARDE & CO.

142 Victoria Street, TORONTO, ONT.

Phone Main 4923

"Just around the corner from Queen and Yonge"

Sole Distributors in Canada for the
British Manufacturers