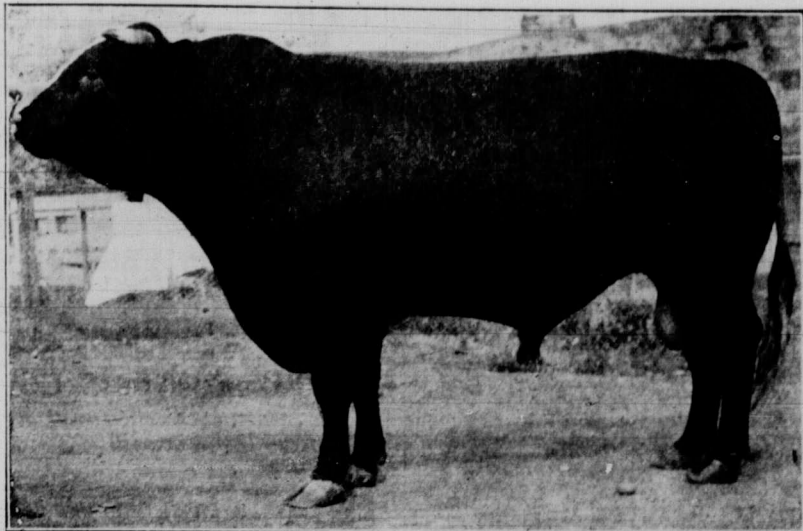


Calgary Exhibition

With the opening of the Calgary Industrial Exhibition, on June 29, the Western summer fair circuit had its commencement. There is nothing so encouraging as a good start, and the fact that this exhibition was so successful in every way will help materially in keeping up the interest in the following shows. Calgary fair this summer excelled itself. It has always been above the average as fairs go, but at this particular time it well deserves the title of the largest and best exhibition in the West. The entries this year were over seven thousand, this being more than a thousand in advance of last year. The crowds visiting the fair were larger than ever before, it being estimated that

of Alberta exhibitors. Alberta has always been recognized as a stock country, and in substantiation of this fact entries of Alberta bred stock were far in excess of those of previous years. The greatest increase in entries was noticed in the hog classes, but on account of poor accommodation these did not show up to advantage. In the matter of accommodation the far-sightedness of the fair board in proposing an appropriation of \$360,000 for the purpose of new buildings was amply justified by the great increase in entries, and the fact that this suggestion was passed when put as a by-law before the people of Calgary shows clearly the interest which is taken in the fair and the bene-



"ROSY STAR"
Third Prize Shorthorn Bull at Calgary Industrial Exhibition
Owned by P. M. Brett, Calgary

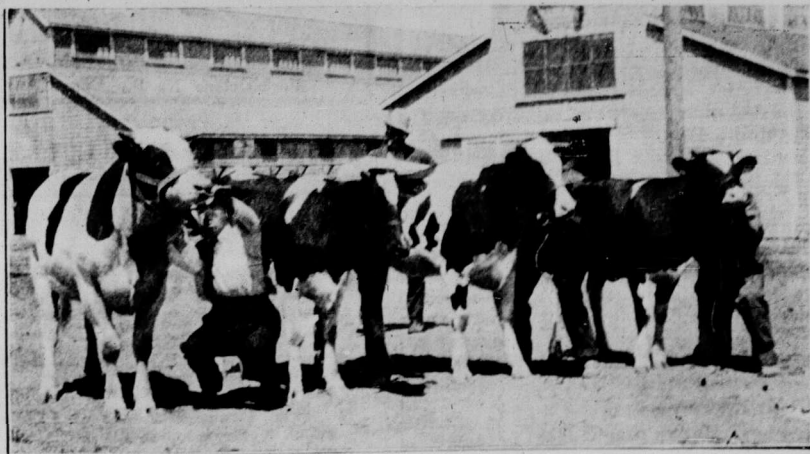
more than 100,000 people visited Victoria Park during the progress of the exhibition. On July 1 alone almost 40,000 people passed thru the turnstiles. Splendid weather prevailed thruout the whole week, the only criticism which could be voiced in this connection would be that it was a trifle too hot. The entries were so large that the ordinary available accommodation was not at all adequate for the space requirements, and hence tents and lean-tos of all sizes and descriptions had to be provided in which to house the very numerous exhibits.

The unquestioned success of the exhibition is largely due to the energy and able management of E. L. Richardson,

fit which must be recognized to accrue to the city thru its operation. Outside of the show rings the exhibits of art, industries, agriculture and other branches of work were extremely good, and from an agricultural standpoint the exhibit of the Dominion Experimental Farms was particularly noticeable. Not only was it extremely artistic, but it was of greater value in that it was extremely educational in nature, showing very simply and clearly many facts which may be used to good advantage in the improvement of his farm by any intelligent farmer.

The Judging

The judging in practically every instance gave entire satisfaction. Clydes-



First Prize Junior Holstein, bred at Calgary Industrial Exhibition
Owned by Jos. H. Laycock, Okotoks, Alta.

the popular fair manager, backed up by a board of directors whose main object seems to be to make the fair the best in Western Canada. Mr. Richardson is a master of detail, and his kindly disposition, together with his solicitous care for the comfort and pleasure of all connected in any way with the exhibition, accounts in a large measure for the undoubted success which must be accorded to the Calgary Industrial Exhibition of 1914.

Large Alberta Exhibit

One of the chief features which might be noted in regard to the exhibits this year was the fact of the large entry

and Shires were judged by James McKirdy, Napinka, Man. Mr. McKirdy's name is well known to all breeders thruout the West, and his consistent selection of the one type—clean, straight limbs, silky hair, flat bone, strong, straight action and as much size as could possibly be found—together with his accurate judgment, left nothing to be desired in the matter of decisions. Percherons, Belgians and Suffolk Punch horses were judged by J. W. Fletcher, Elgin, Ill., whose decisions were quite in keeping with his high reputation as a judge. In the beef cattle classes A. G. Meyer, Edmonton, Alta., gave good

REMINGTON
UMC

ARROW-NITRO CLUB and the New Remington SHOT SHELLS



Everybody calls them "The Speed Shells," for short.

Steel Lined, all the explosive force kept back of the shot. No side expansion. A straightaway blow that gets the load there quick.

You take a shorter lead on the fast birds—get more of them.

To get the Speed Shells be sure to see the Red Ball Mark of Remington-UMC on every box.

Also ask for the "Remington," our new low priced smokeless shell, made for the man who needs to consider price rather than extreme refinement.

To keep your gun cleaned and lubricated right, use Rem Oil, the new powder solvent, rust preventative, and gun lubricant.

Remington Arms-Union Metallic Cartridge Co.
Windsor, Ontario

Purchase Your Lumber Direct from the Mills

We sell direct to the farmer from the mill. We have no agent, we do our business by mail, pay no commissions, and we sell for cash. Therefore we not only eliminate every possible expense, but we avoid bad debts. And the farmer gets the benefit of this enormous saving. We manufacture every grade of lumber, finish, mouldings, sash and doors, and fancy doors, shingles and lath, everything you require for house or barn. We will give you mill prices and the very best quality of lumber. We guarantee everything up to grade. We can ship you all the different articles in the same car. Our prices will be quoted at your nearest railway station. Another advantage to you is you have no delay with your workmen waiting for material. Don't be influenced by local dealers, just attend to your own affairs, and write for prices at once. Carload is about 25,000 feet. If you do not require that much, get a neighbor to join you. **THIS IS THE TIME AND PLACE TO BUY. THE SAVING WILL ASTONISH YOU.** Send a bill for prices, and we will give you net cost at your own station.

FARMERS LUMBER SUPPLY COMPANY

ROGERS BUILDING, VANCOUVER, B.C.

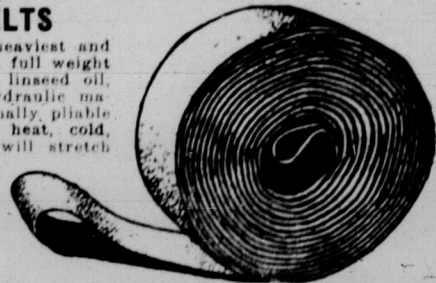
THRESHERS' SUPPLIES.

Make \$1 do the work of \$2

We save you money on high grade threshers' supplies, as our prices are based on the actual manufacturing cost, every article guaranteed to be first class.

ENDLESS STITCHED BELTS

T 10. Our "Reliable" Belts are the heaviest and most durable offered. They are made on full weight 32-oz. duck. They are filled with pure linseed oil, pressed with the new and improved hydraulic machine process, making the belt exceptionally pliable and durable. They are impervious to heat, cold, steam, gas or acid fumes. All belts will stretch some. The "Reliable" will stretch but little. It is made on a special weave of duck of proper width for each size belt, giving a proper salvage and even strain on both edges. You will find our "Reliable" Drive Belts the best and most durable and pliable you ever used.



100 ft. 7 in. x 4 ply.	\$26.00	120 ft. 7 in. x 4 ply.	\$29.50	150 ft. 7 in. x 4 ply.	\$39.50
100 ft. 7 in. x 5 ply.	32.00	120 ft. 7 in. x 5 ply.	37.50	150 ft. 7 in. x 5 ply.	45.50
100 ft. 8 in. x 4 ply.	30.00	120 ft. 8 in. x 4 ply.	36.00	150 ft. 8 in. x 4 ply.	43.00
100 ft. 8 in. x 5 ply.	38.00	120 ft. 8 in. x 5 ply.	42.50	150 ft. 8 in. x 5 ply.	49.50

TANK PUMPS AND OUTFITS

Capacity 2 Barrels per minute



5.50

No other style low-down pump has stood the tests of time like this one. It has the greatest strength. Is the **SIMPLEST**, and handles more water with less labor than any other low-down pump. Can be successfully used for filling thresher tanks, washing out boilers, for use in shallow stock wells, draining cellars or irrigation purposes.

T 31. Price complete as shown in cut and including 2-in. round self-fastening strainer, nozzle and hose band. Weight 95 lbs. Price \$5.50.

T 40—20-FT. "STANDARD" OUTFIT

Consisting of Low-Down Tank Pump, T 31, complete, with hose bands and strainer. 20 ft. 2-in. wire-lined "Standard" Suction Hose, 10 ft. 1-in. 3-ly "Queen" Discharge Hose. Complete outfit (Weight 140 lbs.) Price \$13.65.

T 41—25-FT. "STANDARD" OUTFIT

Consisting of Low-Down Tank Pump, T 31, complete, with hose bands and strainer. 25 ft. 2-in. wire-lined "Standard" Suction Hose, 10 ft. 1-in. 3-ly Discharge Hose. Complete outfit (Weight 150 lbs.) Price \$15.40.

T 42—20-FT. "YELLOW JACKET" OUTFIT

Consisting of Low-Down Tank Pump, T 31, complete, with hose bands and strainer. 25 ft. 2-in. "Yellow Jacket" Suction Hose, 10 ft. 1-in. 4-ply Discharge Hose. Complete Outfit (Weight 160 lbs.) Price \$17.00.

T 43—15-FT. "YELLOW JACKET" OUTFIT

Consisting of Low-Down Tank Pump, T 31, complete, with hose bands and strainer. 15 ft. 2-in. "Yellow Jacket" Suction Hose, 15 ft. 1-in. 4-ply Discharge Hose. Complete Outfit. Price \$20.00.



OILS, LUBRICANTS AND AXLE GREASE

Threshermen and Farmers desiring high-grade lubricating oils will profit by sending us a trial order. We make a specialty of this line and are handling the very best oils that can be compounded at the lowest known prices; cylinder oils, castor machine oils, harvester oil, gasoline engine oil, thresher hard oil. Get our prices on steel barrels and all other lines of threshers' supplies. Catalog free on request.

PLOW SHARES

Bolled and fitted to suit. Send us your orders. Give name and mark on shares. 12 in., \$1.90; 14 in., \$2.20; 16 in., \$2.40.

C. S. JUDSON CO. LTD., 181 Market St., Winnipeg