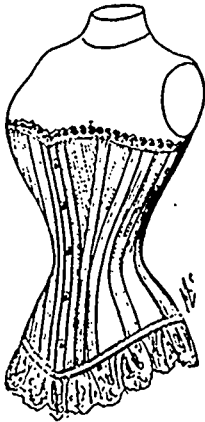


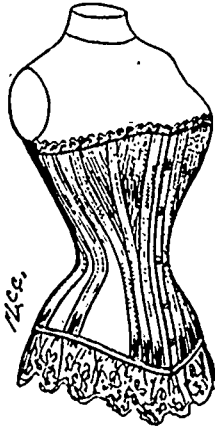
# Corset Chances.



No. 101

Ladies' Corsets, as cut No. 101, made of heavy jean, long waist, boned bust, two side steels on each side, imported satteen stripping, five-hook clasp, trimmed with lace, perfect fit, colors white and drab, sizes 18 to 30 inches.

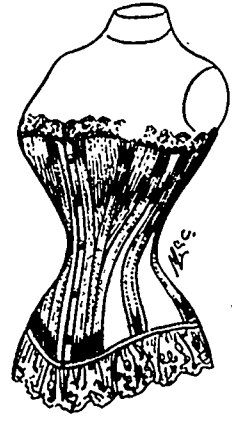
PRICE, 25c.



No. 121.

Ladies' Corsets, No. 121, as cut, made of fine coutille, boned bust, best satteen stripping, silk flossing at lower edge, silk embroidery trimming, two side steels on each side, five-hook clasp, sizes 18 to 30 inches, white and drab.

PRICE, 50c.



No. 161.

Ladies' Corsets, No. 161, made of best American coutille, two side steels on each side, long waist, silk flossing at top and bottom, best English satteen stripping, filled with steel wire, drab and white, sizes 18 to 30 inches.

PRICE, 75c.

No. 111.

Ladies' Corsets, made of coutille, two side steels on each side, long waist, boned bust, five-hook clasp, silk embroidery trimming, white and drab.

PRICE, 40c.



No. 102.

Ladies' Corsets, No. 102, same style as shown in cut, heavy jean, two side steels on each side, boned bust, long waist, fine satteen strips, silk flossing at lower edge, finished with silk embroidery at top, five-hook clasp, drab and white, sizes 18 to 30 inches.

PRICE, 35c.

Summer Corsets, "Sprite," fine netting, neatly stripped with heavy jean, five-hook clasp, two side steels, lace edging, sizes 18 to 30 inches.

PRICE, 35c.

Ladies' Summer Corsets, "Sylph," fine netting, side steels, five-hook clasp, jean stripping, lace edging, sizes 18 to 30 inches.

PRICE, 25c.

Summer Corsets, "Coldwaive," extra fine netting, two side steels on each side, fine satteen stripping, five-hook clasp, silk embroidery edge, perfect fit, sizes 18 to 30 inches.

PRICE, 50c.

THE T. EATON CO. LIMITED

Main Entrance—

190 YONGE STREET,

TORONTO.