

GOVERNOR GENERAL AT CHURCHILL FALLS



Governor-General Roland Michener (left) and Brinco Chairman R.D. Mulholland admire the mighty Churchill River.

Governor-General Roland Michener recently visited the Churchill Falls power project in Labrador, accompanied by General F.R. Sharp, chief of the Canadian Defence Staff, and by his Principal Secretary, Esmond Butler.

While the physical progress of the development was of particular interest to him, Mr. Michener took every opportunity to meet and talk with the men building the project.

Among Mr. Michener's hosts were Robert D. Mulholland, chairman of the board of Brinco Limited; Henry Borden, previous Brinco chairman and still a director; H.W. Macdonell, vice-president of Brinco

and of Churchill Falls (Labrador) Corporation; R.D. Boivin, CFLCo vice-president and project manager; and R.H.P. Thom, CFLCo's manager of operations.

The viceregal party arrived late on a Saturday morning and, after lunch and a project-briefing by Mr. Boivin, there was a helicopter tour of the transmission line, Jacopie spillway, Whitefish control structure, the forebay, intake structure and the main camp and townsite.

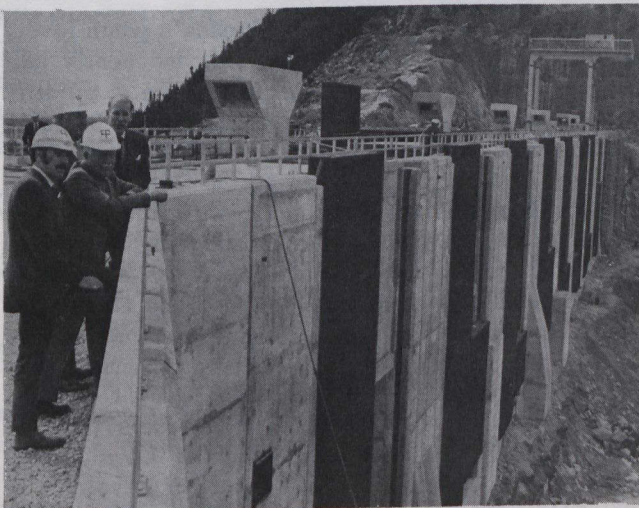
Underground, the group toured the east end of the powerhouse, walked through the transformer gallery, then proceeded to the west service bay in the powerhouse, and the surge chamber.

At the tailrace tunnels, where the discharged water from the powerhouse enters the lower Churchill River, Mr. Michener mounted a large mechanical shovel operated by Spino Construction. The Governor-General stood by the operator as he made several passes on the cofferdam.

From the tailraces the party returned to the top of the river bank to inspect the towers supporting the conductor cable for the 6,000-foot span across the Churchill River.

Later in the evening Mr. Mulholland and Mr. Borden presented Mr. Michener with a large, framed colour photograph of Churchill Falls. In return Mr. Michener presented the company with his official viceregal photograph, which will now hang in a place of honour.

The next day, the Governor General visited some of the main camp and community facilities. He inspected a bunkhouse, then toured the hospital. A tour of the town centre completed the Governor General's visit.



The Governor General inspects the intake structure and its newly-installed trash racks, Churchill Falls project, Labrador.