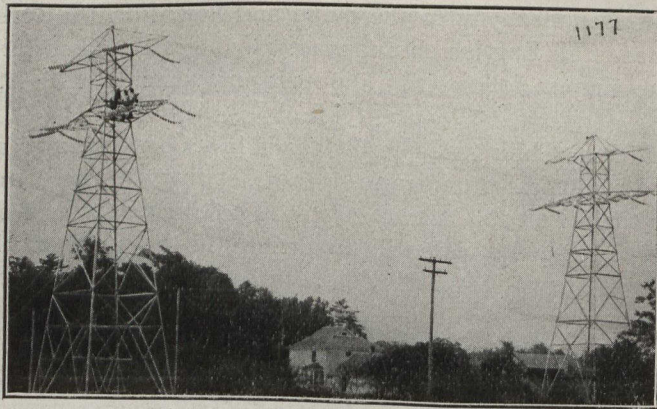


The Hydro-Electric Transmission Line.

The Transmission Line, part of which is now in operation, was started in 1909 and the first section put in operation from Niagara Falls to Berlin in the autumn of 1910. The line consists of a double circuit from Niagara Falls to Dundas—where the main interswitching station is located. From Dundas Station three lines radiate out—a double circuit line to Toronto, a single circuit line northerly to Guelph, Preston, Berlin and Stratford; a single circuit line westerly to Woodstock, Ingersoll, London and St. Thomas. These two latter lines are now single circuits but the towers are capable of



carrying a double circuit. In addition to these lines a single circuit tower line connects Stratford via St. Mary's with London, thus completing a loop around Western Ontario. Transformer stations are built in each town or city and the current stepped down from 110,000 volts to that required, also pole lines radiate out from different stations at a voltage of 13,200 to smaller villages, etc. The total length of the high tension lines is over 300 miles and with the proposed Windsor extension will be over 400.

The Ontario government has appointed a commission of three to act as a holding body for the municipalities.

The accompanying cuts illustrate the construction of the towers.

