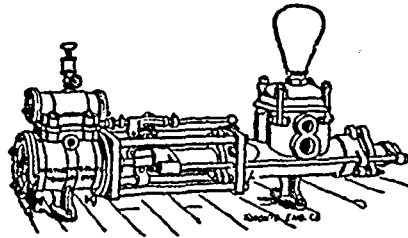


**Saw Mill Machinery,
Northey's Steam Pumps,
Grain Choppers,**

Waterous Engine Works Co.,

WINNIPEG, MAN.

**Engines and Boilers,
Saw Mills.**



Wm. Ferguson,

—WHOLESALE—

Wines, Liquors and Cigars

8th Street, Brandon.

LYMAN BROS. & CO.,

WHOLESALE

DRUGS AND MEDICINES

Every requisite for the Drug Trade
promptly supplied.

TORONTO, ONT.

P.A.I.N.T.

Get ready for Trade.

Stock up with —

RAMSAY'S

**RUSSIAN PURE LEAD.
UNICOEN MIXED PAINT.
UNICOEN OIL STAINS.
COLORS IN OIL.
VARNISHES, Etc., Etc.**

W. G. McMAHON, Winnipeg,
Representative for Manitoba.

A. RAMSAY & SON.,
MONTREAL.

STUART & HARPER

AGENTS FOR

Stratford Mill Building Co.

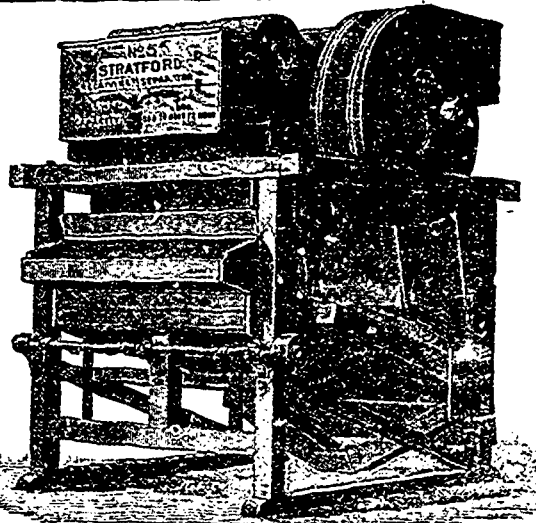
Flour Mill and Elevator Machinery

Dustless Warehouse and Elevator
Separators

Dodge Wood Pulleys

New and Second-hand Machinery
of all kinds.

758 to 764 Main Street,
Winnipeg.



Cigars

Made in your own Country.

HISPANIA, RED CROSS, KHEWEE

Try these Brands. They are Unsurpassed.

BRYAN & LEE, Winnipeg.

Andrew Allan, President. John McKechnie, Supt.
F. H. Brydges, Vice-President. W. R. Allan, Sec. - Treas.

THE VULCAN IRON COMPANY,

OF MANITOBA LIMITED

MILL ROLLS GROUND & CORRUGATED.
Architectural Iron Work.

ENGINE AND BOILER WORKS,

GENERAL BLACKSMITHING.

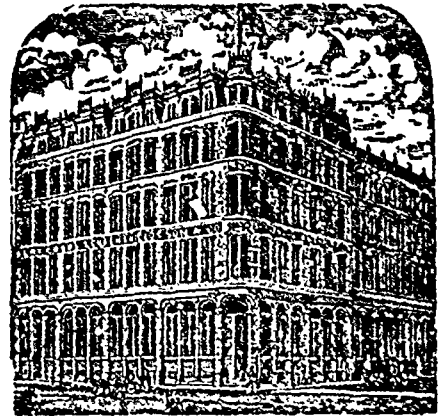
BRIDGE BUILDING A SPECIALTY.

TENDERS SOLICITED.

POINT DOUGLAS AVE., WINNIPEG.

S. Greenshields Son & Co.

MONTREAL AND VANCOUVER, B.C.



We are offering for Spring Delivery the
following special lines:

Grams' Prints. Tokio Pongees.

Priestley's Waterwitch Serges, Cravenottes,
Coutilles, Lustres & other Mohair Effects.

Harrison's Brussel's Carpets.

Also a very large range of COTTON GOODS.

Samples with C. J. REDMOND, Room 18,
McIntyre Block, Winnipeg.

McMASTER & CO.,

—WHOLESALE—

**Woollens, Tailor's, Trimmings,
CARPETS,**

AND GENERAL DRY GOODS.

TORONTO, ONT.

REPRESENTED BY E. C. S. WETMORE.

JAS. McCREADY & CO.,

WHOLESALE

**Boot and Shoe Manufacturers,
MONTREAL**

W. WILLIAMS, AGENT.

SAMPLE ROOM—Room M, McIntyre Block,
MAIN STREET, WINNIPEG.

M. and L. Samuel Benjamin & Co.,

26, 28, 30 FRONT STREET, WEST.
TORONTO

* Shelf and Heavy Hardware,

* Metals, Tin Plate, etc.

* Lamp Goods and Gas Fixtures.

Plumbers and Steam Fitters' Supplies

Special attention given to import and
export trade.

English House: Samuel Sons & Benjamin,
161 Fenchurch St., London, E.C.