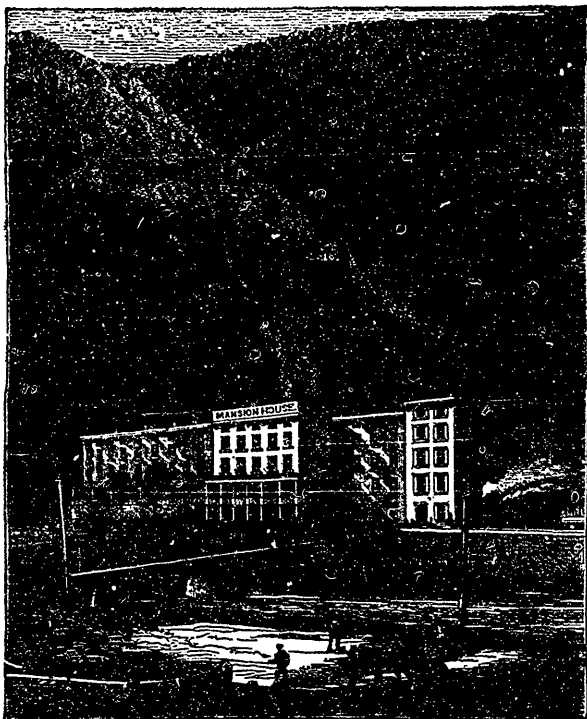


space for gardens except what the owners can manage to snatch from the hillside above their heads. As proof of what can be done in a narrow space, this quaint and really Swiss-like village affords a capital example.



MANSION HOUSE, MAUCH CHUNK, PENN.
Central Railroad of New Jersey.

Alighting for the first time in this romantic spot, where the enterprise of man has engirded with railroads and canals the wildest mountain solitude, one knows not whether first to bow in awe at nature's majesty, or exclaim with delight at the triumph which engineering skill has achieved in rendering it so easily accessible to the outer world; for this narrow gorge, through which the Lehigh, through ages of solitude, plashed its way to the sea, now furnishes an avenue also for two railroads, a canal, and at this point a village street, all crowded into this narrow