

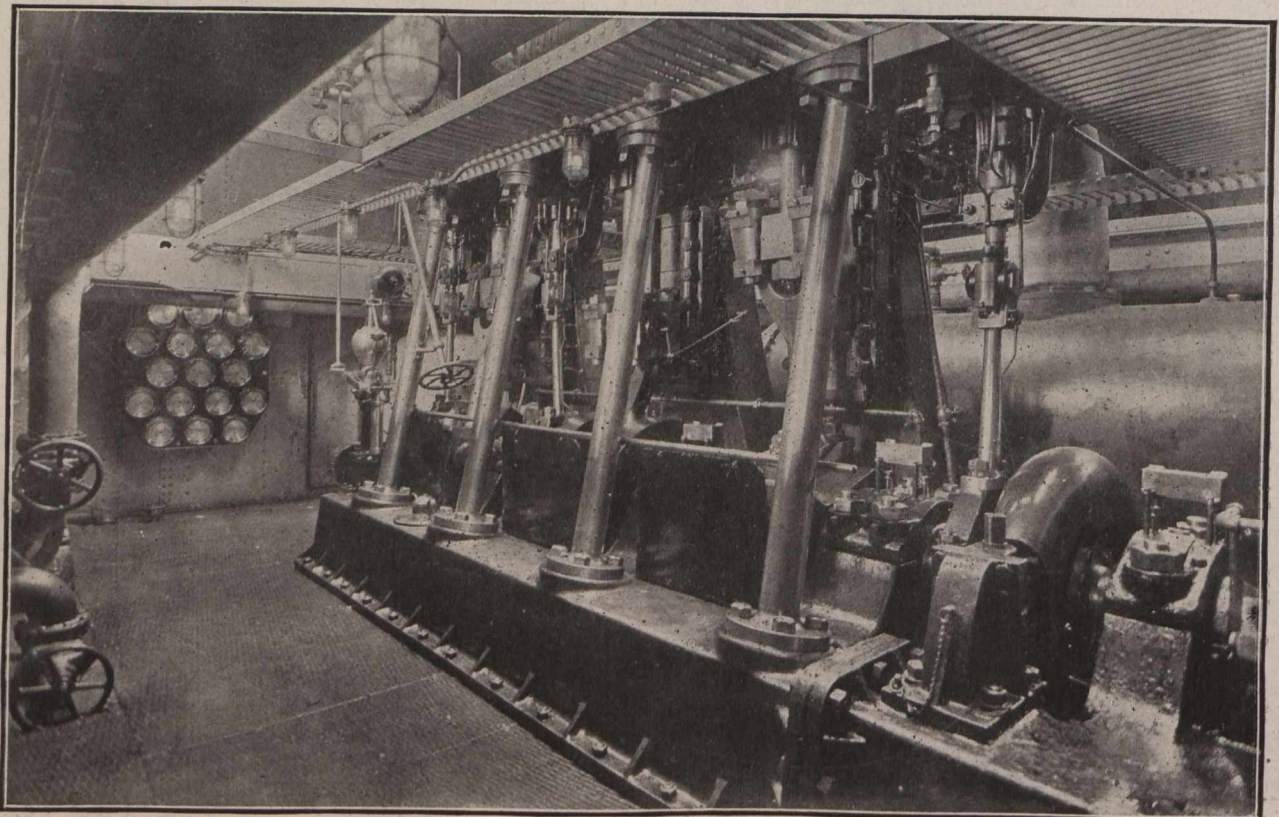
Front and Rear Views of Steam Chest of Main Engine—1,750 Indicated h.p.

well illustrated by the operations of the "Cyclone" during the month of June, which averaged 1,300 cubic yards of material per hour for the entire month, depositing at an average distance from the point of suction of one-half mile.

Both dredges being identical in design and equipment the following description applies equally to each. The illustrations here shown are of the "Cyclone," which started working November 7th, 1914, and is now engaged on the reclamation of the industrial area at the east end of Toronto Harbor. The "Tornado" was not com-

pleted in time to participate in last season's operations, but started work on May 10th, 1915, and is now engaged on reclamation of the park lands on the western portion of the development, near the mouth of the Humber River.

The hulls and deck houses on each dredge are constructed of steel and were built by the Polson Iron Works, Limited, at Toronto. The hulls are 170 feet in length, have a beam of 42 feet with a maximum depth of 12 feet 4 inches at the centre and mean draft of 7 feet; they have seven watertight compartments, besides which each of the pump rooms, engine room, boiler room and spare coal



Lower Portion of Main Engine of the Dredge "Cyclone."