

GOLDIE CORLISS ENGINES

Illustration Shows

THE POWER HOUSE of the new GRAND TRUNK shops at STRATFORD, ONT. Equipped with two CROSS COMPOUND GOLDIE CORLISS STEAM ENGINES. Direct connected.

The GOLDIE & McCULLOCH CO., Limited GALT, ONTARIO, CANADA

WESTERN BRANCH
248 McDermott Ave., Winnipeg, Man.

QUEBEC AGENTS
Ross & Greig, Montreal, Que.

B.C. SELLING AGENTS
Robt. Hamilton & Co., Vancouver, B.C.

WE MAKE

Wheelock Engines, Corliss Engines, Ideal Engines, Gas Engines and Producers, Boilers, Heaters, Tanks, Steam and Power Pumps, Condensers, Flour Mill Machinery, Oatmeal Mill Machinery, Woodworking Machinery, Transmission and Elevating Machinery, Safes, Vaults and Vault Doors.

ASK FOR CATALOGUES, PRICES AND ALL INFORMATION




ARMSTRONG PLANER TOOLS

Patented May 28, 1901, and
Aug. 19, 1902

This Gang Tool has
finished a nine hour
job in three hours

SAVE
All Forging and
Tempering,
70% Grinding,
90% Tool Steel

ARMSTRONG BROS. TOOL CO.
107 North Francisco Ave. Chicago, U.S.A.
"The Tool Holder People."

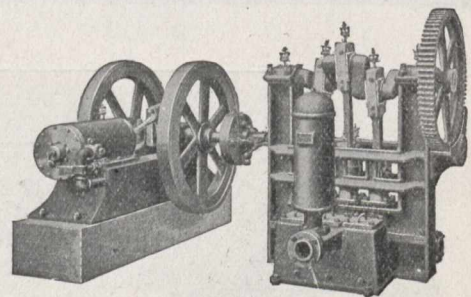
On General Work this Tool is worth a dozen Forged Tools

Catalogue mailed free on request.

The Many Installations of GOULD'S Efficient Triplex Power Pumps

For Municipal Water Works, Boiler Feeding, Hydraulic Elevators, Mine Pumping, General Water Supply, Etc.

Have fully demonstrated their practicability and efficiency for these important services.



GOULDS PUMP CO.

Coristine Bldg., Phone Main 1054

MONTREAL

Works: Seneca Falls, N.Y.

WHEN WRITING TO ADVERTISERS

You will confer a favor on both advertiser and publisher by mentioning this paper.

ICE TROUBLES IN HYDRAULIC POWER WORK AND

METHODS OF OVERCOMING THEM

By JOHN MURPHY

Electrical Engineer, Department of Railways and Canals and
Board of Railway Commissioners for Canada

A Contribution of unusual interest to all engaged in work of this kind. Reprinted from the "Canadian Engineer" of May 1st, 1908.

PRICE 10 CENTS