

You'll  
Need a  
Camera for  
Easter.

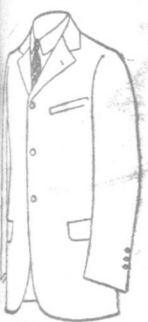
Springtime's here, next week is Easter Week. Snapshots will be more the craze than ever. The camera users will be getting their equipment ready. How about yours? We have in stock all grades and sizes of Cameras suitable for Easter gifts, all the accessories that go with them, and we're here to give suggestion and advice to Camera users.

Get your Camera requirements from

**TOOTON'S,**  
The Kodak Store, 309 Water Street.  
PHONE 131.

**High-Class  
Ready-Made  
CLOTHING  
FOR SPRING**

The Famous Victory Brand Clothing, American and English models, are ready for immediate delivery.



**SPECIAL BARGAINS  
in  
MEN'S SUITS  
AT CLEARING PRICES.  
Order at once. The best Selling  
Line in Newfoundland.  
Suits, Pants, Breeches,  
Overalls  
FOR MEN AND BOYS.**

Our Clothing is cut and made by expert workers and is famous for Style and Fit.

**The White Clothing Co.,**  
LIMITED.  
WHOLESALE ONLY.  
259 DUCKWORTH STREET.

**S. S. CEUTA**

Will leave Montreal direct for St. John's about

**MAY 10th**

For freight rates, apply

WALFORD SHIPPING CO., LTD.,

Agents, Montreal.

**A. H. MURRAY & CO., Limited.**  
AGENTS, ST. JOHN'S.

— BUY —

**AVALON TELEPHONE COMPANY, LTD.**  
7 P.C. Preference Shares.

Participating in Profits  
Tax Exempt.

For particulars, apply to the Company's  
Office, Duckworth Street, St. John's, or to

J. J. MURPHY, Broker.

P.O. Box 579, Phone No. 1073. 51 Power St.

**ko-Russian  
Trade Treaty**

Constantinople, March 22 (A.P.)—  
Turkish and Soviet governments  
announced a trade agreement

whereby freedom of trade, subject to  
custom dues, is allowed between the  
two countries, Turkish traders are  
free to enter Russia at any time and  
to sell their wares to whomsoever  
they please.

WINARD'S LINIMENT FOR COUGHS

**Nfld. at Wembley**

Editor Evening Telegram

Dear Sir—Will you kindly publish  
the enclosed telegram which have  
passed between the High Commission-  
er for Newfoundland and myself as  
Chairman of the British Empire Ex-  
hibition Committee of Newfoundland?

I would add, for information, that  
our committee here has been greatly  
assisted by the London Advisory  
Committee. The London Committee  
had for its Chairman Captain Gordon,  
and consisted of prominent New-  
foundlanders and gentlemen identified  
with Newfoundland, residing in Eng-  
land. Upon them fell the work which  
had to be done in England in con-  
nection with our building and exhib-  
its. Without the assistance of the  
London Advisory Committee, New-  
foundland's part at Wembley could  
not have been so efficiently and econ-  
omically carried out.

Yours faithfully,  
LEONARD C. OUTERBRIDGE.

April 21st, 1924.  
St. John's, Nfld.

To: Victor Gordon,  
Ruralty, London.

Our Committee wishes express high  
appreciation of London Committee's  
work and sends best wishes for suc-  
cess of Newfoundland's exhibit es-  
pecially to you and Davies. Shall be  
glad to hear of opening Exhibition.

LEONARD C. OUTERBRIDGE,  
Chairman.

April 23rd, 1924.  
London.

To: Leonard Outerbridge,  
Chairman Exhibition Committee,  
St. John's, Nfld.

On behalf of self and London Ad-  
visory Committee would thank you  
for your message of twenty-first Ap-  
ril and would like reciprocate kind  
wishes expressed. Our association  
with your Committee has been most  
pleasant and all your work is amply  
repaid by success of opening cere-  
mony at Wembley to-day. Have just  
returned from Wembley after witness-  
ing what was probably one of the  
most brilliant gatherings in the Em-  
pire's history. In the great stadium  
in presence of one hundred thousand  
people His Majesty the King opened  
Exhibition his speech being broad-  
casted all over the country. Much  
fear was expressed that Exhibition  
would not be ready in time and while  
nearly every section is incomplete in  
some details it is true to say that  
whole undertaking is ninety percent  
finished. Without doubt this is the  
greatest exhibition of all time and  
represents faithfully in miniature  
whole British Empire. Newfoundland  
Pavilion is much admired standing  
appropriately on the right hand British  
Government building. Most of  
our exhibits are in place except those  
recently received and while we may  
not compete in grandeur with other  
and richer Dominions and Colonies,  
our pavilion adequately suggests the  
modest dignity of the oldest colony  
and the stability of our people. Davies  
new in charge sends thanks for  
your message. All Newfoundland  
visitors to London were present at  
opening ceremony to-day and at re-  
ception given by Princess Mary,  
Chesterfield House, last evening.  
GORDON.

**Big Change of Bill at  
the Crescent To-Day**

DWYER SISTERS IN ALL NEW  
SONGS AND CLASSIC DANCES.

The Dwyer Sisters, acknowledged  
as the greatest attraction that has  
ever played in the Crescent Theatre  
will be seen to-night in a big change  
of programme consisting of new songs,  
duets and classic dances. These dainty  
artists deserve all the good reports  
that have been said about them for  
they are indeed talented entertainers,  
and we feel confident that their en-  
gagement at the Crescent is going to  
be one of big success.

To-night they will be seen in Buck  
and Wing, Eccentric and Clog Dances.  
At yesterday's holiday show the audi-  
ences went in raptures over their act  
and fairly brought down the house  
by their enthusiasm. Very seldom do  
we see such an act of excellent variety  
as displayed by these talented artists.  
See their programme to-night and you  
will agree that it goes even one bet-  
ter than the opening bill. The Dwyer  
Sisters will appear each afternoon at  
4 and night at 9.

One of the greatest supporting casts  
ever assembled for a single production  
appears with Pauline Frederick in her  
latest R. C. Production "The Glory  
of Clementina" now at the Crescent  
Theatre.

Based on the memorable novel "The  
Glory of Clementina," written by Wm.  
J. Locke, this most recent Pauline  
Frederick starring vehicle is a pro-  
duction of high dramatic quality, the  
theme of which is the rejuvenation of  
a woman, who is an artistic genius.  
She had abandoned everything in her  
pursuit of artistic fame. She had stifled  
every natural instinct within her. But  
the touch of a baby's hand on her  
cheek, the music of a baby's chat, re-  
awakened within her the glory of wo-  
manhood and she wins enduring hap-  
piness in the end.

**Sixth  
Anniversary  
Sale**

**London, New York &  
Paris Association  
of Fashion**

**Sixth  
Anniversary  
Sale**

Just opened, and now ready for your in-  
spection, a new shipment of

**Ladies' Advance Spring and Early  
Summer**

**HATS! HATS! HATS!**

Over 1200 NEW HATS, Ready for Your Choosing  
Authentic in Style, Exceptional in Value

Prices Range

Hats for Women  
Hats for Misses  
Hats for Matron

\$2.48  
up to  
\$8.98

Hats for the BOBBED  
HEAD GIRLS  
Choose from the Latest  
and Smartest Millinery

A Collection affording the widest variety  
to be found, every new Style Effect,  
every new color of the season is repre-  
sented in this MAMMOTH DISPLAY

**Sixth  
Anniversary  
Sale**

**London, New York &  
Paris Association  
of Fashion**

**Sixth  
Anniversary  
Sale**

**Wild Caribou Merging  
With Reindeer in Alaska**

Cantwell, Alaska, March 21 (A.P.)—  
Wild caribou bulls are invading the  
reindeer herds of Broad Pass, and the  
results are beginning to manifest  
themselves in the number of long-leg-  
ged, long-necked calves grazing in the  
herds. Aside from these traits, to-  
gether with the solid color of the car-  
ibou, there is little difference between

pure-blooded domesticated reindeer  
and the caribou.

It is believed that eventually the  
reindeer will be taught to eat grain,  
and thus become a better beast of bur-  
den. In experiments reindeer have  
been taught to eat oats, but they still  
demand moss as a roughage. It is hop-  
ed gradually to accustom the animal  
to other forage until it will accept  
other roughage, and therefore be able  
to travel long distance. At present a  
reindeer is good for but five days as

a sled animal. After that it must be  
released to recover its lost fat on  
moss.

**Sodom and  
Gomorrah Located**

ST. LOUIS, April 18.—The lower  
Dead Sea region of Palestine has  
been scientifically explored for the  
first time and with great success,  
Melvin Grove Kyle, president of the  
Xenia Theological seminary of Mis-

souri and head of the research ex-  
pedition writes from Jerusalem.

The expedition, which acted in co-  
operation with the American School  
of Archaeology of Jerusalem, reports  
the discovery of the old fortress of  
Kif of Moab and the region of Sodom  
and Gomorrah is determined.

Dr. Kyle writes that the mysterious  
rising of the Dead Sea can now be ex-  
plained and the Biblical story of the  
destruction of Sodom and Gomorrah  
is fully confirmed but withholds de-  
tails of his discoveries.

**CARD.  
ALEX BISHOP,  
V.S., B.V.Sc.  
(Veterinary Surgeon)  
Graduate of Ontario Veterinary  
College and Toronto University.  
"AIR ZONE."  
Mundy Pond Road,  
Phone 2017 St. John's.  
mar26.3mos.**