

The Canadian Bridge Co., Limited

Manufacturers

WALKERVILLE, ONT.

Locomotive Turn Tables,
Roofs, Steel Buildings and
Structural Iron Work of all descriptions

RAILWAY AND HIGHWAY BRIDGES

Wood Fibre ^{HARD} ^{WALL} Plaster

White Rock (Hydrated) Lime

MANUFACTURED BY

THE IMPERIAL PLASTER CO., Limited

Dealers in Cement, Lime, Fire Brick, Fire Clay, Plaster Paris.

King St. (West of Subway) TORONTO

MANHOLE COVERS and FRAMES



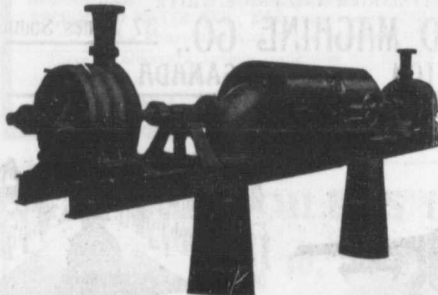
We have several designs and this shows the article in most general use. It is Heavy and Substantial, made from good materials and will stand any strain to which it may be subjected.

Will be pleased to furnish particulars of these, together with

CATCH BASINS, HYDRANTS, CURB BOXES, ETC.

The R. McDougall Company, Limited,
GALT, CANADA.

PUMPS FOR WATER WORKS



WATER WORKS SYSTEMS INSTALLED

**Boilers, (Return Tube and Water
Tube,) Tanks, Penstocks,
Mill Machinery.**

Builders in Canada of

"WORTHINGTON" TURBINE PUMPS

Two Worthington 3-Stage Turbine and McCormack
Water Wheels, built for Port Arthur, Ont., Water
Works, 1440 gal. per minute against 350 ft. head.

The John McDougall Caledonian Iron Works Co.,

Estimates Cheerfully Furnished

HEAD OFFICE AND WORKS: **Montreal.**

Limited.

DISTRICT OFFICES:

MONTREAL, 82 Sovereign Bank Building. TORONTO, 810 Traders Bank Building. WINNIPEG, 251 Notre Dame Avenue
VANCOUVER 416 Seymour Street. NELSON, Josephine Street. NEW GLASGOW, N.S., Telephone Building.