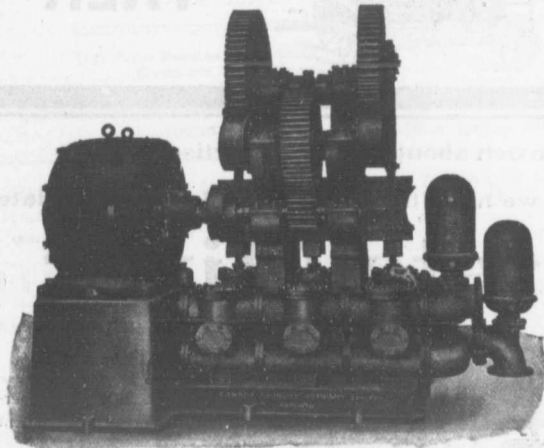


# Triplex Power Pumps

Belted or Direct-Connected to  
Electric, Steam or Gas Motors



Highly recommended where a constant delivery of water under pressure is desired.

All styles and sizes for all duties.

A full line of water-works' supplies carried in stock.

Write for Catalogue.

C. G. E. Motor Direct-Connected to Double Acting Triplex Pump.

## CANADA FOUNDRY CO., Limited

Head Office and Works: TORONTO, ONT.

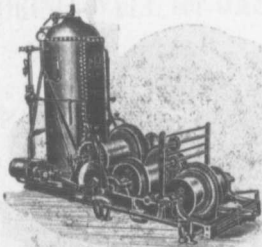
District Offices: MONTREAL HALIFAX OTTAWA WINNIPEG VANCOUVER ROSSLAND

## M. BEATTY & SONS, Limited

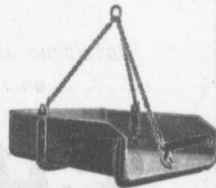
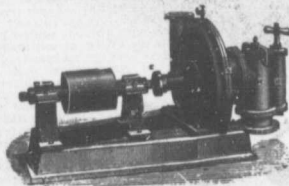
WELLAND, ONTARIO

Manufacturers of

DREDGES, DITCHERS, DERRIGKS AND STEAM SHOVELS



- MINE HOISTS.
- HOISTING ENGINES.
- SUBMARINE ROCK DRILLING MACHINERY.
- STONE DERRIGKS.
- CLAM SHELL BUCKETS.
- STEEL SKIPS.
- COAL AND CONCRETE TUBS.



CENTRIFUGAL PUMPS for water and sand.

AGENTS: E. LEONARD & SONS, MONTREAL, QUEBEC, ST. JOHN, N. B., AND CALGARY, ALTA.  
THE STUART MACHINE CO., WINNIPEG, MAN.; THE WM. HAMILTON MFG. CO., VANCOUVER, B. C.