



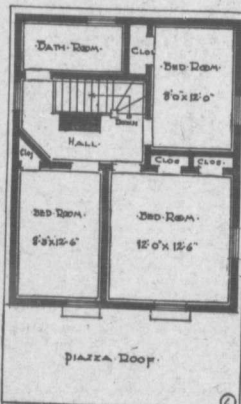
A Clever Little House

A NOTED architect, writing recently on the faults and mistakes of home builders, said: "Most home builders think they require about twice the room that is really necessary to house their families comfortably. A well-designed house can be at once small and roomy."

Here is such a house, with accommodation for four or possibly six persons. It will be noticed at once that the gloomy company parlor, where poor unoffending guests used to be ushered off to sit in state has been omitted, and a very large and homey combination dining and living room substituted. It is a delightful room, full of possibilities for the homemaker, with the windows cleverly arranged so that no direct sunlight is shut off by the wide front porch, and yet the most complete ventilation achieved.

A Convenient Kitchen.

From this room a door opens into the kitchen, which is so designed that the furniture can be most conveniently grouped to save labor. The stove should be placed to the left of the cellar door, so that it will enter the chimney used for the grate with the least waste of pipes. The cupboard should be built or placed along the wall between the living room and kitchen, and the sink or work table beneath the window nearest to the door between the two rooms. This arrangement will be found to save a great mileage in steps, and, together with the cellar stairs leading directly from the kitchen, this should be



found to be a most convenient place to work.

The Architect's Description.

For the man who desires something a little more permanent and commodious than the bungalow, and yet does not care to assume the expense of a large house, the design here is as nearly perfect as can be found. Medium in size (being only 22 feet by 28 feet), it contains all necessary to make the ideal home.

The exterior should be built of novelty siding for the first story and shingles laid eight inches to the weather for the upper. The roof should be shingled in the usual manner with wood, metal or asbestos.

Make the lower ceiling 8 feet 6 inches and the upper 8 feet, and the rooms will be about right. Build the fireplace of rough brick, and on no account consider omitting it, for it is the soul of the house. Stucco may be used in the place of siding, and wall board may be substituted for plaster if desired.

While it is impossible to set a definite price at which such a house can be built, owing to the wide field covered by Farm and Dairy, and the very different conditions in which our readers are placed it is estimated that a fair average cost for this house, fitted with furnace, would be \$2,000.

Working Drawings, \$1.50.

Complete working drawings for the construction of Farm and Dairy House No. 6, together with complete bill of materials and instructions for building, will be mailed to any address for \$1.50.

Cheaper than Plain Macadam—

TARVIA is always cheaper in the long run to bond a macadam road than water. Sometimes Tarvia as a binder does not add anything to the first cost.

The York County Highway Board, York County, Ontario, built about five miles of Tarvia macadam in 1915 and found it two cents a square yard cheaper than waterbound macadam cost them in 1914.

cadam surface, merely roll down a tarvated macadam and make it smoother. The tarvated surface will not ravel when rain torrents sweep down steep hills.

There are three kinds of Tarvia. "Tarvia-X" is very heavy and dense, used as a binder in road building as in this instance, and the most thorough

Made in Canada

Tarvia

Preserves Roads Prevents Dust—

Such figures are not unfamiliar. The Tarvia displaces a certain amount of stone and reduces the amount of rolling required. The excessive use of water, often difficult to provide, is lessened. The Tarvia often stone which may not make a good road by itself but will give excellent results when there is a Tarvia matrix to prevent internal attrition.

Plain macadam is not fitted to stand the stresses of modern traffic but a tarvated road is automobile-proof. The swiftly driven wheels which disrupt a plain ma-

and permanent of the Tarvia treatment. "Tarvia-A" is a lighter grade, used for hot surfacing applications. "Tarvia-B" which is fluid enough to be applied cold with modern spraying apparatus, is for dust prevention and road preservation.

In addition to the five miles of "Tarvia-X" macadam mentioned above, the York County Highway Board in 1915 constructed one-half mile of the Kingston Road with "Tarvia-B". This is one of the best roads leading out of Toronto.

Booklet on request. Address our nearest office.

THE PATERSON MANUFACTURING COMPANY, LIMITED
MONTREAL TORONTO WINNIPEG VANCOUVER
THE CARRITE-PATERSON MANUFACTURING CO., LIMITED
ST. JOHN, N.B. HALIFAX, N.S. SYDNEY, N.S.

Kennel Road, Scarborough Township, York County Ontario. Tarvia filed Macadam

SEASONABLE HINTS

From the Dominion Experiments' Farms. Bulletin No. 4, March, 1916: "Farmers, and many fruit growers as well, need an annual reminder of the importance of spraying, although the value of thorough spraying has been so often proved that no further proof need be given here. To ensure success which are most beneficial, though in seasons when the apple scab develops late the later sprayings are very necessary."

For early spraying use

SOLUBLE SULPHUR

10-12½ lbs. to 40 gallons of water. For later spraying, when the foliage has developed, use

Soluble Sulphur

1-1½ lbs. to 40 gallons of water. Soluble Sulphur is more efficient and more convenient than the old-fashioned Lime Sulphur.

Arsenate of Lead

Is necessary for codling moth and chewing insects.

Our Arsenate of Lead is the highest grade manufactured.

N.B.—The Bean Pump is the sprayer that beats the world at the Panama Exposition, 1915.

Send for Price List and Catalogue.

NIAGARA BRAND SPRAY CO., Burlington, Ontario

Everything for Spraying: Soluble Sulphur, Lime Sulphur, Arsenate of Lead, Dust Sprays and Dusters, Hand and Power Pumps, and Accessories.

