

OUR FARMERS' CLUB
Correspondence invited

ONTARIO

HASTINGS CO., ONT.

CHAPMAN, April 27.—Spring seeding has just begun and cheese factories are opening for another season. The make of todays cheese will be much smaller than in former years, as some of our farmers are shipping cream and others milk to a cheese factory. Meadows and sod while there is a good demand for, fodder the supply will be sufficient for local needs.—H. E. T.

SINNEY CROSSING, April 27.—Pasture conditions are very good. They have wintered and show little sign of heaving. Frost is out of the ground, but the season is backward. All kinds of clover look fine; red clover seems to be the best two-year-old and promises a good crop, which is something unusual. Timothy hay is selling at \$34 to \$35 a ton; clover, \$11 to \$12; mixed, \$12 to \$13; oats, 600 a bush; barley, 40c; wheat, 80c; middlings, 22c; eggs, 20c a doz. Milch cows sell at \$80 to \$100.—J. K.

TRENTON, April 27.—Farmers have started seeding; land works beautifully, not having been paked by heavy rains. Feed seems fairly plentiful; some are short. Mill feeds are very high. Cattle are looking well. All clovers are excellent; never better. Everything is very satisfactory for bumper crops of every thing.—J. K.

NORFOLK CO., ONT.

HEMLOCK, April 23.—The weather is fine and warm, interspersed with occasional lake breezes. Land in good condition for farming. On the whole business is brisk. Hog \$9; eggs, 20c; butter, 25c. All stock prices are very high. Cattle in different vocations; some are pasturing on fruit trees. We have 400 acres planted with fruit trees. We have a lot of men doing general farming. All stock came during the winter in good condition.—P. B. F.

MIDDLESEX CO., ONT.

LILBERTON, April 23.—Seedling is in full swing. We have had a little rain, which was badly needed. It still remains cold and not much growth and fall wheat; the latter is looking good, depending the weather. Quite a number of farmers are raising more calves this year owing to the Americans having closed our district out, and the prices are good—\$6 to \$10 for calves, two or four weeks old.—W. H.

BASKATCHEWAN

QU'APPELLE DIST., SASK.

PORT QU'APPELLE, April 21.—Since writing before the weather changed, breaking again the beginning of April with frosts at night. Spring birds started April 1st. First land was worked April 13th. The weather is now warm and there has been considerable seeding done. There is a good seed bed but we are having a great deal of drying winds.—E. H. G.

BRITISH COLUMBIA

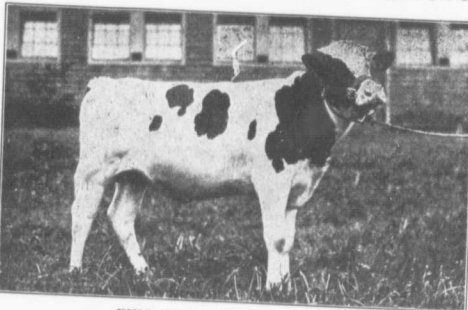
NEW WESTMINSTER DIST., B.C.

CHILLIWACK, April 23.—March, up to the 20th, was very fine and warm, followed by a serious frost which caught early fruit blooms. April has been showery. Vegetation has made rapid growth, pastures is abundant and cows are doing their best. McLaren's Laurentia 2613, taken at Clayburn is in operation, which takes care of the surplus of milk. Seeding is well advanced. Meats of all kinds call. Washington potatoes being sold in Vancouver, despite a surplus of local, many of which will only go to waste. Good dairy cows still maintain strong prices. Twenty-eight grade Holsteins sold at Auction today averaged \$172.50; highest cow, \$265; 12 went over \$200.—U. F. P.

ANOTHER H.-F. RECORD

Editor, Farm and Dairy.—I am advised through partial preliminary reports that Holstein-Friesian heifer FINDERNE (Hulliger Payne, No. 14665) has broken the record for fat production in the world in a three-year class of the seven-day division, by producing in seven consecutive days 28.96 lbs. fat from 607.9 lbs. milk, months 14 yrs. Her sire is King Heron, owned by Hugh Payne, No. 11904. Her dam was bred and is now owned by Mr. Bernard Meyer, FINDERNE, N.A. In the three-year class of the seven-day division she displaces FINDERNE Pieterse (No. 12505), whose record for seven days is 28.164 lbs. fat from 678 lbs. milk.—Malcolm H. Gardner, Sup't A. R.

The Best that the Breed Affords—



50 Proven Producers by the R. O. M. Route

W 50 W I The O L Kind R L That W K I Make E N Good R For S

KING SEGIS PONTIAC POSCH

FAIRMONT NETHERLAND POSCH, his dam, has 1500 lbs. butter to her credit at 3 years.

IN CANADA OR THE UNITED STATES

FOR ONE DAY ONLY—MAY 26th, 1914

MANOR FARM COMPULSORY SALE

The Great Sires of the breed are well represented in the females we offer you. Many of these high priced females will never bring their original cost—but my Farm is sold and Every Animal in the Catalogue is Get one from **JOHN J. RAE, Sales Manager** Canadian Holstein Pedigree Co. **COL. B. V. KELLY** Auctioneers **COL. R. E. HAEGER** Algonquin, Ill. **GORDON S. GODERHAM, Manor Farm, BEDFORD PARK, ONT.** N.B.—Manor Farm is reached by Trolley from North Toronto.

FOR SALE—Iron Pipe, Pulleys, Belting, Rails, Chain, Wire Fencing, Iron Posts, etc., all sizes, very cheap. Send for list stating what you want.—The Imperial Waste and Metal Co., Dept. F. Q., Queen Street, Montreal.

Say

"I saw your ad in Farm and Dairy" when you write Advertisers. Then you get full benefit of our absolute Guarantees.

You save time and money

on every cent of your harvest, with the aid of a

LOUDEN Junior Sling Carrier

Patented Brace Block

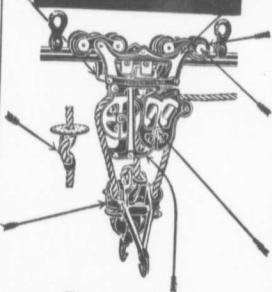
A heavily ribbed malleable iron block attaches to the truck arms just below the track, and the bolt connecting the sides of the carrier frame passes through the lower end. This kills all strain of the bolt and increases the strength of the truck arms. No lead can spread them.

Adjustable Trip

Used when desired to carry the load into the snow without elevating to the track. Slip it up or down on the centre draft rope as desired. A simple, effective adjustment without complicated parts. This trip is supplied when ordered without extra charge.

The Great Triple Purchase Feature

These ropes lifting the load instead of two; as with the ordinary carrier; gives the horse one-half more power, reduces the strain on the ropes and lengthens the life of the outfit.



Sure to Work

A trip stirrup extends below the carrier frame and attaches to the locking mechanism. It is impossible to keep the horse going on the draft rope and not bring the sling pulleys in contact with the trip stirrup. Once this is done the car is bound to leave the stop block and run back into the barn with the load. Side winds or uneven loads, cannot affect the proper working of the LOUDEN JUNIOR SLING CARRIERS.

Write for catalogue and special descriptive circular dealing with above Carrier.

LOUDEN MACHINERY CO., Dept. 32, GUELPH, Ont.
HAY TOOLS, FEED AND LITTER CARRIERS, STABLE EQUIPMENT, BARN DOOR HANGERS.

Engine Trucks

Distribute the load well along the track, increase the strength of the carrier and cause the load to run more steadily. No four-wheeled carrier, however much spread out, is so easy on the track or runs so steadily.

Short Truck Arms

The Truck Arms are only 5 inches long, nearly straight and extremely well laced. They cannot be sprung.

The Unbreakable Axle

These Axles are simply an extension of the main frame. Note how they are shouldered out at the frame; impossible to break them. No riveted or bolted pin axles are used on Louden Carriers. Such axles are always changing trouble.

Patent Bushings

The Pulley Sheaves run on Patent Bushings, recessed into the side of the frame. This takes all the strain off the bolt and puts it on the frame where it belongs. The sheaves are large, of extra strength and easy running.