

Wheat Growing in Northern British Columbia

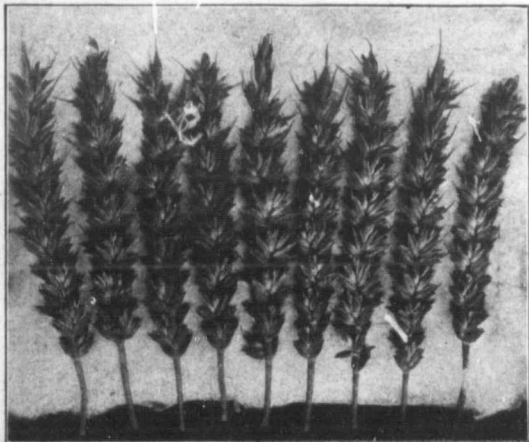
MR. John Kennedy, of the United Grain Growers, who has recently completed a tour through Northern British Columbia, brings the following particulars which will be found of special interest to our readers:

"The sample of wheat (of which a photographic reproduction is given on this page) was secured at Fort St. James, which is situated at the head of Stuart Lake, B. C. Fort St. James is 40 miles north of Vanderhoof on the Grand Trunk Pacific, about 60 miles west of Prince George and a little over 300 miles east of Prince Rupert. There is a good car road from Vanderhoof to Fort St. James and a splendid belt of land all along the Stuart

Homesteads

I understood all this land will be open for homestead at an early date. It is already surveyed, and no doubt a branch of the Grand Trunk Pacific will tap this country from Vanderhoof in the near future. I was informed that the P. & G. E. Railway from Vancouver is likely to change its routing from that to Prince George, going through Ootsa and Lake Francois, which is on the south side of the Grand Trunk, going up there to the Peace River on the lines just outlined.

"Fort St. James being situated at the head of Stuart lake, is bound to become a central point, because of its being at the head of a great waterway through



Note that part of the centre heads are twelve rowed. The wheat is Marquis. The wheat was grown by the Hudson's Bay agent at Fort St. James.

river, which empties Stuart lake into the Nechako river.

Mr. Kennedy says: "I made a survey 20 miles north of Stuart lake and found the same kind of land continuing, and from information I gathered from trappers, miners, survey men and Hudson Bay men this kind of land continues for probably 100 miles north of that, and then reaches the head waters of part of the Peace river, which I believe contains much good land all the way down to the Peace River settlement.

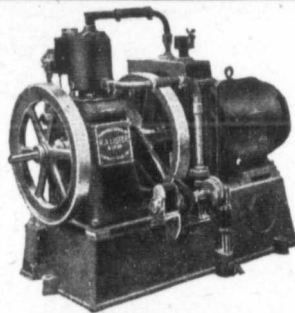
"I believe all this district will grow such wheat as is shown here. There is very little open land indeed, but there is much of it that is easily cleared, being burned over some few years ago and is now covered with white poplar and some spruce. Much of the poplar is small, and in many places there are small openings here and there over the district.

lakes and rivers up many miles into the country. Stuart lake is between 40 and 50 miles long, seven or eight miles wide, full of fish of many kinds of the highest quality—rainbow trout, grey trout, sturgeon and whitefish. I caught some of the rainbow trout myself.

"It has many valuable timber limits with splendid timber and miles and miles of poplar, white poplar and spruce. The country north of there is rich in mineral, and many trappers are making from \$2,000 to \$5,000 a year in trapping fur. Fort St. James is quite a stirring place and is a Hudson's Bay post with quite extensive buildings and cultivating much land. There is also an Indian village situated there with a large number of inhabitants on the east side of the Hudson's Bay post and on the west side of the company's post is situated an Indian mission with church and large schools.

One to
Four
Cylinders

STARTS
ITSELF



Direct
Connected

STOPS
ITSELF

Lister-Bruston Automatic Electric Lighting Plants

ECONOMY is not determined by the purchase price, but the measure of the service rendered. Lister plants, as part of the standardized equipment of the British Army, operating under adverse conditions, used minimum quantities of fuel and oil.

RELIABILITY. The reliability of Lister plants is a built-in quality that can only be explained by thoroughness of manufacture and exclusive patented features. They rendered signal service on the British merchant ships throughout the war and through their dependability saved many lives.

OPERATION. The plant is completely automatic. When the batteries are low the engine starts and continues until they are fully charged. The only attention required is the provision of fuel and oil.

ALSO SMALLER BELT-DRIVEN LIGHTING PLANTS

Write for illustrated catalogue "T" and for information on any of the following lines:

Lister Engines; Grinders; Milking Machines; Sawing Outfits; Threshing Machines; Melotte Separators; Pumps; Power Pumping Outfits.

R. A. LISTER & CO. (Canada) Limited
WINNIPEG



Prepare for Winter NOW—

Buy your Boy's and Girl's
MOCCASINS EARLY

See they bear the reliable and well known **NORTHLAND BRAND** on the Sole of Each Pair



SOLD AT ALL GOOD STORES
THROUGHOUT THE WEST

Northland Knitting Co., Limited

MANUFACTURERS OF

Men's, Women's and Children's
Sweaters, Mitts, Gloves and
Moccasins.

