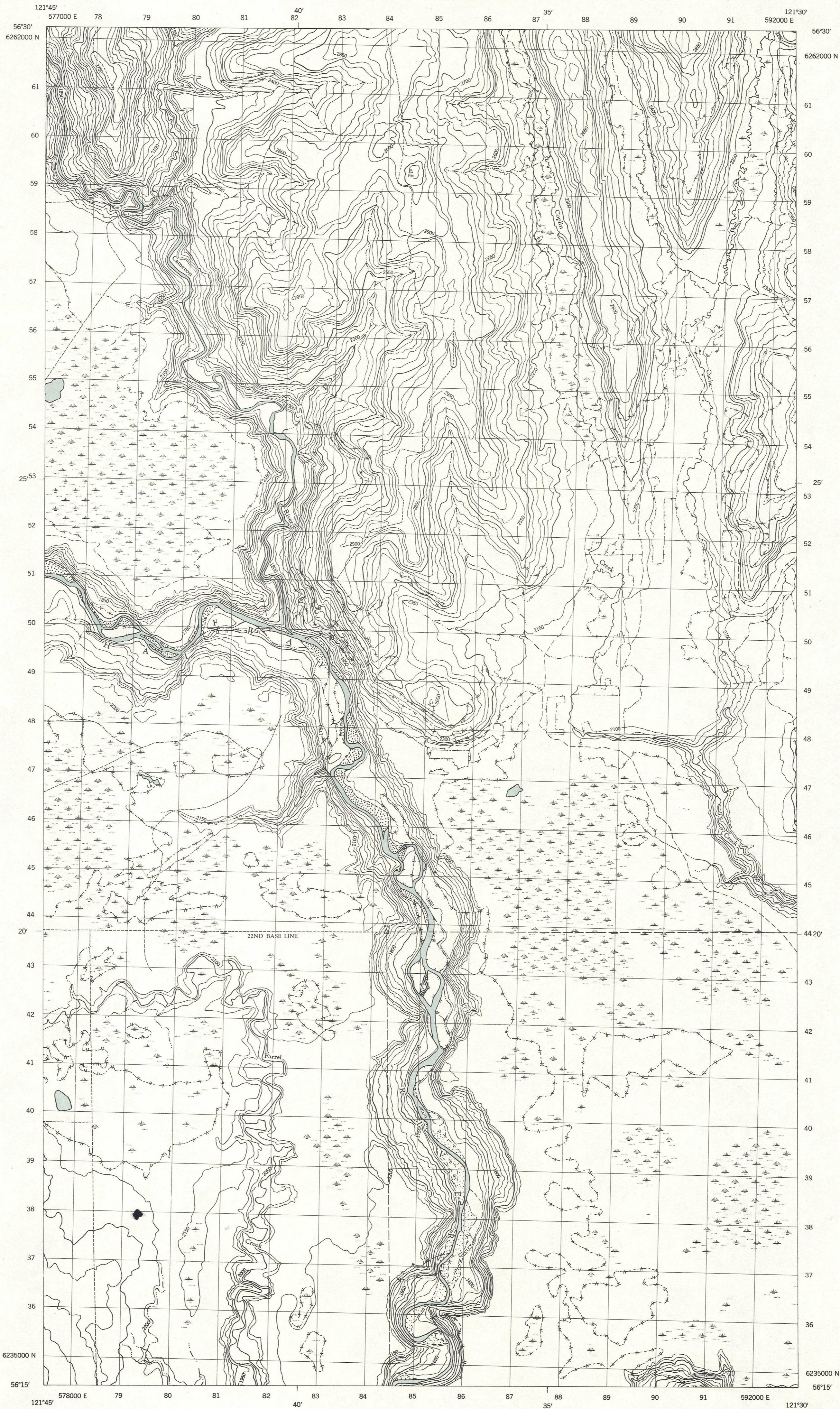


DEPARTMENT OF NATIONAL DEFENCE
ARMY SURVEY ESTABLISHMENT

First Edition

94 A/5 EAST



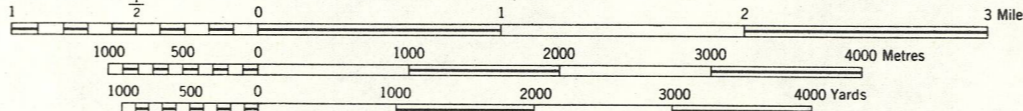
Produced By The Army Survey Establishment, R.C.E. 1957

Users noting errors or omissions on this map are requested to mark hereon and forward to Commanding Officer, Army Survey Establishment, Ottawa. Maps will be replaced if desired.

REFERENCE	
Roads: - hard surface, all weather - hard surface, all weather - loose surface, all weather - loose surface, all weather - less than 2 lanes - less than 2 lanes - Cart Track, Trail - Cart Track, Trail	Boundary, International - Province - County or District - Township or Range - City or Town - Reservation, Indian, Military, etc - Power Transmission Line - Telephone or Telegraph, weak tower - Horizontal Control Point - Boundary Marker - Bench Mark - Spot Elevation, (in feet) - Mine or Pit

GROUND BIRCH
BRITISH COLUMBIA

Scale 1:50,000



CONTOUR INTERVAL 50 FEET

PROVISIONAL MAP

Subject to Correction

REFERENCE	
House, Building - School - Church - with conspicuous Tower or Spire - Post Office - Tower, Radio Mast, Lookout, etc - Rocky Ledge - Quarry - Sand or Gravel Pit - Cliff - Cutting - Embankment - Dry River Bed	Lighthouse - Wharf or Pier - Foreshore Flats - Swamp or Marsh - Lake or Pond, intermittent - Glacier or Snowfield - Stream, intermittent, indefinite - Irrigation Canals, Ditches - Inundated Land, seasonal - Contour, elevation - Depression - Orchard - Forest, unclassified, Scrub

SUPERSEDED
EDITION