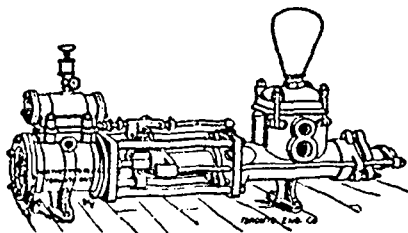


## Waterous Engine Works Co.,

WINNIPEG, MAN.

**Engines and Boilers,  
Saw Mills.**

**Saw Mill Machinery,  
Northey's Steam Pumps,  
Grain Choppers,**



**We are HEADQUARTERS for**

To Dealers who want  
nice **CLEAN GOODS**  
at **ROCK-BOTTOM**  
**PRICES**, communi-  
cate with us.

Brooms, Whisks, Brushes, Wooden-  
ware, Matches, Cordage, General  
Store Supplies, Fancy Goods, Toys  
and Games, Sporting Goods, Glass and  
Chinaware.

## H. A. NELSON & SONS,

MONTREAL - AND - TORONTO.

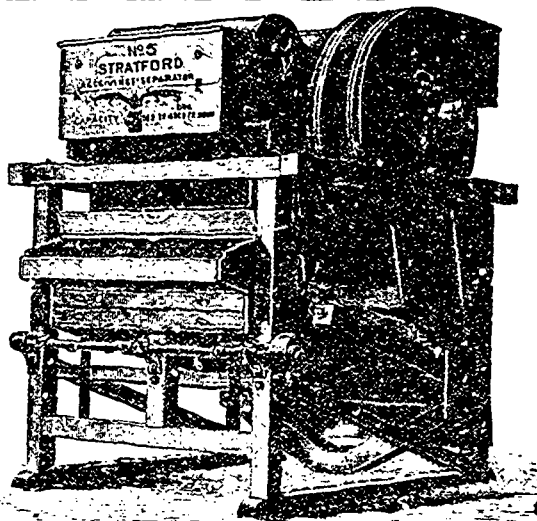
Represented in Manitoba and British Columbia by MR. W. S. CRONE.

## STUART & HARPER

AGENTS FOR

Stratford Mill Building Co.  
Flour Mill and Elevator Machinery  
Dustless Warehouse and Elevator  
Separators  
Dodge Wood Pulleys  
New and Second-hand Machinery  
of all kinds.

758 to 764 Main Street,  
Winnipeg.



## Cigars

Made in your own Country.

HISPANIA, RED CROSS, KHEVIVE

Try these Brands. They are Unsurpassed.

— BRYAN & LEE, Winnipeg.

Andrew Allan, President. John McKechnie, Supt.  
F. H. Brydges, Vice-President. W. B. Allan, Sec.-Treas.

## THE VULCAN IRON COMPANY,

OF MANITOBA LIMITED

MILL ROLLS GROUND & CORRUGATED.  
Architectural Iron Work.

## ENGINE AND BOILER WORKS,

GENERAL BLACKSMITHING.

BRIDGE BUILDING A SPECIALTY.

TENDERS SOLICITED.

POINT DOUGLAS AVE., WINNIPEG.

## S. Greenshields Son & Co.

MONTREAL AND VANCOUVER, B.C.



We are offering for Spring Delivery the  
following special lines:

Crums' Prints. Tokio Pongees.

Priestley's Waterwitch Serges, Cravenottes,  
Coutilles, Lustres & other Mohair Effects.

Harrison's Brussel's Carpets.

Also a very large range of COTTON GOODS

Samples with C. J. REDMOND, Room 18,  
McIntyre Block, Winnipeg.

## McMASTER & CO.,

—WHOLESALE—

Woollens, Tailor's, Trimmings,

CARPETS,

AND GENERAL DRY GOODS.

TORONTO, ONT.

REPRESENTED BY E. C. S. WETMORE.

## JAS. MCCREADY & CO.,

WHOLESALE

Boot and Shoe Manufacturers,  
MONTREAL

W. WILLIAMS, AGENT.

SAMPLE ROOM—Room M, McIntyre Block,  
MAIN STREET, WINNIPEG.

## M. and L. Samuel Benjamin & Co.,

26, 28, 30 FRONT STREET, WEST.  
TORONTO

\* Shelf and Heavy Hardware,

\* Metals, Tin Plate, etc.

\* Lamp Goods and Gas Fixtures.

Plumbers and Steam Fitters' Supplies

Special attention given to import and  
export trade.

English House: Samuel Sons & Benjamin,  
161 Fenchurch St., London, E.C.