

A LARGE VENEER MACHINERY PLANT.

One of the prettiest towns in Ohio is Painesville, magnificently situated on the banks of the Grand River, which winds its way in a picturesque manner through the town. The parks, public buildings and monuments are all tasteful. The great machinery plant of the Coe Manufacturing Company is one of the sights of the place.

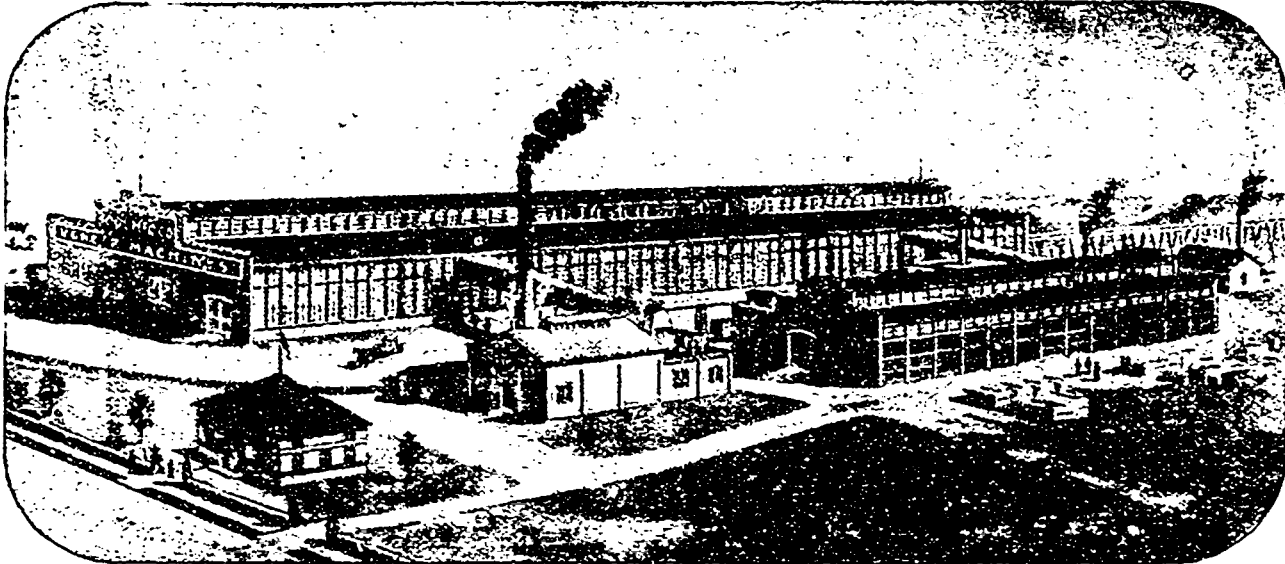
When our representative called the works were running full blast. Mr. Coe took him in hand, and a thorough inspection of the works resulted therefrom. "A great big business" is written largely all over the place, with business-like people and business-like methods.

The works are new and magnificently located, with

The veneer-drying apparatus devised by this concern is as near perfection as human ingenuity can bring it. We give a view of their automatic veneer-drying machine, which consists of a series of iron rollers incased in a rectangular-shaped box, properly geared and driven by a shaft running the entire length of the box. With it is a hot blast fan engine for driving the fan and an independent engine for driving the machine itself. Thus arranged the apparatus can be operated at night economically, only live steam being required as a power.

The Coe Company have their own natural gas wells on the premises, drawing the fuel from the bowels of the earth. The supply seems inexhaustible. Their office building is among the finest to be found, finished

feet long, and will have a holding capacity of over one and a quarter million feet of lumber at one time. The kilns will be quite a novelty from the fact that they will be absolutely fire-proof, all walls being of brick and the roofs of tile, with brick and steel supports as an under construction upon which steel cars operate. The Pullman Company have had years of experience with various makes of kilns and now, we are advised, propose to abandon all other methods, giving precedence to the Morton moist air kiln; consequently the A. H. Andrews Company, who manufacture and sell the Morton kiln, should feel highly complimented. However, as the Andrews Company have spent years of labor and thousands of dollars in bringing the Morton kiln to its present state of perfection, they are certainly entitled



GREAT VENEER MACHINERY PLANT OF THE COE MANUFACTURING COMPANY, PAINESVILLE, OHIO.

private tracks of the B. & O. Railway running through the yards, having connection with the Nickle Plate and Lake Shore railway systems. The factories are situated on the high plateau overlooking the river.

The Coe Manufacturing Company have their own electric lighting plant, also a plant for heating and ventilating the entire works. They have one of the largest and most complete plants devoted to the manufacture of veneer cutting machinery in existence, all well lighted. About thirty of the veneer machines were to be seen in various stages of manufacture. Our representative counted seven "dryers" in process of construction as he entered the works. Machines are here, belted ready to do demonstrative cutting of veneers. The works are equipped with all the latest appliances and tools used in the various lines. About 500 tons of finished parts are carried in stock in case of repair work, which can be shipped immediately.

The Coe Manufacturing Company's recent shipments to Canada included plants for the Algoma Commercial

and furnished throughout in veneers. "We use immense quantities of maple," said Mr. Coe, "and I suppose we will eventually have to go to Canada for our supply of this wood."

The experience of the Coe Company is that good machinery and good advertising is what makes an invincible combination. The company believe in steady, liberal advertising. As one put it, "It is just as much of a mistake to advertise only part of the time as it would be to make good machinery only part of the time." The Coe Company have a good thing, for they make the very best machinery, and that is too patent a fact not to let it become known.

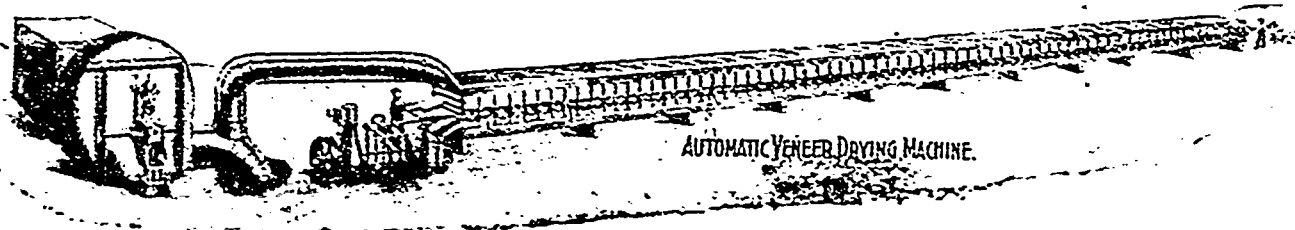
EXTENSIVE DRY KILN PLANT.

The name "Morton" as associated with dry kilns for drying lumber, etc., has become very familiar to lumbermen and manufacturers of forest products during

to a just reward, and we wish them a continuance of the popularity which their kiln is now enjoying. The A. H. Andrews Company are located at 305 Wabash Avenue, Chicago, Ill. Such of our readers as are interested in dry kiln matters are requested to write to the company for a catalogue, as they desire all interested parties to have same on file even if they are not ready to negotiate for dry kiln apparatus. They will gladly send fac-simile copies of testimonial letters to persons wishing to learn the opinion of others as to their kiln.

NEW MILL OF THE LILLCRAP, TATE LUMBER COMPANY.

The Lillicrap, Tate Lumber Company have just completed the erection of a new saw mill at Lakefield, Ont. It is a circular mill with a capacity of from 25,000 to 30,000 feet per day. The machinery was manufactured and installed by the William Hamilton Manu-



AUTOMATIC VENEER DRYING MACHINE MANUFACTURED BY COE MANUFACTURING COMPANY.

Company at Sault Ste. Marie and the Aptus Veneer Company at West River, N.B. The capacity of the Coe plant is 2,000 tons, and when our representative called they were working on orders for machinery aggregating 300 tons. A very large staff of skilled mechanics is employed. The ventilating apparatus in the buildings is arranged so that hot air in winter or cold air in summer is circulated throughout. Running around the works, high vertical, was a powerful crane and conveyor, for the purpose of moving or shipping the machinery. The view of the plant we present herewith is a very good one, but it does not show the bustle and activity going on in the vicinity.

the past few years, during which period the Morton kiln has been adopted by some of the largest manufacturers in the United States, which certainly indicates a bright future. One of the greatest compliments paid the Morton kiln was when the Allis-Chalmers Company selected it for their new mammoth plant at Milwaukee for drying their pattern stock. In addition to this comes information that the Pullman Company have decided to install a battery of 20 Morton moist air dry kilns in connection with their great manufacturing industry located at Pullman, Ill. These kilns will all be about 80 feet long, and range in width from 18 to 40 feet, which will make a continuous line of kilns about 500

feet long, and will have a holding capacity of over one and a quarter million feet of lumber at one time.

The mill is built on concrete foundations throughout. It is 30 x 84 feet and 16 x 26 feet, with stone boiler and engine room 25x36 feet. The plant comprises the usual equipment of steam niggers, live rollers, trimmers, slab saws, etc. The saw carriage is of the newest design. The saw dust is disposed of by means of a Dutch oven, and the exhaust steam from the engine heats the water before it is forced into the boiler. The company now have a number of men at work in the woods taking out logs for the ensuing season.