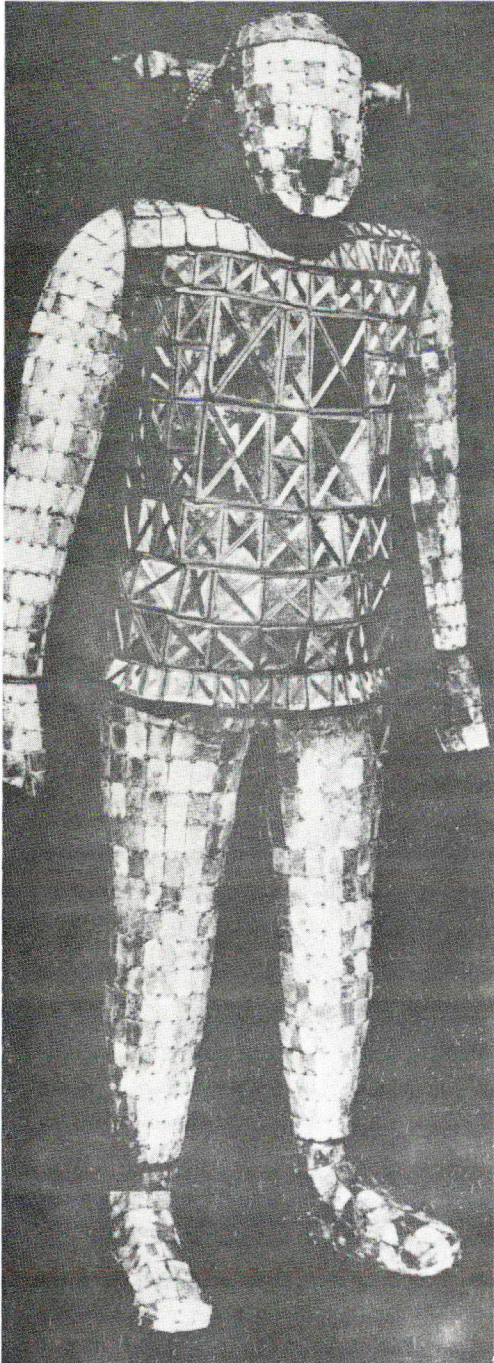


All the objects at the Royal Ontario Museum display were unearthed during the past 25 years.

The Chinese exhibition has been described as "the exhibition to end all exhibitions".



This burial suit of Princess Tou Wan, made of 2,160 pieces of jade, sewn together with 703 grams of gold thread, would probably take an expert more than ten years to make. It was found in her tomb in 1968. Jade was believed to preserve the body from decay.



One of the interesting bronzes on display is this rectangular four-legged ritual food vessel, which has a realistic human mask in high relief on each of its four sides. The object probably

was used in connection with human sacrifice, though the significance of its unique design is not fully understood. Shang dynasty (1523-1027 B.C.)



Bronze leopards inlaid with silver and gems found in 1968 in the tomb of Princess Tou Wan of the Western Han



dynasty, late 2nd century B.C. They were probably used as shroud weights.