

New Government Offices, Ottawa, Ont.

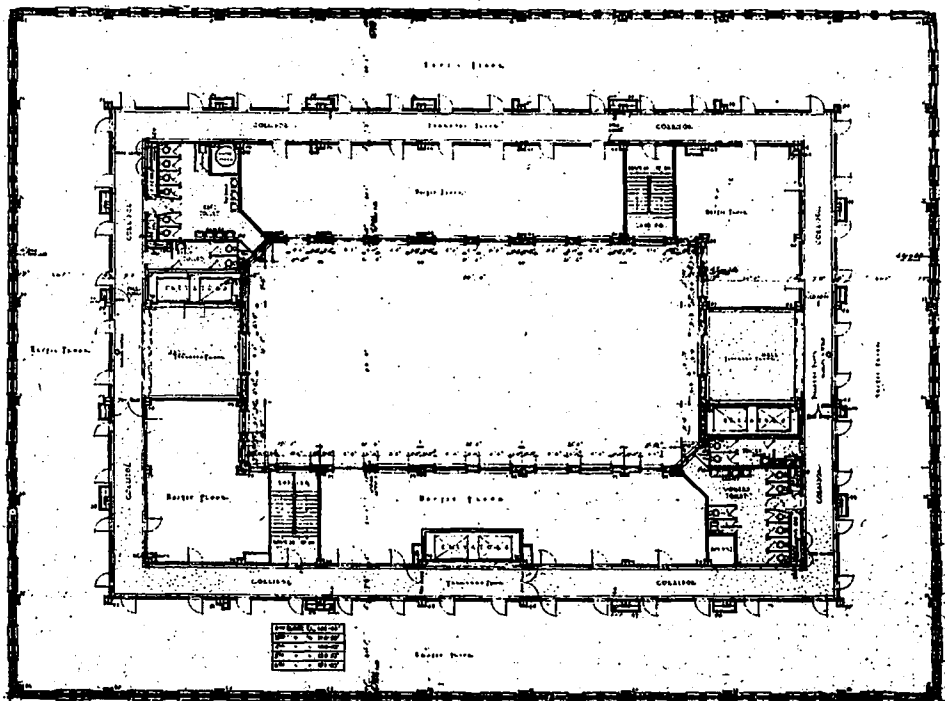
THE new Hunter Building just completed at Ottawa, centralizes under one roof various departmental staffs which have been heretofore scattered throughout the city, and thus ensure the more speedy and convenient transaction of Government business. Owing to the urgent need for accommodations for this purpose, and the fact that its erection was undertaken during the war period, the Government on strictly economical grounds deemed it inadvisable at the time to consider a building of a more monumental type. For the same reason the completed structure was also considered as an isolated unit, and does not conform to the official plan of Ottawa which was prepared jointly for the city and the Government at a cost of \$70,000.

The building has therefore been designed and planned along the commercial lines of a modern office building and so constructed as to most economically meet the requirements for which it is intended. The frame work is of skeleton steel construction encased in concrete and carried on steel columns from the foundation rock. The floor system is of reinforced concrete with mastic finish and the partitions throughout are of gypsum blocks. Granite is used to approximately the ground floor level, with two stories of limestone above, the remaining stories being a light tapestry brick with stone trimmings and backed by twelve-inch hollow tile.

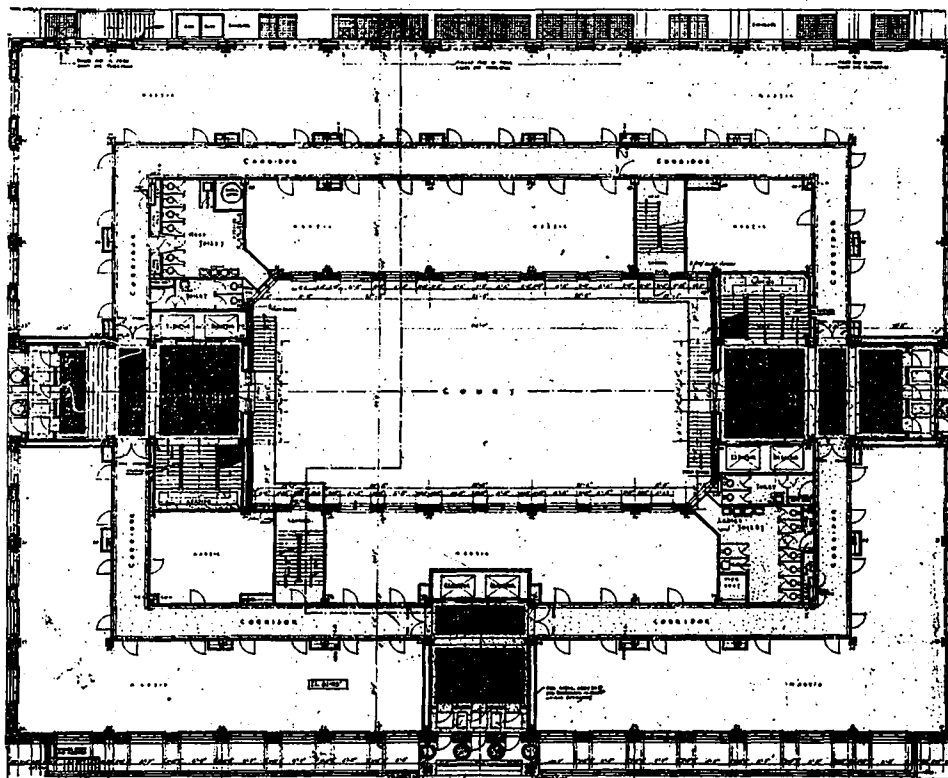
Entrance to the building is obtained from O'Connor, Queen and Albert streets, through vestibules to the elevator halls, from which corridors on the several floors give access to the various offices. The main en-

trance halls on the ground floor have marble dadoes and marble mosaic floors, all other halls and corridors having terrazzo floors with a seven-foot cement dado finished with white vitrolite enamel.

There are three batteries of elevators of two



TYPICAL FLOOR PLAN.



GROUND FLOOR PLAN

cars each, one battery at each of the three entrances, which ensure speedy distribution to all