



4110 Misses's Eton Jacket,
12 to 16 yrs.



4113 Girls' Costume,
8 to 14 yrs.



4102 Girl's Dress, 8 to 14 yrs.



4107 Sailor Blouse, 32 to 40 bust

be black or colored velvet, ribbon, lace insertion or fancy braid, or can be omitted altogether.

To cut this waist in the medium size $3\frac{1}{2}$ yards of material 21 inches wide, 3 yards 27 inches wide, $2\frac{1}{2}$ yards 32 inches wide, 2 yards 44 inches wide will be required, with $1\frac{1}{4}$ yards of all-over lace for yoke, collar and under portions of sleeves.

The pattern 4,109 is cut in sizes for a 32, 34, 36, 38 and 40 inch bust measure.



Woman's Tailored Shirt Waist.

Severely plain shirt waists made on tailored lines have a smartness and distinction of their own, and are much liked for morning and general utility wear. The excellent example illustrated combines all the essential features, and is shown in old rose linen etamine, worn with tie and belt of black, but is suitable to all cotton and linen waist materials, to flannel, albatross, taffeta and the like.

To cut this waist in the medium size 4 yards of material 21 inches wide, 3 yards 27 inches wide, $2\frac{3}{4}$ yards 32 inches wide, or 2 yards 44 inches wide will be required.

The pattern 4,099 is cut in sizes for a 32, 34, 36, 38, 40, 42 and 44 inch bust measure.



Woman's Sailor Blouse.

Sailor blouses are always attractive and suit the greater number of figures to a nicety. The smart model shown is made of white linen, with shield and trimming of white, dotted with blue, and makes part of a costume, but the design suits odd waists equally well, and is adapted to all washable fabrics, to flannel, albatross and waisting silks.

The blouse is cut with fronts and back only and fitted by means of shoulder and underarm seams. To its open neck is seamed the big sailor collar that can be cut in round or square outline as preferred. The shield to which the short collar is attached is buttoned round the neck and fastened to the waist beneath the collar. The sleeves are in the new bishop style, with deep pointed cuffs.

To cut this blouse in the medium size 4 yards of material 21 inches wide, $3\frac{3}{4}$ yards 27 inches wide, 3 yards 32 inches wide, or 2 yards 44 inches wide will be required, with $\frac{3}{4}$ yard for shield and stock collar.

The pattern 4,107 is cut in sizes for a 32, 34, 36, 38 and 40 inch bust measure.



Misses Eton Jacket.

Eton jackets are in the height of style for young girls and for general wraps, as well as for jacket suits. This fashionable model is shown in taffeta, finished with stitching of silk and with collar of batiste, lace edged, over the one of silk, but moire velours, cheviot, linen and cloth are equally appropriate, as are all suitings for the jacket made en suite.

To cut the Eton for a miss of 14 years of age $3\frac{3}{4}$ yards of material 21 inches wide, $3\frac{1}{4}$ yards 27 inches wide, $1\frac{1}{2}$ yards 44 inches wide, or $1\frac{1}{2}$ yards 50 inches wide will be required when collar is used; 3 3-8 yards 21 inches wide, 3 yards 27 inches wide, 1 3-8 yards 44 inches wide, or $1\frac{1}{4}$ yards 50 inches wide when collar is omitted.

The pattern 4,110 is cut in sizes for misses of 12, 14 and 16 years of age.



Girl's Costume.

Simple little frocks worn with guimpes and finished with becoming berthas are much in vogue for young girls, and are always charming. This very pretty model is suited to countless materials, washable cottons and linens, simple wools and silks; but as shown, is made of dotted Persian lawn with yoke of inserted tucking and trimming of insertion and lace to match. The yoke may be omitted and the guimpe shown in the small cut used with either the elbow or the long bishop sleeves. The waist fitted by means of shoulder and underarm seams is gathered at the neck and

again at the waist line. Finishing the low neck is a scalloped berthas, the edges of which are trimmed with insertion and frill of lace.

To cut this dress for a girl of 10 years of age $6\frac{5}{8}$ yards of material 21 inches wide, $4\frac{1}{2}$ yards 32 inches wide, or $3\frac{1}{2}$ yards 44 inches wide will be required, with 3-8 yards of tucking for yoke.

The pattern 4,113 is cut in sizes for girls of 8, 10, 12 and 14 years of age.



Woman's Seamless Corset Covers.

The comfort and satisfaction to be obtained from a perfect-fitting corset are beyond compute. This pretty model adds the charm of simplicity to that all-essential feature, and is desirable from every point of view. As shown it is made of mainsook, with trimming of narrow frills and beading, threaded with ribbon, but long cloth, cambric, Paris muslin, and even mull are used, and the trimming can be lace, needlework, or the simple frills, as preferred.

The corset cover is made without seams, so requiring the minimum labor and time, but is absolutely shapely and provides fullness only where fullness is desirable. At the waist line and at the back it is absolutely smooth and without folds. The front edges are hemmed and supplied with buttons and button-holes, by means of which the garment is closed. The lower edge can be finished with the beading only, or with a circular basque portion, seamed to it as preferred.

To cut this corset cover in the medium size 1 yard of material 36 inches wide will be required, with 4 yards of beading and 5 yards of edging to trim as illustrated.

The pattern 4,104 is cut in sizes for a 32, 34, 36, 38, 40, 42 and 44 inch bust measure.



Four Gored Yoke Petticoat Lengthened by a Gathered Flounce.

The necessity for a perfectly-fitting petticoat is recognized by every woman, and requires no urging. This excellent model was designed with special reference to the season's styles, and provides ample fullness at the lower portion, while it fits snugly over the hips. The original is made of cambric, with a flounce of embroidery, but long cloth, muslin, mainsook and Paris muslin are equally suitable, with flounce of needlework or of the material, trimmed with lace or embroidered edging, and the design will be found admirably adapted to silk, mohair and the like. The flounce being seamed to the lower edge means the minimum of material, and renders the skirt peculiarly desirable for silk, while it also means perfect and ready laundering when cotton is used.

To cut this petticoat in the medium size $4\frac{1}{4}$ yards of material 21 inches wide, $3\frac{1}{2}$ yards 27 inches wide, $2\frac{3}{4}$ yards 32 inches wide, or 2 yards 44 inches wide will be required for the upper portion, $4\frac{1}{2}$ yards of embroidery 14 inches wide for flounce, or 3 yards 21 inches wide, $2\frac{1}{2}$ yards 27 inches wide, 2 yards 32 inches wide, or $1\frac{1}{4}$ yards 44 inches wide.

The pattern 4,106 is cut in sizes for a 22, 24, 26, 28, 30 and 32 inch waist measure.

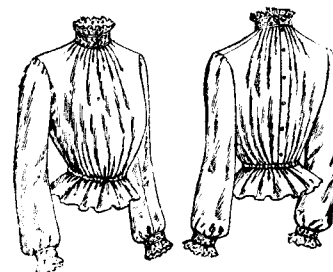


Girl's Dress.

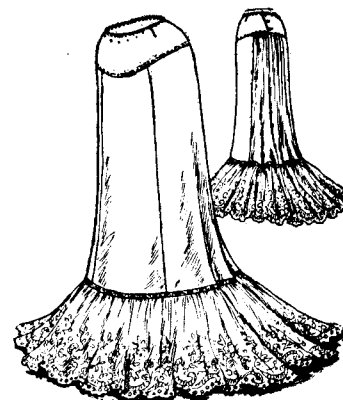
Fine tucking makes a feature of the season's fashions for children and young girls, as well as for their elders. The very pretty frock shown exemplifies its use in a most attractive manner, and is suited to many materials. The original is of white Persian lawn, with trimming of German Valenciennes lace, but all the finer soft washable fabrics are appropriate, as are India silk, veiling, albatross and all pliable wools, while the trimming can be lace, embroidery, velvet ribbon or stitched bands.

To cut this dress for a girl of ten years of age $6\frac{1}{4}$ yards of material 27 inches wide, $4\frac{3}{4}$ yards 32 inches wide, or $3\frac{1}{2}$ yards 44 inches wide will be required.

The pattern 4,102 is cut in sizes for girls of 8, 10, 12 and 14 years of age.



4111 Girl's Guimpe,
4 to 14 yrs.



4106 Four-Gored Yoke Petticoat,
22 to 32 waist.



4104 Seamless Corset Cover,
32 to 44 bust.



4099 Shirt Waist, 32 to 44 Bust.