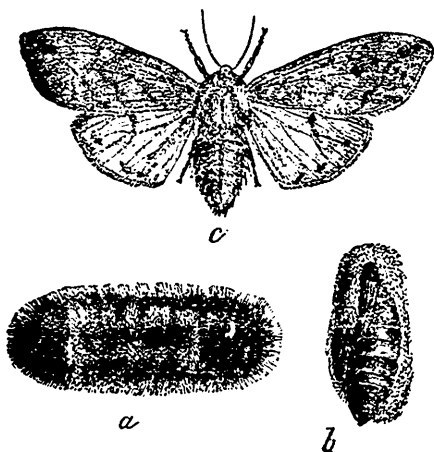


coils itself up there into a sort of ball and sleeps through the long and dreary winter, and about the time when the birds come back and the warm days of spring begin, this bristly creature rouses itself to begin life anew. Hence it is one of the few caterpillars which present themselves to us full grown in early spring, and from its peculiar appearance can scarcely fail to attract attention. It has not to wander far for food, for, being in possession of an omnivorous appetite, it feasts on the first green thing it meets with, grass, or weed, or early plant, and having fed but a short time, it spins its cocoon and becomes a chrysalis.

The caterpillar is about an inch and a quarter long; its head and body are black, and it is thickly covered with tufts of short, stiff, bristly hairs, which are dull red along the middle of the body and black at each end. When handled it immediately coils itself into a ball and remains for some time motionless. It is very tenacious of life; we have known the larva to be frozen in a solid lump of ice, and when thawed out move around as if nothing had happened. It sometimes occurs, although very rarely, that this larva becomes a chrysalis early in the fall, and produces the moth the

Fig. 14.



same season. We have never met with an instance of this but once, see CAN. ENT., vol. i, p. 26; its usual course is that which has already been partially described.

Its cocoon, *b*, fig. 14, is spun in some secluded nook, and is of a dark color, of an elongated oval form and curiously wrought with a network of silk, in the meshes of which are interwoven the black and red hairs from the body of the caterpillar. Within this enclosure the insect changes

to a dark brown chrysalis, and remains as such about two or three weeks, sometimes longer, when the moth having burst its shelly covering, softens the silky fibres of which its cocoon is formed by a liquid with which it is furnished, and makes its exit through a hole at one end of the cocoon.

The moth, *a*, fig. 14, when its wings are spread, measures about two inches. Its wings are of a pale yellowish buff colour, with a few dull