

## CANADIAN MANUFACTURERS and WHOLESALERS

## THE PEMBROKE LUMBER CO. LIMITED

Pembroke, Ont.

DIMENSION TIMBER A SPECIALTY. WRITE OR WIRE FOR QUOTATIONS. ROUGH AND DRESSED LUMBER IN ALL GRADES AND SIZES.

Car-Sills. Ship-planking. Pump-stock. Turning-squares, Etc.

DIMENSION TIMBER  
Up to 60 feet in lengthSASH and DOOR  
SKEWERS

## JOHN HARRISON &amp; SONS COMPANY LIMITED

SAW and  
PLANING MILLSPINE and HARDWOOD  
Lumber and Timber Manufacturers

OWEN SOUND, ONT.

## WANTED --- 4 X 4 CEDAR FOR 1902 DELIVERY

We are open to make contracts for this class of stock 10 to 16 feet long to be cut and shipped through the year 1902 in from one to ten car lots; can take it dry or green.

Address, REID &amp; CO., Esplanade St., Toronto.

We also want some 1 x 14 Soft Elm, 2 and 3 inch Rock Elm, 2, 3 and 4 inch White Oak for delivery any time between now and the 1st April.

When in the market for  
Pine or Hardwood

Lumber

Write or telephone us

## THE OLIVER LUMBER CO., OF TORONTO, LIMITED

84 Canada Life Building, Toronto. Tel. Main 353.

## RHODES, CURRY &amp; CO., Limited

LUMBER MERCHANTS.

Yards at Amherst, Little Forks, Sydney and Halifax.

BUILDING MATERIALS of all kinds carried in stock. We are buyers of Ontario Basswood, Elm and Pine.

Amherst, N.S.

SQUARE and Sawn Spruce and Pine Lumber, Dimension Timber, Birch, Ash, Tamarac, B.C. Fir and Cedar, Flooring, Shingles, &amp;c.

JAMES J. MURPHY, 26 St. James St., Quebec

## BOOTH &amp; SHANNON, BISCOTASING, ONT.

MANUFACTURERS OF

Red and White Pine Lumber, Lath and Shingles.

Shipments promptly attended to.

Inquiries answered by return mail

We are now located in our new offices at 18 Toronto Street, Toronto, in the Canada Permanent Building, Room 67.

## R. LAIDLAW LUMBER CO.

SARNIA TORONTO BUFFALO

## JAS. PLAYFAIR &amp; CO.

Manufacturers and Wholesale Dealers

## LUMBER • LATH • SHINGLES

Contractors for Railway Supplies  
BILL TIMBER a Specialty . . .

MIDLAND, ONT.

## A. &amp; P. WHITE

Manufacturers of and  
Dealers in . . . . .

Sawn and Planed Lumber, Dimension Timber, Joisting, Car Sills, Car Flooring, Shingles and Lath.

PEMBROKE, ONT.

A quantity of 6x6, 6x8, 8x8, 8x10 and 10x10x18 ft. and up White Pine Dimension Timber, for sale

## Robert Watt - Wiarton

MANUFACTURER OF AND WHOLESALE DEALER IN

## LUMBER

of all kinds. Pine Lath, Cedar Shingles and Posts. Dressed Pine and Hardwood Flooring, Lumber resawn into Dimension Stuff such as Crating, Table Legs, Chair Rungs, Etc. Cedar and Hemlock Bill Stuff Cut to Order

Shipment by Rail or Water.

Correspondence Solicited.

## The Siemon Bros.' Factories and Mills

Operated by  
CANADA FURNITURE MFRS., Limited.

WIARTON, ONT.

## LUMBER MERCHANTS AND MANUFACTURERS

We manufacture and deal in Hard and Soft Wood Lumber and Timber, Ties, Cedar Posts and Shingles. Correspondence invited. Shipping facilities, Rail and Water. . . . .

## WILLIAMSON &amp; MORRISON

Mills at L'Original, Ont.

HEAD OFFICE:  
30 St. John Street, MONTREAL, P.Q.

WHOLESALE

## Turner Lumber Co., Limited

MANUFACTURERS

## LUMBER and LATH

Shipments by Rail or Water.

Midland, Ont.

Cable Address:  
GILMOUR, TRENTON

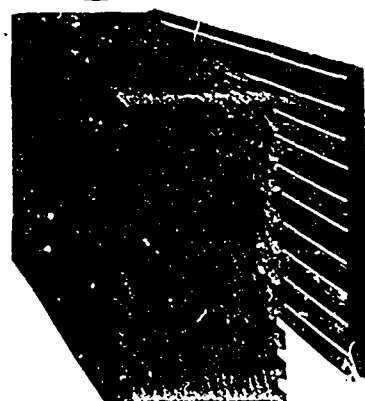
ESTABLISHED 1820

MAIN OFFICES:  
TRENTON, ONTARIOCODES: 3 C  
LUMBERMAN'S  
ZEBRA  
ESTABLISHED 1820

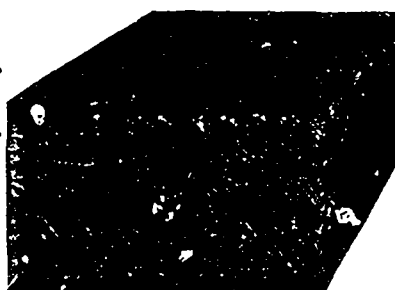
## GILMOUR &amp; CO., LTD.

TRENTON, CANADA

BRANCH OFFICES IN: London, Eng. New York Chicago Glasgow Capetown, S. Africa Sydney, Australia

PATENT  
LUMBER

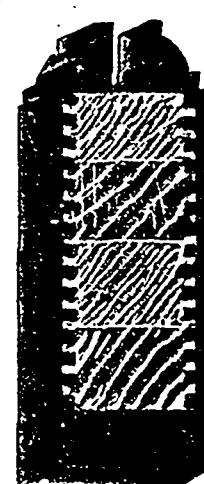
SECTION SHOWING PROCESS



SECTION PATENT LUMBER

Saw Mills, Patent Lumber,  
Door, Sash, Box  
and Veneer FactoriesCapacity of Mills and Factories  
25,000,000 feet per year

OUTPUT: 300,000 DOORS Per Year:



STYLE SECTION

Manufacturers of—SASH, DOOR and BOX FACTORY GOODS, LATH, SHINGLES, RAILROAD TIES, TELEGRAPH POLES and POSTS, JOINERY, FINE INTERIOR FINISH, HARDWOOD FLOORING, Etc. Egg CASES, Egg FILLERS. Write or Wire for Samples and Price Lists.

Responsible Agents Wanted in all Parts of the World

ORDERS PROMPTLY FILLED

GILMOUR & COMPANY, LIMITED  
TRENTON, CANADA