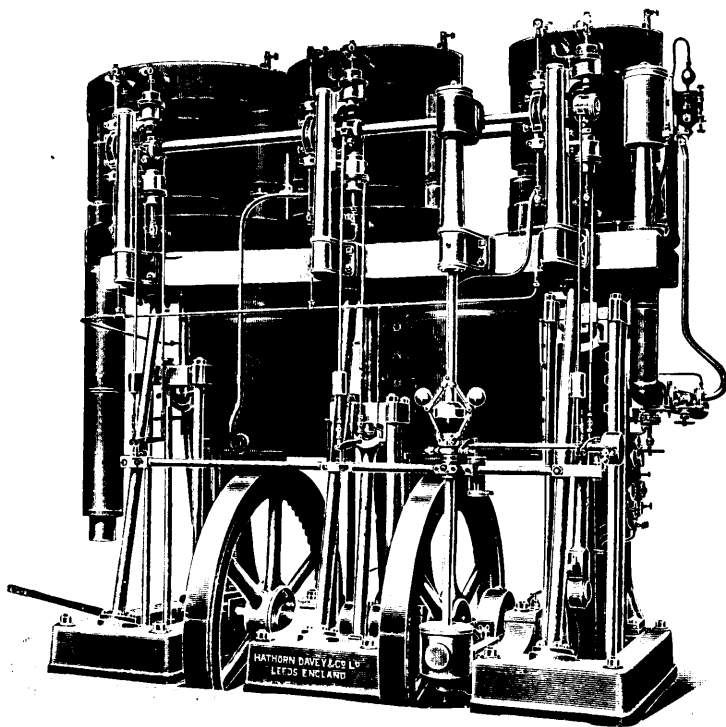


PUMPING MACHINERY



MELBOURNE AND METROPOLITAN
BOARD OF WORKS.

Triple Expansion Sewage Pumping Engine.

OFFICIAL TRIAL.

ENGINE DIMENSIONS.

Diameter of Cylinders, 20 in., 36 in., 54 in.
Rams, 3 Single Acting, each 30 in. in Diameter.
Stroke of Engine and Pump, 3 ft. 6 in.
Steam Pressure, 150 lb.

ENGINE RESULTS.

Pump Horse-Power, 274.55.
Saturated Steam per indicated Horse-Power, per
Hour 12-4 lb.
Mechanical Efficiency, 92.8 per cent.

Contract Duty to raise 6240 Imperial galls. of sewage per minute 125 ft. high.

Hathorn Davey & Co. Ltd. LEEDS, ENGLAND.

Sole Canadian
Representatives

PEACOCK BROTHERS

Canada Life Building
MONTREAL.

ROBERT MEREDITH & CO.

57 St. Francois Xavier St., MONTREAL

Stock Brokers. Dealers in Mining and Industrial Shares. Companies Formed and Floated.

Private Wire Connection with

ZIMMERMANN & FORSHAY, New York.

ARE YOU CONFRONTED WITH A DIFFICULT ORE-SEPARATING PROBLEM?

THE WETHERILL MAGNETIC SEPARATING PROCESS
MAY PROVE THE SOLUTION.

For information and for Illustrated Pamphlet, apply to

WETHERILL SEPARATING CO., 52 BROADWAY, NEW YORK.

GOLD MEDAL awarded at the WORLD'S FAIR, ST. LOUIS, MO.
Mfg. Agents for Canada, **ROBERT GARDNER & SON, Montreal, P.Q.**

CYANIDE PLANTS.

CANADIAN PATENTS 81954 AND 86862.

BLAISDELL MACHINERY effects a saving of from 50 to 90% in operative expenses.

WRITE FOR CATALOGUE TO

THE JOHN McDOUGALL CALEDONIAN IRON WORKS CO. Ltd., Montreal
BUILDERS FOR CANADA.