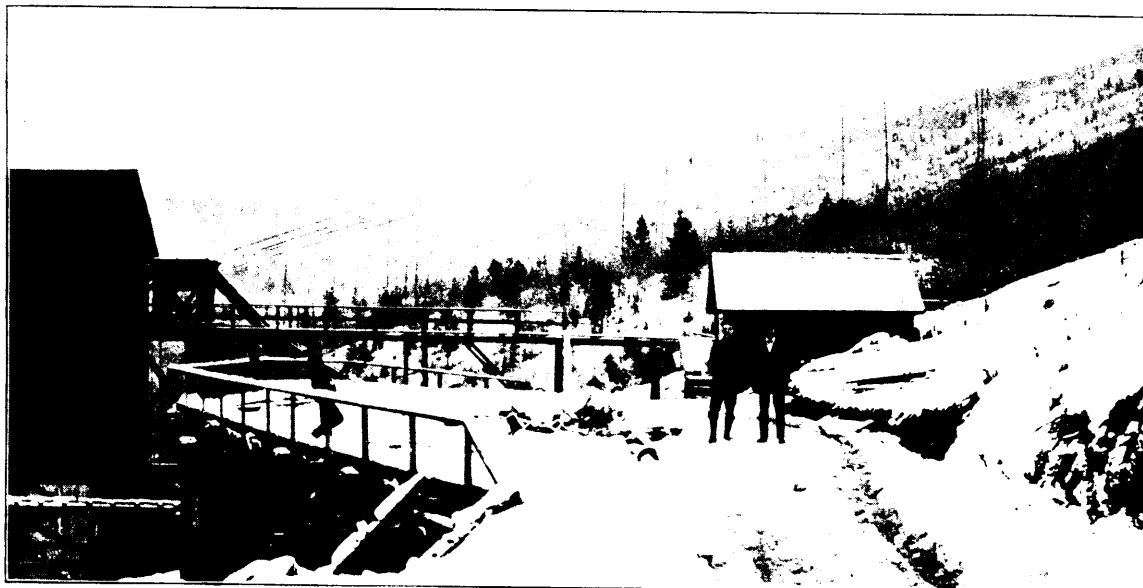


# One Man Can handle 1600 TONS per day with a Riblet Patent Automatic Aerial Tramway

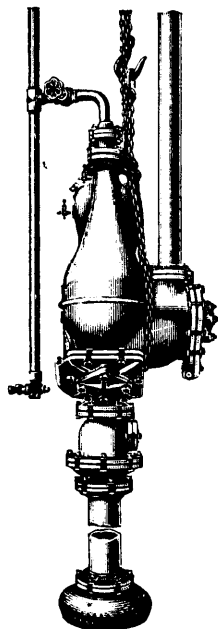


YOU CAN FIGURE  
THE COST PER TON

More Riblet Tramways are now being  
installed than of all the other  
systems combined

WRITE FOR DESCRIPTION  
AND PRICES

**B. C. RIBLET, ENGR.**  
Spokane, Wash., U.S.A.  
Nelson, B.C., Canada



## The Pulsometer

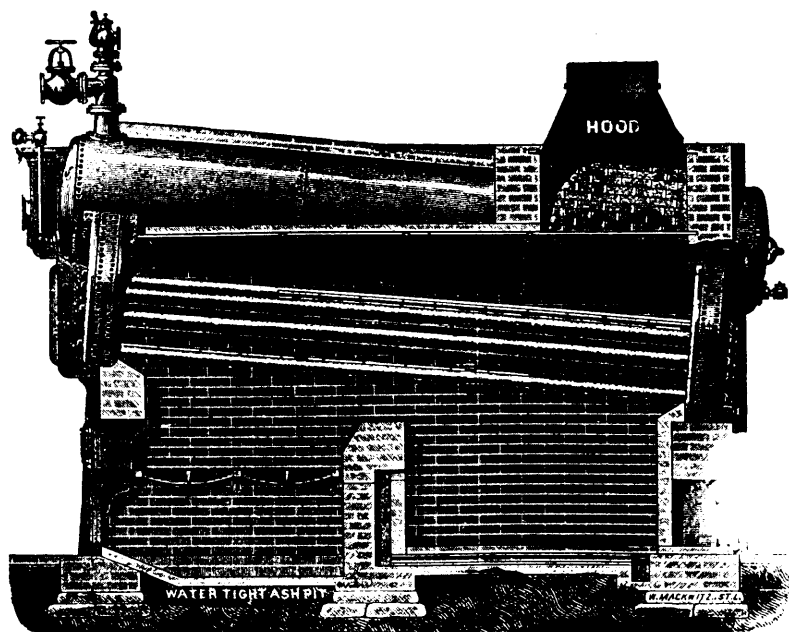
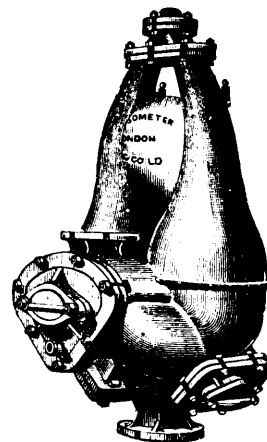
PULSOMETER ENGINEERING CO., Limited, READING, ENGLAND

1,000 TO 100,000 GALLONS PER HOUR

PUMPS ALMOST ANYTHING

NOISELESS. NOT AFFECTED BY WEATHER.  
NO SKILLED LABOR REQUIRED.  
MOST ECONOMICAL AND BEST MADE.  
NO EXHAUST STEAM. SIMPLE. DURABLE.

**PEACOCK BROTHERS** SOLE CANADIAN REPRESENTATIVES  
CANADA LIFE BLDG., MONTREAL



## HEINE SAFETY BOILER

MANUFACTURED BY

**The Canadian Heine Safety Boiler Co.**  
TORONTO, ONT.

**THE HEINE SAFETY BOILER**—Made in units of 100 to 500 h.p., and can be set in batteries of any number. Suitable for Mines, Pulp Mills, Water and Electric Installations, and large plants generally. The best and most economical boiler made.