

Cedar Poles

FROM

"British Columbia"

The strongest, straightest and soundest pole that grows in the "WORLD."

We can ship them East as far as Quebec and compete with Eastern poles 40 ft. and longer.

In Ontario we can compete only on 35ft. poles and longer.

In Manitoba—30 ft. and longer.

In Alberta and Saskatchewan we are "IT" on all lengths.

Don't be afraid of them. They are the leading pole for City and Power line construction.

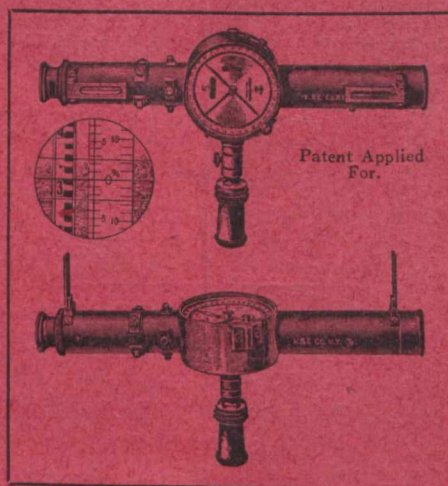
Yards on C.P. Railroad in British Columbia, Kootenay District. They are thoroughly seasoned.

We name delivered prices **always** and guarantee immediate shipment.

Write for carload prices on our **Oregon Fir Cross-Arms.**

The Lindsley Brothers Co.
Spokane, Washington

Stadia Hand Transit



A New Universal Instrument for Preliminary Surveying

This transit gives more accurate results in less time than any similar portable instrument. It is useful for measuring distances, angles, slopes and taking compass bearings. The instrument is thoroughly well made and is furnished with a hand sewed leather sling case.

Send for Special Circular.

KEUFFEL & ESSER CO.

MONTREAL, 252 Notre Dame St., W.

General Office and Factories

HOBOKEN, N.J.

New York Chicago St. Louis San Francisco

Drawing Materials Measuring Tapes

Mathematical and Surveying Instruments

EDGAR ALLEN & CO. Limited

Imperial Steel Works
SHEFFIELD, England

Manufacturers of
The Edgar Allen

HIGH SPEED STEEL



and best grades of

TOOL STEEL

Stocks carried by our Agents:

Williams & Wilson, 320 St. James St., Montreal

H. W. Petrie, Ltd., 131 Front St. West, Toronto

A. R. Williams Machinery Co., Vancouver

The Brydges Engineering & Supply Co., Ltd., Winnipeg

Manager for Canada:

Thos. Hampton, 320 St. James St., Montreal

POINTS and CROSSINGS
and Tramway Layouts

Made of

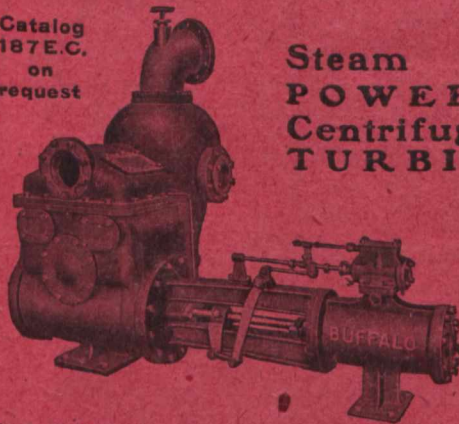


MANGANESE STEEL

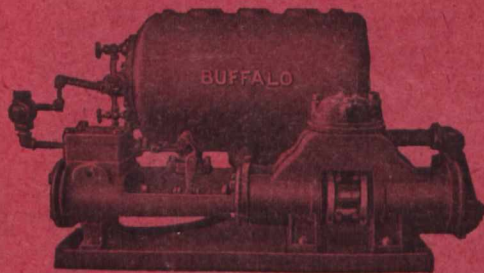
BUFFALO PUMPS

Catalog
187 E.C.
on
request

Steam
POWER
Centrifugal
TURBINE



Single Cylinder Air Pump and Jet Condenser. Valve Motion positive. No possibility of injection water getting into engine cylinder in case of breakdown. Built in 18" sizes.



Automatic Duplex Feed Pump and Receiver automatically delivers to the boiler, the high temperature condensation of any steam line. The economy of this system cannot be questioned. Built in 16" sizes.

CANADIAN-BUFFALO FORGE CO., Ltd.

Engineers and Manufacturers

MONTREAL