

**ARTIFICIAL STONE PAVEMENTS**

**SIDEWALKS A SPECIALTY**  
**CORPORATIONS** Will do well to consider our work  
 and prices before letting contract.  
**The Silica Barytic Stone Company**  
 of Ontario, Limited.

**WALTER MILLS** **Head Office:**  
 General Manager. **INGERSOLL, ONT.**

**The British Columbia**  
**General Contract Co.**  
 Limited

Telegraphic Address: "Dredging"

Suite 5, Crowe & Wilson **VANCOUVER, B. C.**  
 Block, 441 Seymour Street

**ENGINEERS**  
 AND  
**CONTRACTORS**

MUNICIPAL WORKS AND BUILDINGS  
 DREDGING AND RECLAMATION  
 CONCRETE CONSTRUCTION  
 RAILWAYS, BRIDGES  
 HARBOR WORKS

Stone Crushers and Grinders.  
 Steam Road Rollers.  
 Fire Engines Steam and Gasoline.  
 Bricks Pressed and Enameled.  
 "Roman" building stone.



**"Tamco"**

Crushed Stone  
 for Concrete  
 Roofing and  
 Macadam.

**T. A. Morrison & Co.**

204 St. James Street,  
 Telephone Main 4532.

**MONTREAL.**

Please mention **CONTRACT RECORD**  
 when corresponding with  
 advertisers.

**Dominion**  
**Bridge**  
**Co., Ltd.**

P. O. Address, **MONTREAL, P.Q.**  
 Works at **LACHINE LOCKS, P.Q.**

**STEEL BRIDGES**

For Railways and Highways  
 Piers, Trestles, Water Towers,  
 Tanks, Buildings, Roofs, Girders,  
 Beams and Columns

Toronto Agent: **GEO. E. EVANS,**  
 38 Canada Life Bldg., **TORONTO, ONT.**

**PORTLAND CEMENT**

**SEWER PIPES**

**FIRE BRICKS**

**FIRE CLAY**

**ALEX. BREMNER**

**50 Bleury Street, MONTREAL**

**SEWER PIPES**

CHIMNEY TOPS  
 FLUE LININGS  
 WALL COPING



Salt Glazed and  
 Vitrified.

TRUE TO SIZE  
 IMPERVIOUS TO WATER  
 WILL NEVER DISINTEGRATE

Sizes manufactured and  
 always in stock:  
**4-inch to 24-inch.**

Ask for Price List  
 and Discount.

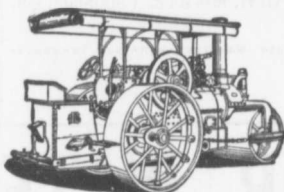
Telephone (Toronto Connection): Park 1809.

Post Office: **SWANSEA.**

**THE DOMINION SEWER PIPE CO., LIMITED**  
 (THE INDEPENDENT COMPANY)

WORKS AND OFFICE:  
**SWANSEA**  
 (NEAR TORONTO)

**"WATEROUS"**  
**ROAD MACHINERY AND**  
**FIRE APPARATUS**



**FIRE ENGINES** in five sizes,  
 with a full line of fire-  
 fighting goods.

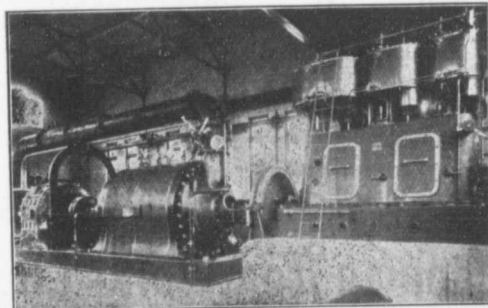
We Rebuild other makes of  
 Fire Engines with our  
 patent Boiler.

**BRANTFORD PITTS DOUBLE ENGINE STEAM ROAD ROLLER**

IN THREE SIZES—10, 12 and 15 ton.

CORRESPONDENCE SOLICITED.

**HUGH CAMERON & CO.,** Selling Agents **72 Queen St. West,**  
 Manning Chambers. **TORONTO**



Six Stage Turbine Pump Electric Motor and High Speed Steam  
 Engine. Built for the Montreal Water and Power Co.,  
 to do 4500 imperial gallons a minute against  
 300 feet head. Overall 87.76 per cent.

**PATENT**  
**TURBINE PUMPS**

KORTUNG TWO CYCLE GAS ENGINES,  
 GRAVITY AND PRESSURE FILTERS,  
 WATER SOFTENING APPARATUS,  
 ELECTRICAL MACHINES.

— BUILT BY —

**MATHER & PLATT, LIMITED**  
**MANCHESTER, ENG.**

CANADIAN AGENTS:—

**Drummond, McGall & Co., Montreal**