

WILLIS CHIPMAN

Hon. Grad. McGill University.
M. Can. Soc. C.E., M. Am. Soc. C.E.
Mem. Am. W.W. Ass'n.

**WATERWORKS, SEWERAGE WORKS, GAS
WORKS, ELECTRIC LIGHT AND
POWER PLANTS**
Reports, Surveys, Construction, Valuations
103 BAY STREET - TORONTO

R. E. SPEAKMAN, C.E.

A. M. Inst. C. E., 1878.

CONSULTING ENGINEER

Waterworks, Sewerage and Sewage Disposal.
Municipal Improvements.
Granolithic Pavements.
Electric Light Plants.
Drainage and Irrigation of Land.
Coal Handling Plant and Machinery.
Plans, Specifications and Estimates.
Construction and Valuations.

Canada Life Building - TORONTO

Roderick J. Parke

Am. Can. Soc. C.E., A.M. Amer. Inst. E.E.

CONSULTING ENGINEER

Hydraulic Power Development. Long Distance
Power Transmission. Steam Plants, Electric
Lighting and Power Systems. Tests
Valuations. Reports.

12-5 James Building, Cor-
King and Yonge Streets TORONTO, CANADA

Telephones (Office)—Long Distance Main 3047
Residence—Long Distance North 2204
Telegraphic address: "Rokparke."
W. U. Code, Univ. Edition.

WILLIAM H. BREITHAUP, C.E.

M. AM. SOC. C.E., M. CAN. SOC. C.E.

CONSULTING STRUCTURAL ENGINEER

Foundations, Bridges, Buildings.
BERLIN, ONT.

ROSS & HOLGATE**Consulting and
Supervising Engineers**

Waterworks, Electric Light and Power
Plants, Structural Work, Reports,
Estimates, Arbitrations.

17 ST. JOHN ST. - - - MONTREAL
McKINNON BLDG. - - - TORONTO

Percival W. St. George

Mem. Inst. C. E. London, England.
Mem. Can. Soc. C.E.

CONSULTING ENGINEER

Railway, Sewerage, Water, Hydraulic,
Expert and Arbitrations, &c.

BELL TELEPHONE BLDG. MONTREAL
Telephone, Main 4717.

JAMES C. KENNEDY

MEM. CAN. SOC. C.E.

CIVIL AND HYDRAULIC ENGINEER

Examinations, Reports, Plans, Estimates
Supervision of Construction, Water
Powers, Water Works, Sewerage, etc.

P. O. Box 710, Owen Sound, Ont., and
877 Dorchester Street, Montreal, Que.

GEO. L. GRIFFITH, C.E.

Mem. Dom. Inst. Amal. Eng.; Mem. Can.
Min. Inst.

Municipal Engineering in General.

Waterworks, Sewerage and Sewage
Disposal, Street Railways, Concrete
Pavements, Concrete Steel Bridges,
Drainage and Irrigation, Water Power
Development, Reports, Plans, Specifi-
cations, Estimates, Construction.

General Instrumental Surveys undertaken for
Public Works of every description.

Bank of Hamilton Chambers, Winnipeg, Man.

John H. Jackson

CIVIL ENGINEER

WATER POWER, ELECTRIC RAIL-
WAYS, STRUCTURAL STEEL.

Niagara Falls, Canada

Associated with Charles H. Mitchell,
C. E., Hydraulic Engineer.

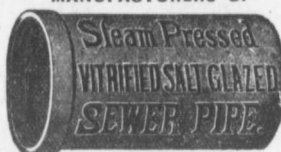
CHARLES BRANDEIS

Consulting Electrical and Mechan-
ical Engineer.

Electric Lighting, Power and Railway
Plants.
Liverpool, London and Globe Building,
MONTREAL.
Long Distance Telephone Main 3256.

THE CANADIAN SEWER PIPE CO.

MANUFACTURERS OF



FOR

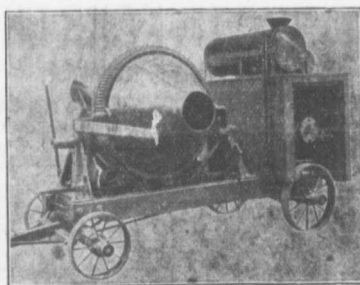
**Sewers, Culverts and Water Pipes
Inverts for Brick Sewers**

WRITE FOR DISCOUNTS

ST. JOHN'S P. Q.

HAMILTON, ONT.

TORONTO, ONT



No. 1 Smith Mixer on Trucks With Gasoline Engine.

SMITH MIXERS

Are Unexcelled for Rapid and Thorough Mixing.
They are the Simplest and Strongest in Con-
struction. Capacities up to 350 Cubic Yards
per Day.

W.H.C. MUSSEN & CO., 763-765 Craig St.
MONTREAL.

18
Different
Sizes
and
Styles.

Mounted
on
skids
or
Trucks.

With
or
Without
Power
Attached

**CANADIAN
CONTRACTOR'S
HAND-BOOK**

and
Estimator

Third Edition

Price \$1.50; to
subscribers of
the Canadian
Architect and
Builder, \$1.00.

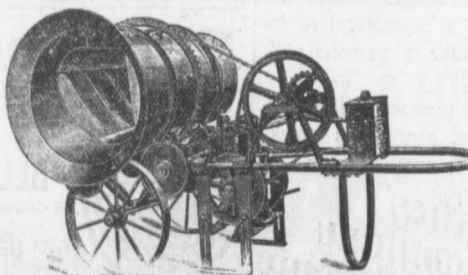
SEND FOR A COPY

C. H. Mortimer
Publishing Co.
Toronto.

Please mention THE CONTRACT RECORD when corresponding with advertisers.

THE McKELVEY CONCRETE MIXERS

MANUFACTURED BY W. A. McKELVEY, McKinnon Building, TORONTO.



These machines
are made to mix
either continu-
ously or in
batches, and can
be operated
either by Hand,
Steam or Gas-
line Power.