

THE SHERWIN-WILLIAMS Co.

OF CANADA, LIMITED

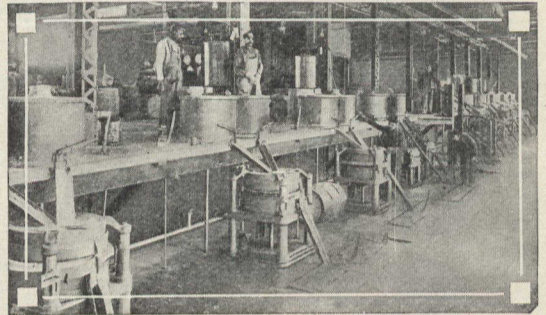
are the Largest Paint and Varnish Makers
in the British Empire.



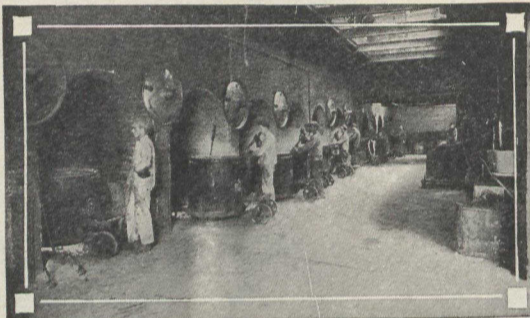
Sorting and grading gums. The first careful step in varnish-making. Gums come chiefly from New Zealand, Africa and India.



IGHTEEN years ago we started business in Canada and in those days our factory was a very modest affair. But we started with what we considered the right policy—we manufactured only the best quality goods. The tremendous growth and development of our business since then has proved that the Canadian public want good products, for today The Sherwin-Williams Co. of Canada, Limited, is the largest concern of its kind in the British Empire. Sherwin-Williams Paints and Varnishes are sold in practically every city, town and village in the Dominion as well as in all other parts of the world.



A gallery of paint mills of our own design. You should visit our nearest factory and see these in action.

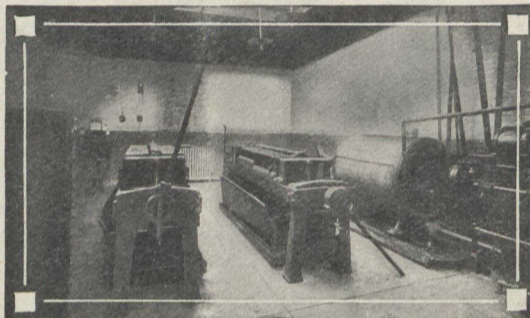


Melting the gums before the heated linseed oil is added.

In order to maintain a uniform high standard of quality we have found it necessary to control, as far as possible, the character of the raw materials which we use, and for this reason we manufacture the most important of these materials, such as Linseed Oil, Dry Colors, etc., and so are able to control their quality from the very beginning. This allows us to manufacture economically and not only assures our customers of satisfactory products but also enables them to buy the best at satisfactory prices.

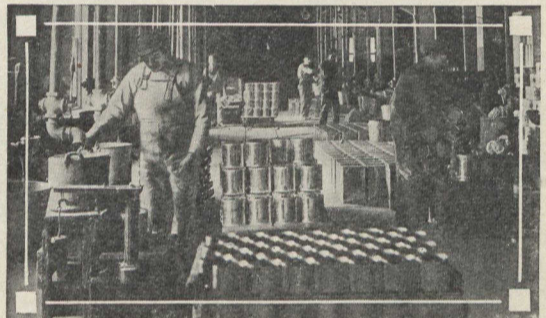


Skilled workmen tend these machines. Many have been in our employ for years.

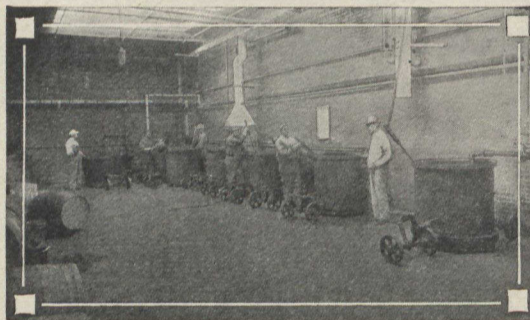


All sediment and undissolved gum is extracted by these powerful filters, which force the varnish through 71 thickness each of filter cloth and filter paper.

It has also been our aim to manufacture a complete line of everything in paints, varnishes, stains, enamels, colors, etc. We provide for every paint and varnish demand—we manufacture a satisfactory finish for every character of surface.



The cans are filled and weighed at the same time—a safeguard for full measure.



Cooling and thinning the varnish. Every detail receives the greatest care.

No matter what may be your need there is a Sherwin-Williams product to take care of it—for the protecting and beautifying of the exterior of your home or other buildings, for all kinds of interior decoration and finishing, for the upkeep of factory buildings, machinery, steamships, rolling stock of railways or tramway lines, the finishing of furniture, automobiles, carriages, and the countless other manufactured products in which paints, varnishes or enamels play an important part in the final finishing. No matter what your need may be in finishing materials, there is a Sherwin-Williams product to take care of that need.



Seeing the shade matches the standard. There is no variation in SWP colors.



Varnish storage-tanks.



THE SHERWIN-WILLIAMS Co.
of Canada, Limited

PAINT, VARNISH & COLOR MAKERS
LINSEED OIL CRUSHERS
FACTORIES: MONTREAL, TORONTO, WINNIPEG,
LONDON, ENG.
OFFICES & WAREHOUSES: MONTREAL, TORONTO,
WINNIPEG, CALGARY, VANCOUVER LONDON, ENG.



The final test—exposure to sun, wind, rain, snow. SWP must stand the weather—and it does.