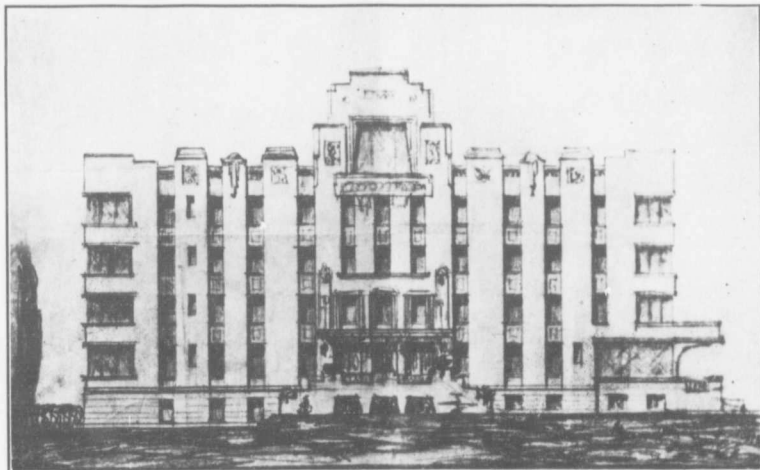


STE. ANNE DE BEAUPRE MOST MODERN HOTEL

FIRE PROOF ELEVATOR ROOMS WITH BATH EUROPEAN PLAN

75 Rooms with running water, hot and cold, throughout the year



Sanatorium Ste. Anne de Beupré Inc.

This new building of concrete steel structure and granite stone walls, situated facing the Basilica, will be opened June 1st, 1930 to accommodate pilgrims or tourists seeking comfort and a first class service.

A part of this building is called The "SANATORIUM" which has been established in view of taking care of invalids and cripples who require nursing or medical attention while visiting the Shrine. (No contagious diseases).

Having access to its Main Entrance from The Basilica's Park where ceremonies performed can be witnessed from the windows and balconies; the Sanatorium has a complete modern Hospital equipment as X-Rays, Electrotherapy, Hydrotherapy, etc. The medical attention is under the direction of Dr. C. R. Fiset, Laval University Graduate, ex-intern at Lariboisière's Hospital, Paris, France.

Completely separated from The Sanatorium, the other part of the building will be used as an Ultra-Modern "HOTEL" with its entrance on Main Street. The luxurious Lobby is overlooking Main Street and Church Park.

In addition to the Telephone in every room and courteous rooms service, the Hotel will give the best à la Carte and Table d'Hôte dining room service. The Terrace and roof garden is commanding a beautiful panorama of Ste. Anne de Beupré, St. Lawrence River and Ile d'Orléans.

A fully modern drug store with Soda Fountain and cold Lunch Counter will be found in the basement of the building with its entrance of the park. This Sanatorium will be for everybody visiting Ste. Anne. "A Home away from Home".

ROOMS, \$2.00 to \$7.00.—RESERVATIONS CAN BE MADE IN ADVANCE ALL YEAR ROUND.

N. B.—Special rates in winter months and winter sports in connection.