

The best putty for exterior work is made from gilder's whiting and dry white lead—equal parts—and a quick-drying oil varnish. If linseed oil is used, add a little litharge to facilitate the drying process. It should be well kneaded.

The Western Loan & Trust Co., Montreal, are installing a new heating system in their building, using the Kingsley water tube boiler installed by Mr. E. A. Wallberg, of that city. David Ogilvy is the architect.

# Don Valley Pressed Bricks



"DON"  
Registered

Acknowledged the Best in the World

IN ALL COLORS

Specified and Used by the Leading Architects in Canada for the most important buildings. Don't use inferior manufactures because they are cheap.

## TAYLOR BROTHERS - 60 Adelaide St. E., Toronto

BRANCH OFFICES —

59 Temple Building, Montreal, Que.  
Victoria Chambers, Ottawa.

**Brick Mantels  
a Specialty**

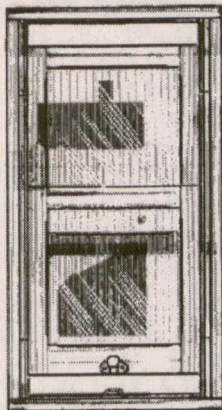
**THE GREAT CHURCH LIGHT**  
**FRINK'S PATENT REFLECTORS**  
AND FIXTURES OF EVERY DESCRIPTION  
FOR LIGHTING CHURCHES, HALLS, PUBLIC BUILDINGS, WITH OIL, OR  
GAS ELECTRICITY  
**FRINK'S PATENT REFLECTORS**  
1 P. FRINK 751 PEARCE ST. N.Y.

## Springer's Folding Partition Fixtures

"JUST AS GOOD."

Yes, an old tale, and yet ever new with some. The statement always disproves itself. If others were just as good, you would never need to be told of it. Send us your address and we will mail folders describing our goods and telling why they are best for you.

O. T. SPRINGER, - Burlington, Ontario



To Architects, Sash Manufacturers, Builders and others.

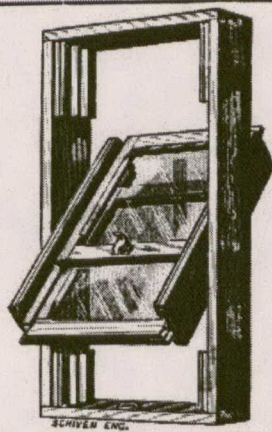
### DUVAL'S WEIGHTLESS REVERSIBLE WINDOW

THESE SASHES

- 1. Need no weights for raising or lowering.
- 2. Remain where placed without supports.
- 3. Can be reversed on pivot, so that the outside can be cleaned as easily as the inside.
- 4. Permit better ventilation than ordinary windows—the whole window space if required, or space at top and bottom, or at the top only.
- 5. Have simple, self-acting mechanism, not liable to get out of order like weights and cords.
- 6. Are safer against burglary.
- 7. Can be made by any sash manufacturer with his existing machinery, and fitted by any ordinary mechanic.
- 8. Are far cheaper than weighted sashes.
- 9. Are little dearer than the ordinary weightless sash.

For Duval's Sashes, or permission to manufacture them, apply to the patentees, where working models may also be seen, or further information obtained. Copy or mill rights will be granted; for terms apply to

**E. DUVAL & CO. (PATENTEES) 403 James St. N. HAMILTON, ONT.**



## Pease "ECONOMY" Heating Apparatus

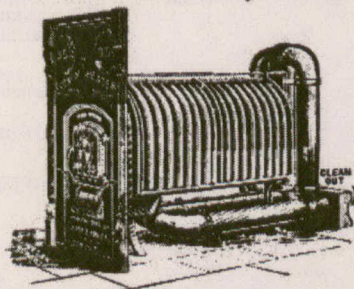
The Heater shown in the accompanying engraving is designed for burning Wood Only. This Furnace is—like all Pease Apparatus—Thoroughly Original in Design. Being entirely different in construction from any other furnace on the market, it naturally has points of Merit that are not embodied in any other Wood Furnace. In Durability and Economy it is a Wonder.

For further information regarding this Heater address the makers:

### J. F. Pease Furnace Co.

(LIMITED)

189-193 Queen St. E. - TORONTO



Please mention the CANADIAN ARCHITECT AND BUILDER when corresponding with Advertisers