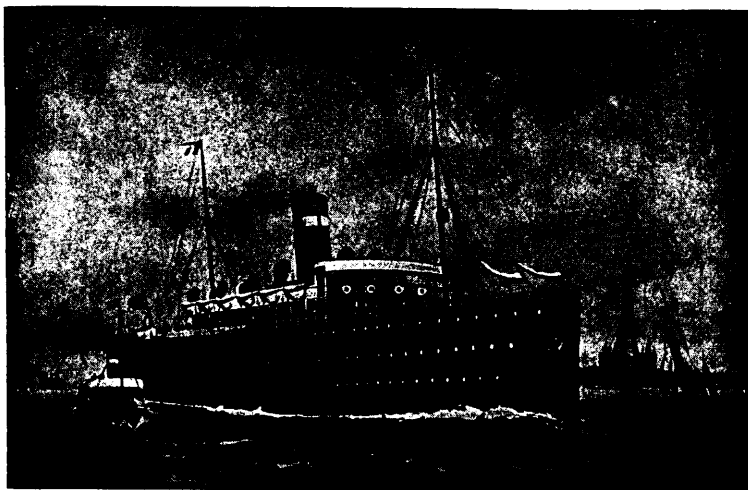


ALLAN LINE

Montreal to Liverpool.



The St. Lawrence Route.

Three Days Smooth Sailing.

Shortest Ocean Passage.

BAVARIAN, - 10,375 Tons	TUNISIAN, - - 10,575 Tons
<small>Twin Screws</small>	<small>Twin Screws</small>
CORINTHIAN, - 8,000 Tons	SICILIAN, - 7,500 Tons
PARISIAN, 5,500 Tons	

These fine new Steamers, or others of the fleet, sail **every Saturday** from Liverpool and from Montreal, calling at Quebec and Londonderry.

The Steamers are amongst the largest and finest in the Transatlantic Lines, and are excelled by none in the accommodation for all classes of passengers. The Saloons and Staterooms are amidships where least motion is felt, and bilge keels have been fitted to all the Steamers which has reduced the rolling motion to the minimum.

Electric Lights are in use throughout the ships, and the cabins have all the comforts of modern first-class hotels.

The hour of sailing is arranged to make connection with trains arriving from the West and South.

Rates of Passage is about 25 per cent. lower than via New York.

For further particulars apply to any Agent of the Company.

H. BOURLIER, 77 Yonge Street, TORONTO
or H. & A. ALLAN, MONTREAL