

SAVE FUEL

BY
COVERING

YOUR

Steam Pipes,
Boilers

AND ALL

Heated Surfaces

WITH -

**MINERAL
WOOL**

Sectional Covering.

-BEST-

Fire proof Non-Conduc-
tor at present known.

EASILY APPLIED.

Asbestos Goods

OF EVERY DESCRIPTION.

**CANADIAN
MINERAL WOOL CO.,
LIMITED.**

**118 BAY STREET,
TORONTO.**

THE ENGLISH CENSUS.

The census of England and Wales for 1891 is only just published. The *London Times* gives a synopsis of the returns, from which we cull the following facts. The population in 1891 was 29,082,585, and the estimate for this year, 1891, was 30,060,000. The total of the United Kingdom was 37,732,922.

An interesting return, which will upset some theories, shows that there has been no depopulation of the rural districts on the whole, though the aggregate increase is not so large as a percentage in rural counties as in others. There are 62 towns in England having over 50,000 inhabitants. The population of London is given as 1,211,743, but by "London" is meant the administrative county of London, which goes wide of what is popularly known as the limits of the city.

The inhabited houses were 5,451,497, which gives 5.32 persons to each dwelling. The males numbered 14,052,991, and females, 14,999,621, the difference being partly accounted for by the number of men and boys absent on military and naval duty, or engaged in the merchant marine service.

A fact of much significance is the very considerable decline in the annual marriage rate in the last ten years. What seems a contradiction is the disparity of numbers between widowers and widows, the former numbering 181,990, the latter 1,121,310. The *Times* explains this to arise from these causes, the life of women being prolonged on an average beyond that of men, and the greater number of widowers who re-marry over those of widows.

Among the oddities of the census are the returns of two women as veterinary surgeons, and 500 as blacksmiths or white-smiths. Those who have seen women nailers know how deft they can be with a heavy hammer manipulating red hot metal. The United Kingdom covers only 121,000 square miles: the Empire, however, includes 11 million square miles, with a population of 372 millions. That is, the Imperial government holds sway over 1,000 square miles of territory abroad for every one it has control over at home, and for every subject in Great Britain the Queen has 10 in her dependencies. -*Insurance Chronicle.*

It costs the U. S. Government \$1,000 a year to vaccinate the Indians.

The Russo-German commercial treaty has been finally signed.

The death rate of the world is 67 a minute, and the birth rate 70 a minute.

Divers now communicate with persons above the water by means of the telephone, the mouth-piece is located near the lips, so that a slight turning of the head brings the mouth close to it.

• W. J. STEIN, •

Chartered Accountant and Auditor,
513 COLUMBIA ST., NEW WESTMINSTER.

-- AND --

P. O. Box C36, VANCOUVER.

ALLICE & AULT,

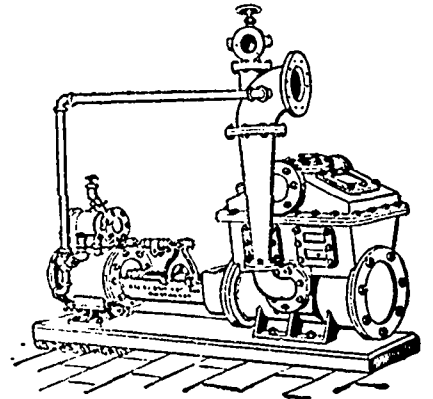
WHOLESALE

Produce and Commission
Merchants.

75 WHARF STREET, VICTORIA.

SOLE AGENTS

Clover Leaf Brand of Cream-
ery Butter which was awarded
the medal and diploma at the
World's Fair, Chicago, 1893.



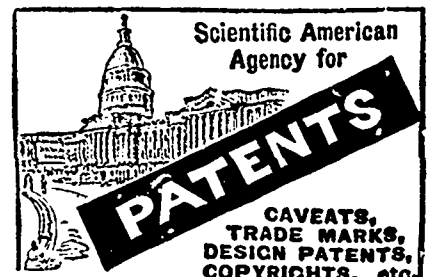
ONE OF OUR

Independent
Condensers
and
Air Pumps
will help
Profits.

NORTHYE M'FG CO., LD.,

TORONTO, ONT.,

FOR PARTICULARS,



For information and free Handbook write to
MUNN & CO., 361 BROADWAY, NEW YORK.
Oldest bureau for securing patents in America.
Every patent taken out by us is brought before
the public by a notice given free of charge in the

Scientific American

Largest circulation of any scientific paper in the
world. Splendidly illustrated. No intelligent
man should be without it. Weekly, \$3.00 a
year; \$1.50 six months. Address MUNN & CO.,
PUBLISHERS, 361 Broadway, New York City.