

**ACTION OF SOMATOSE ON HEALTHY PERSONS.**—

1. Experiment of twelve days' duration on a man, thirty-six years of age, of medium strong build, having a healthy gastro-intestinal canal. During the Somatose period a remarked N surplus occurred on the second day, on the fourth day there was N equilibrium. During the following meat period N surplus also ensued, but not as large as during the administration of Somatose. According to this experiment, Somatose is not only equivalent as regards the nitrogenous surplus to meat, but even somewhat superior.

2. The person experimented on was a moderately vigorous peasant boy, sixteen years old, who had suffered, although only at times, from constipation. Notwithstanding that the patient received in addition to the Somatose, only food whose percentage of nitrogen was at the lower limit of the albuminous requirements of the human body, there was a gain in nitrogen under nutrition with Somatose.

3. If, on the other hand, a person is in an especially good condition of nutrition, and, in contrast to the preceding case, consumes, further, more

nitrogenous substances (albumen), the nutritive value of Somatose is somewhat lower than that of meat, as was shown by a third experiment on the peasant boy mentioned above.

From this experiment it follows, moreover, that even under such conditions the utilization of Somatose may be considerably increased by diminishing the quantity of nitrogenous substances in the additional food. The absorption and assimilation of equal quantities of Somatose is twice as good when the percentage of nitrogenous elements in the additional food supply is reduced than under an albuminous diet.

On the ground of these three experiments on a healthy person, it follows:

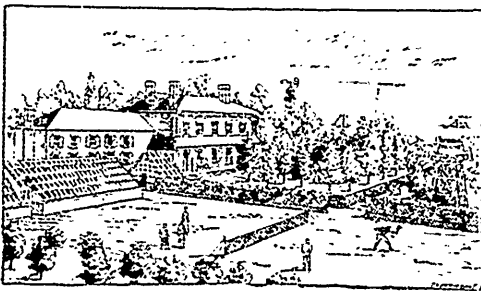
(a) Somatose is well borne, without producing diarrhœa.

(b) The absorption of Somatose N and its excretion in the urine is almost the same as that of N of meat.

(c) The assimilation of the preparation is more perfect if the supplementary food is poor in albumen. Under the use of 4.24 N in form of Somatose there was excreted in the feces, instead of

# LAKEHURST SANITARIUM

## OAKVILLE, ONT.



FOR THE TREATMENT OF

## **INEBRIETY**

(Habitual and Periodical)

**MORPHINE**, and other

**DRUG HABITS** and

**NERVOUS DISEASES**

**PHYSICIANS** generally now concede that these diseases cannot be treated with entire success except under the conditions afforded by some **FIRST CLASS SANITARIUM**. Such an institution should be a valuable auxiliary to the practice of every physician who may have patients suffering from any form of these complaints, who are seeking not relief merely, but entire restoration to health. The treatment at **LAKEHURST SANITARIUM** rarely fails to produce the most gratifying results, being scientific, invigorating, thorough, productive of no after ill effects, and pleasant to the patient. The usual time required to effect a complete cure is four to six weeks.

**LAKEHURST PARK** is a well-wooded expanse of several acres extent, overlooking Lake Ontario, affording the utmost privacy if desired, and the surroundings are of the most picturesque description. The Sanitarium is fully equipped with every necessary appliance for the care, comfort, convenience and recreation of patients. Terms upon application to

**C. A. MCBRIDE, M.D., MEDICAL SUPERINTENDENT,**  
OAKVILLE.