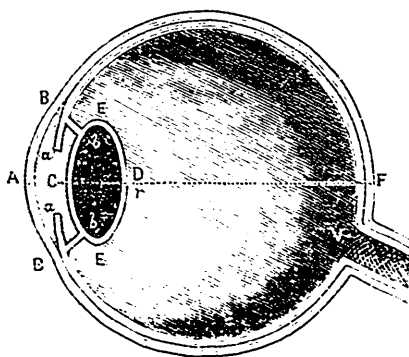


THE GOOD CANADIAN ;

OR,

HOUSEHOLD PHYSICIAN.

Happy the man who by Nature's laws, through known effects can trace the cause.



ANATOMY OF THE EYE.

The outermost coat, which is called the sclerotica, is represented by the space between the two exterior circles, B F B; the more globular part adjoining to the sclerotica at the points B B, represented by the space between the two circles at B A B, is the cornea. The next coat under the sclerotica is a membrane of less firmness, represented by the two innermost circles of B F B, and called the choroides. Adjoining the choroides, at B B, is a flat membrane called the iris; *a a* is the pupil, being a small hole in the iris, a little obliquely inclined to the nose; V, the optic nerve; the fibres of this nerve, after their entrance into the eye, spread themselves over the choroides